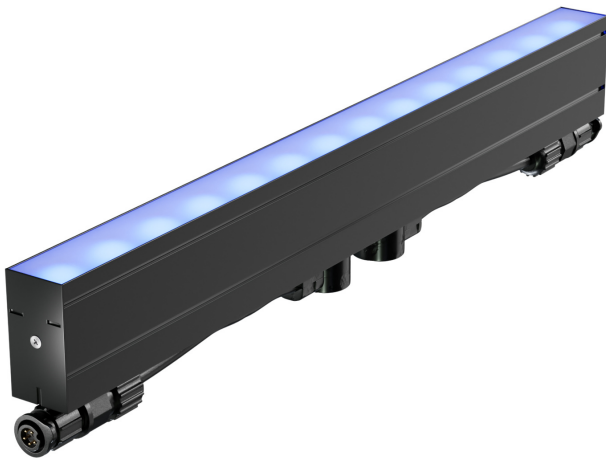


HB1814

EXTERIOR LINEAR LED LIGHTBAR

COMPACT | LOW PROFILE | SPEC GRADE
100/277VAC 4w/ft | 400lm/ft

Cove | Accent | Wall Washing | General Lighting



The Smart Lighting Company HB1814 Series presents an affordable, spec-grade solution for outdoor lighting applications, designed to deliver even, vibrant illumination ideal for cove, accent, wall washing, and general lighting. The HB1814 is one of the smallest fixtures available and is equipped with optics to outperform channel-type LED strips and deliver smooth, even illumination. Despite its compact dimensions of 0.79"H x 1.5" W, the HB1814 does not compromise on performance, thanks to the high-efficiency Nichia bin-sorted LEDs that provide superior light quality using less energy. Installation is straightforward with an integrated 100/277VAC driver and convenient Plug & Play connectors for extended run capabilities. Encased in a durable extruded black powder-coated aluminum housing with removable precision-tooled end caps for continuous lensing, this luminaire is designed to meet the exacting standards of architects and lighting designers, ensuring reliable, efficient lighting.



PERFORMANCE

Output

4w/ft | 400lm/ft

Color Temperatures

22k, 27k, 30k, 35k, 41k, 50k, 65k, R, G, B, A

Beam Angles

30°, 45°, 120°, 30°x60°

LEDs per Foot

14

LED's

Nichia bin-sorted

Color Consistency

2 SCDM

CRI

85 std, 95 optional

ELECTRICAL

Input Voltage

100-277vac

Power Supply

Integral

Control

0-10v dimming

Heat dissipation

Full thermal management system

Connection

Quick connect plug and play system

Projected Lumen Maintenance

>90,000 hours

PHYSICAL

Fixture Length Options

12", 24", 36", 48"

Max Run Length

277ft@277vac, 120ft@120vac

Housing

Anodized extruded aluminum

Lens

Polycarbonate

Fixture Finish (Standard)

Black

Seamless lens connection

Removable end covers

Standard Mounting

Stainless adjustable or flat brackets

Operating Temperature

-40°F to 122°F, (-40°C to 50°C)

ENVIRONMENT AND WARRANTY

IP Rating

IP66

Environment

Dry, Damp or Wet locations
0-100% non condensing humidity

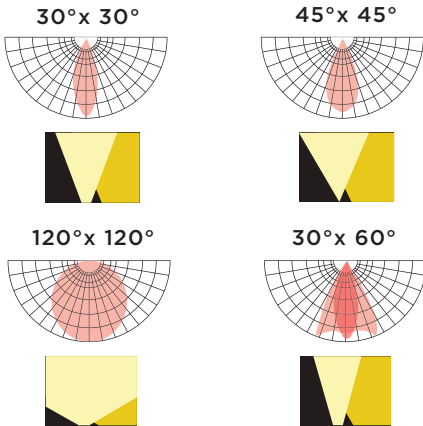
Certifications

UL, cUL

Warranty

5 year limited warranty

OPTICS



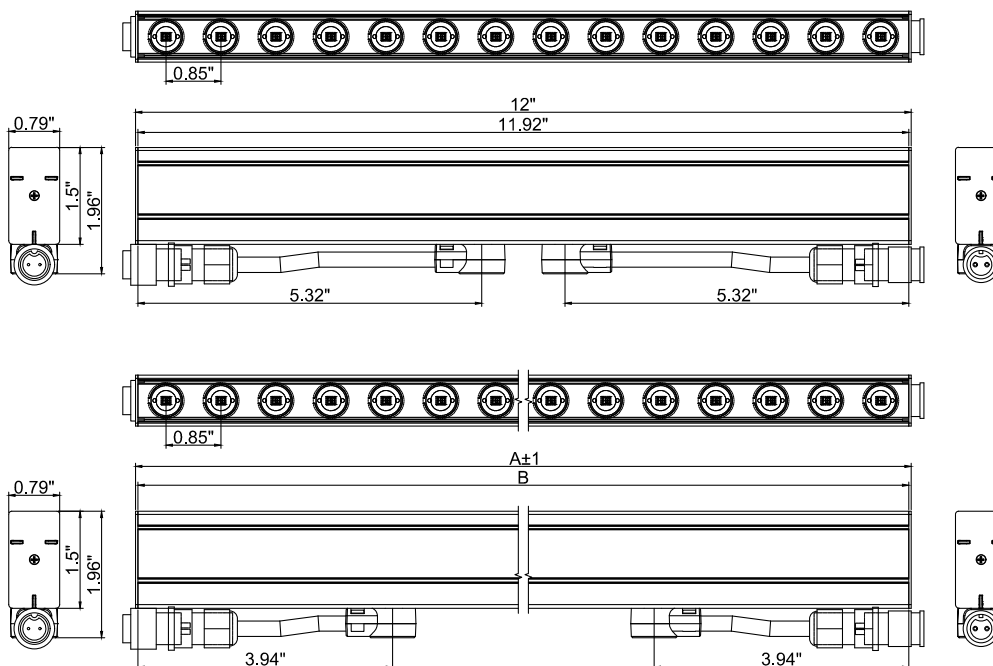
COLOR TEMPERATURES



DIMENSIONS AND DATA

4w/ft	Voltage	View Angle	Watts/ Fixture	Lumens/ Fixture	LEDs/ Fixture	Extrusion Length	Total Length
HB1814-12-XXK-XXD-ACD	100-277VAC	30°, 45° 120° 30°x60°	4w	400	14	L=302.8mm	L=304.8mm (12")
HB1814-24-XXK-XXD-ACD			8w	800	28	L=607.6mm	L=609.6mm (24")
HB1814-36-XXK-XXD-ACD			12w	1200	42	L=912.4mm	L=914.4mm (36")
HB1814-48-XXK-XXD-ACD			16w	1600	56	L=1217.2mm	L=1219.2mm (48")

PROFILE



CREATE YOUR FIXTURE

Ex. HB1814-48-30K-3060-ACD

MODEL	LENGTH	COLOR	OPTICS
HB1814	12" 12 inches 24" 24 inches 36" 36 inches 48" 48 inches	22k 2200k R Red 27k 2700k G Green 30k 3000k B Blue 35k 3500k A Amber 41k 4100k 50k 5000k 65k 6500k	30 30"x30" 3060 30"x60" 45 45"x45" 120 120"x120"
VOLTAGE	CONTROL		
AC 100-277vac	D 0-10v Dimming ND Non Dimming		

SELECT CONNECTION

Wire Lead

QTY	POWER/SIGNAL	
	AL-HB5P-72"-W/L	72" (6ft) Wire lead 5pin
	AL-HB5P-xx"-W/L	xx" (CU) Wire lead 5pin
QTY	POWER	
	AL-HB3P-72"-W/L	72" (6ft) Wire lead 3pin
	AL-HB3P-xx"-W/L	xx" (CU) Wire lead 3pin

* 1 wire lead required for each run.

End Cap

QTY		
	AL-HB3P-ENDCAP	End cap for fixture output at end of run

* 1 End cap required at the end of each run.

Jumper Cable

QTY	POWER/SIGNAL	
	AL-HB5P-12"-J	12" (1ft) jumper 5pin
	AL-HB5P-72"-J	72" (6ft) jumper 5pin
	AL-HB5P-xx"-J	xx" (CU) jumper 5pin
QTY	POWER	
	AL-HB3P-12"-J	12" (1ft) jumper 3pin
	AL-HB3P-72"-J	72" (6ft) jumper 3pin
	AL-HB3P-xx"-J	xx" (CU) jumper 3pin

* Fixtures are end to end connected.
Use jumpers if space is needed between fixtures.

SELECT MOUNTING

QTY	MOUNTING BRACKETS - 2 PER FIXTURE	
	AL-HB18-ADJ BRACKET	HB18 Adjustable bracket
	AL-HB18-FLAT BRACKET	HB18 Flat bracket

ADDITIONAL OPTIONS

0-10V Dimmer

QTY		
	LUT-DVSTV-WH	Wall switch with 0-10v dimming

Surge Protection

QTY		
	LSP4-UNV	120/277v surge protector

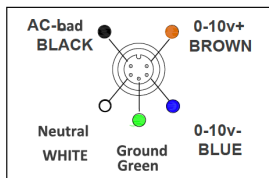
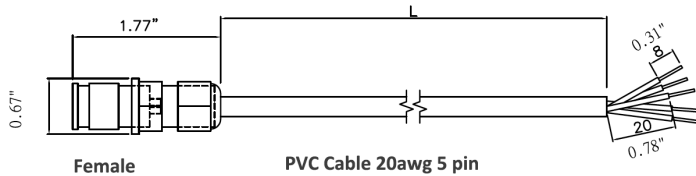
WIRE LEAD

DESCRIPTION

5 pin power / signal wire

PART NUMBER

AL-HB5P-xx"-W/L

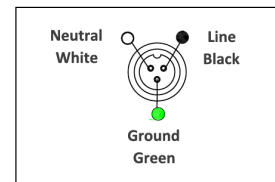
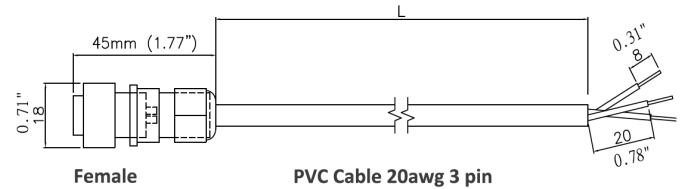


DESCRIPTION

3 pin power wire

PART NUMBER

AL-HB3P-xx"-W/L



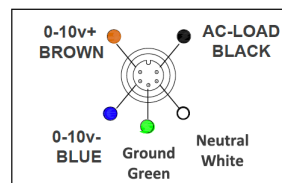
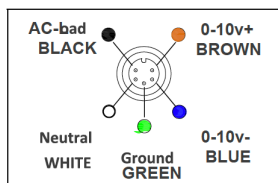
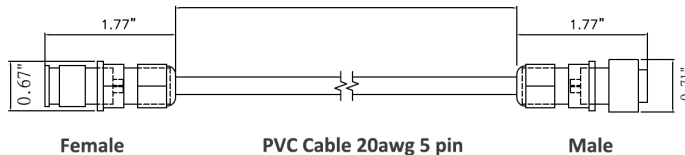
JUMPER CABLE

DESCRIPTION

5 pin power / signal jumper

PART NUMBER

AL-HB5P-xx"-W/L

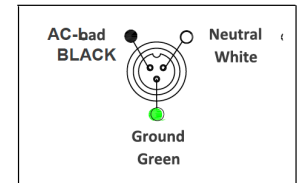
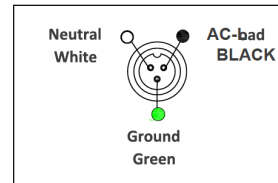
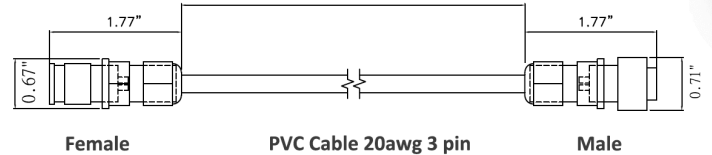


DESCRIPTION

3 pin power jumper

PART NUMBER

AL-HB3P-xx"- J



MOUNTING BRACKETS

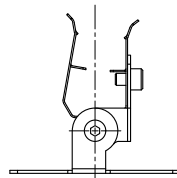
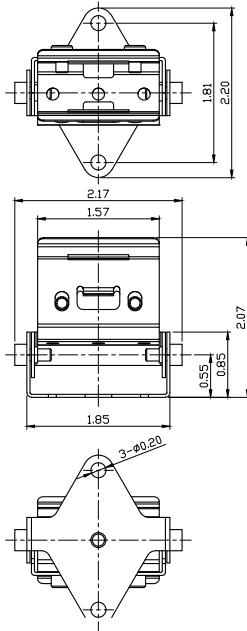
ADJUSTABLE BRACKETS

DESCRIPTION

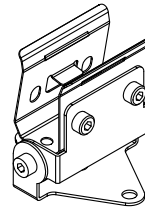
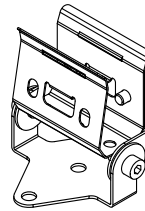
HB18 Adjustable Bracket

PART NUMBER

AL-HB18 ADJ.Bracket



Surface treatment: Black coating
/ Grey coating



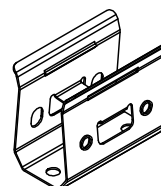
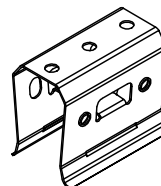
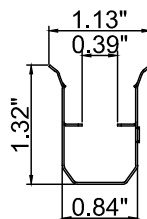
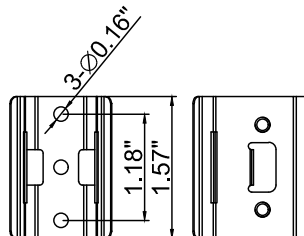
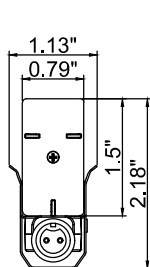
FLAT BRACKETS

DESCRIPTION

HB18 Flat Bracket

PART NUMBER

AL-HB18-Flat Bracket



Clip

SURGE PROTECTION DEVICE

SURGE PROTECTION

DESCRIPTION

Surge Protection Device

PART NUMBER

AL-LSP-UNV

The use of a surge protection device is necessary to maintain your warranty. Specifications are subject to change without notice.

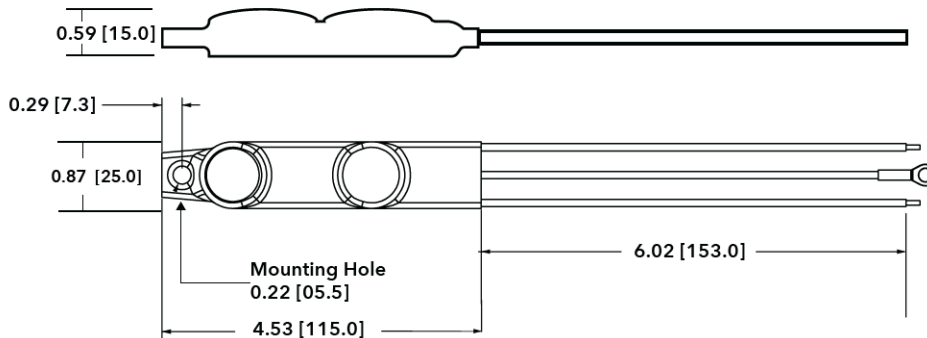
SPECIFICATIONS

Input Voltage	120-277V (+/- 5%)		
Frequency	50Hz-60Hz		
Maximum Continuous Voltage	320V		
Maximum Discharge Current	L-N 20kA; L-G, N-G 10kA (8/20Qs standard wave)		
Nominal Discharge Current	5kA		
Measured Limiting Voltage (VpK)	L-N	L-G	N-G
	1200	1320	1320
Max Case Temperature	85°C		

PULSE RATING (8 X 20 SEC)		
Surge Level	# of Strikes	
	L-N	L-G, N-G
10,000A	*2	1
6,500A	4	2
5,000A	30	15
2,000A	200	100
700A	20000	1000

*1 strike at 20,000A

MECHANICAL DIMENSIONS : IN (MM)



WIRING DIAGRAM

