



HB1856 RGBW

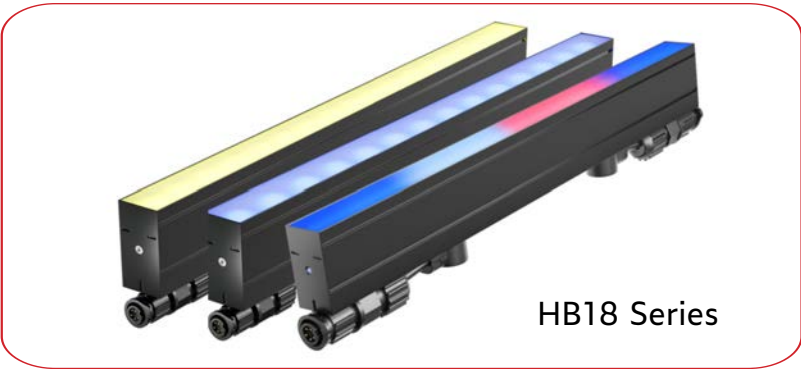
EXTERIOR LINEAR LED LIGHTBAR

COMPACT | LOW PROFILE | SPEC GRADE
 4w/ft | 180lm/ft

Cove | Accent | Wall Washing | Edge | Border |
 General Lighting



Experience dynamic lighting with The Smart Lighting Company HB1856 RGBW Series, a versatile LED linear fixture where exceptional performance meets cost efficiency. This DMX controlled, RGBW color-changing luminaire offers an ultra-low-profile design at only 0.79"H x 1.5" W, making it ideal for wall washing, accent, cove, edge, border, and general illumination applications. Engineered with a universal 100/277VAC internal driver and high-quality Nichia bin-sorted LEDs, it delivers vibrant, consistent lighting that meets the rigorous standards of architects and lighting designers. The HB1856 RGBW is not only energy-efficient, producing more light with less power, but it's also durably constructed with a powder-coated black aluminum housing and removable end plates for continuous lensing. Its Plug and Play connectors ensure an IP66 rated connection, simplifying installation without compromising on quality or durability, embodying our promise of affordability and excellence in architectural lighting.



SPECIFICATIONS

PERFORMANCE

Output

4w/ft | 110lm/ft

Color Temperatures

RGBW

Beam Angles

120°

LEDs per Foot

56

LED's

Nichia bin-sorted

Color Consistency

2 SCDM

ELECTRICAL

Input Voltage

100-277vac

Power Supply

Integral

Control

DMX

Resolution

Per 6" or per fixture

Heat dissipation

Full thermal management system

Connection

Quick connect plug and play system

Projected Lumen Maintenance

>90,000 hours

PHYSICAL

Fixture Length Options

12", 24", 36", 48"

Max Run Length

277ft@277vac, 120ft@120vac

Housing

Anodized extruded aluminum

Lens

Polycarbonate diffused

Fixture Finish (Standard)

Black

Seamless Lens Connection

Removable end covers

Standard Mounting

Stainless adjustable or flat brackets

Operating Temperature

-40°F to 122°F, (-40°C to 50°C)

ENVIRONMENT AND WARRANTY

IP Rating

IP66

Environment

Dry, Damp or Wet locations
0-100% non condensing humidity

Certifications

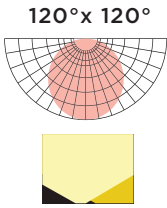
UL, cUL

Warranty

5 year limited warranty

SPECIFICATIONS

OPTICS



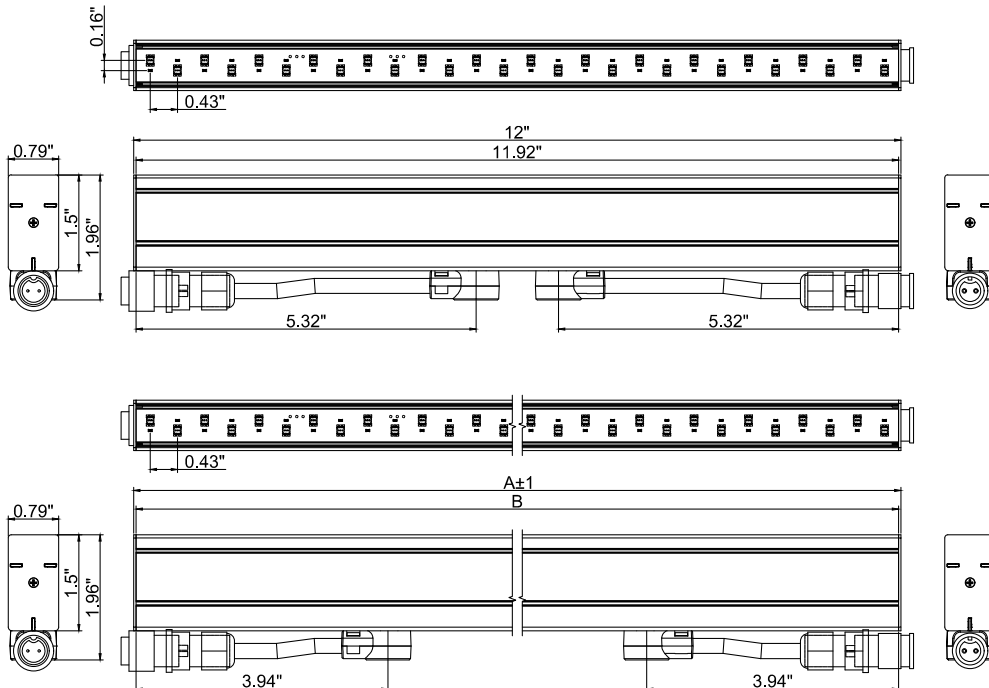
COLOR TEMPERATURES



DIMENSIONS AND DATA

4w/ft	Voltage	View Angle	Watts/Fixture	Lumens/Fixture	LEDs/Fixture	Extrusion Length	Total Length
HB1856-12-RGBW-XXD-DX	100-277VAC	120°	4w	180	28(RGB)+28W	L=302.8mm	L=304.8mm (12")
HB1856-24-RGBW-XXD-DX			8w	360	56(RGB)+56W	L=607.6mm	L=609.6mm (24")
HB1856-36-RGBW-XXD-DX			12w	540	84(RGB)+84W	L=912.4mm	L=914.4mm (36")
HB1856-48-RGBW-XXD-DX			16w	720	112(RGB)+112W	L=1217.2mm	L=1219.2mm (48")

PROFILE



ORDER FORM

CREATE YOUR FIXTURE

Ex. HB1856-48-RGBW65-120AC-DM

MODEL HB1856	LENGTH 12" 12 inches 24" 24 inches 36" 36 inches 48" 48 inches	COLOR RGBW 27k 2700k Select the W 30k 3000k 65k is 35k 3500k standard 41k 4100k 50k 5000k 65k 6500k	OPTICS 120 120"x120"
VOLTAGE AC 100-277vac	CONTROL DM Addressable/6" DS Addressable/fixture		

SELECT CONNECTION

Wire Lead

QTY	POWER/SIGNAL	
	AL-HB5P-72"-W/L	72" (6ft) Wire lead 5pin
	AL-HB5P-xx"-W/L	xx" (CU) Wire lead 5pin
QTY	POWER	
	AL-HB3P-72"-W/L	72" (6ft) Wire lead 3pin
	AL-HB3P-xx"-W/L	xx" (CU) Wire lead 3pin

* 1 wire lead required for each run.

End Cap

QTY	AL-HB3P-ENDCAP	End cap for fixture output at end of run
-----	----------------	--

* 1 End cap required at the end of each run.

Jumper Cable

QTY	POWER/SIGNAL	
	AL-HB5P-12"-J	12" (1ft) jumper 5pin
	AL-HB5P-72"-J	72" (6ft) jumper 5pin
	AL-HB5P-xx"-J	xx" (CU) jumper 5pin
QTY	POWER	
	AL-HB3P-12"-J	12" (1ft) jumper 3pin
	AL-HB3P-72"-J	72" (6ft) jumper 3pin
	AL-HB3P-xx"-J	xx" (CU) jumper 3pin

* Fixtures are end to end connected. Use jumpers if space is needed between fixtures.

ADDITIONAL OPTIONS

DMX Controller

QTY	NIC-DMX-STICK-DE3	DMX Controller
-----	-------------------	----------------

Surge Protection

QTY	LSP4-UNV	120/277v surge protector
-----	----------	--------------------------

Junction Boxes

QTY	AC5A-DMX-3WB1	Power and CAT5 signal splitter
	AC5A-DMX-3WB2	AC Power amplifier for long run lengths
	AC5A-DMX-3WB3	Power and Wire lead signal splitter

* Used in place of wire leads to separate power and signal

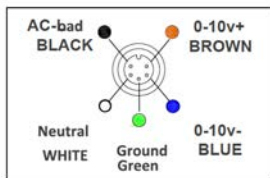
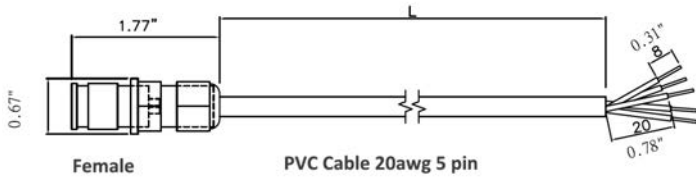
SELECT MOUNTING

QTY	MOUNTING BRACKETS - 2 PER FIXTURE	
	AL-HB18-ADJ BRACKET	HB18 Adjustable bracket
	AL-HB18-FLAT BRACKET	HB18 Flat bracket

WIRING OPTIONS

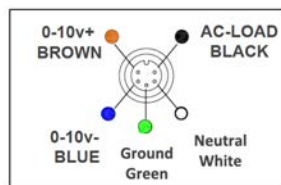
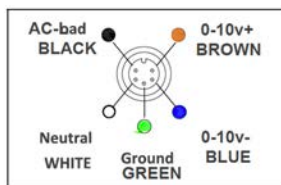
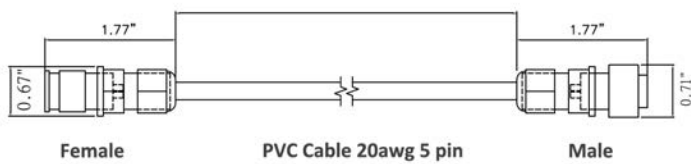
WIRE LEAD

DESCRIPTION 5 pin power / signal wire	PART NUMBER AL-HB5P-xx"-W/L
---	---------------------------------------



JUMPER CABLE

DESCRIPTION 5 pin power / signal jumper	PART NUMBER AL-HB5P-xx"-W/L
---	---------------------------------------



JUNCTION BOX - POWER AND DIMMING SIGNAL SPLITTER

JUNCTION BOX

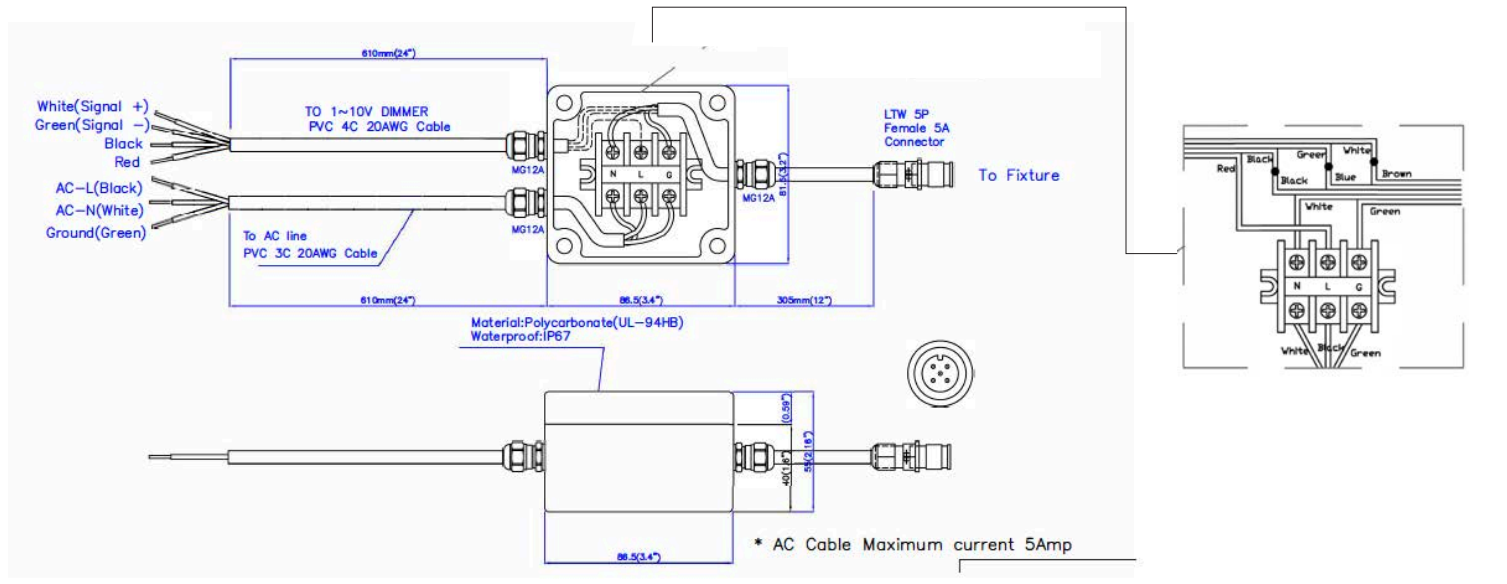
AC5A-DIM-3WB1

INPUT

24" PVC 4C Cable to 0-10v dimmer
24" PVC Cable (3 leads) for AC Power

OUTPUT

12" Cable w 5P Female 5A Connector



JUNCTION BOX-AC POWER AMPLIFIER FOR LONG RUN LENGTHS

JUNCTION BOX

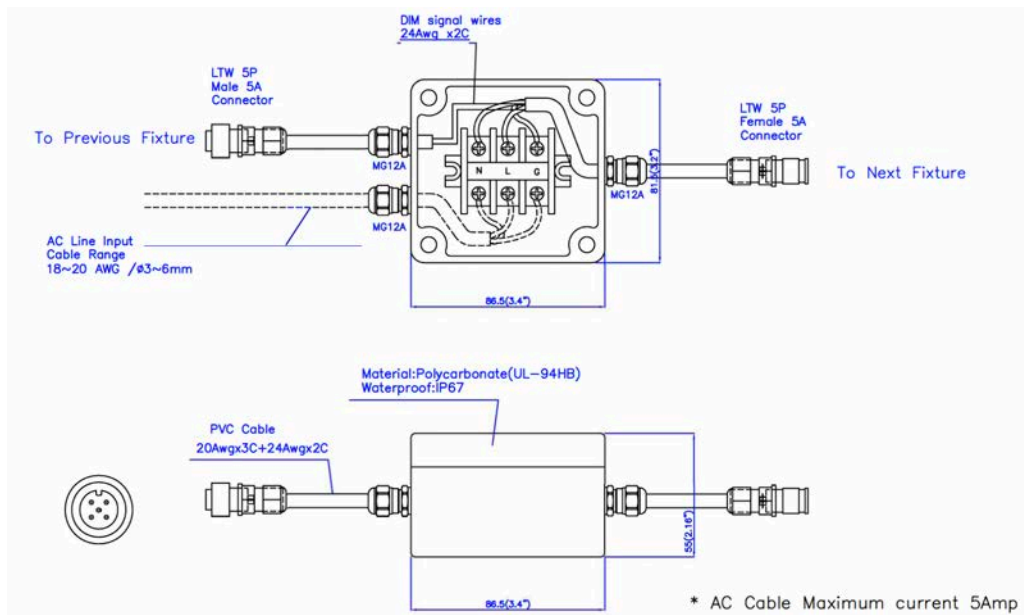
AC5A-DIM-3WB2

INPUT

12" PVC Cable w/ 5P Male 5A Connector

OUTPUT

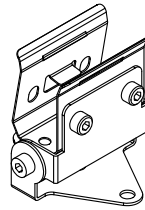
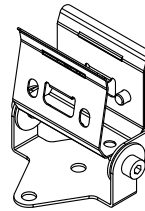
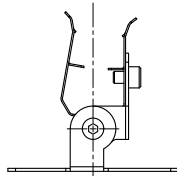
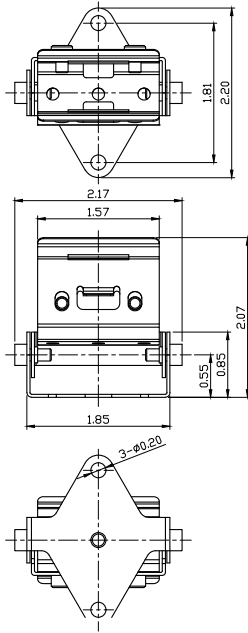
12" PVC Cable w/ 5P Female 5A Connector



MOUNTING BRACKETS

ADJUSTABLE BRACKETS

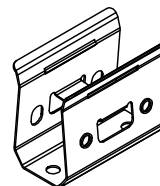
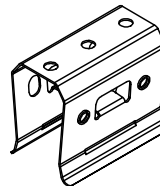
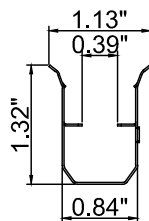
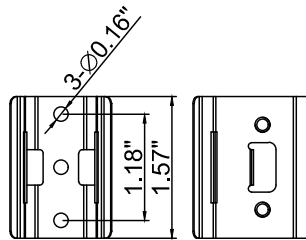
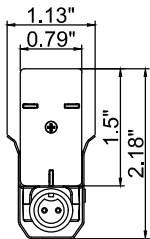
DESCRIPTION	PART NUMBER
HB18 Adjustable Bracket	AL-HB18 ADJ.Bracket



Surface treatment: Black coating / Grey coating

FLAT BRACKETS

DESCRIPTION	PART NUMBER
HB18 Flat Bracket	AL-HB18-Flat Bracket



Clip

SURGE PROTECTION DEVICE

SURGE PROTECTION

DESCRIPTION | **PART NUMBER** | The use of a surge protection device is necessary to maintain your warranty. Specifications are subject to change without notice.

Surge Protection Device | AL-LSP-UNV

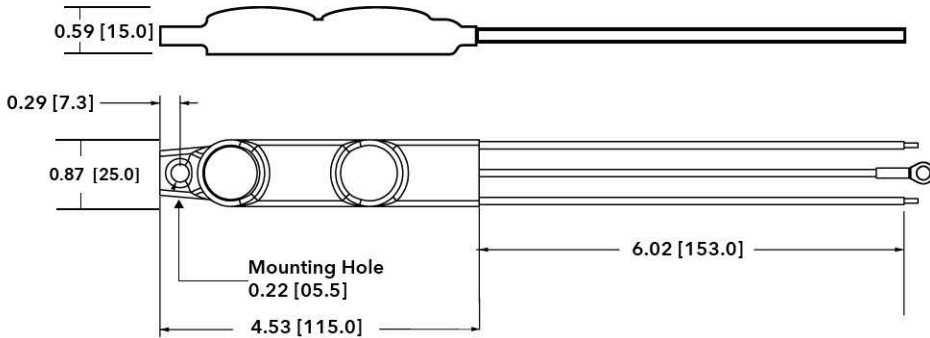
SPECIFICATIONS

Input Voltage	120-277V (+/- 5%)		
Frequency	50Hz-60Hz		
Maximum Continuous Voltage	320V		
Maximum Discharge Current	L-N 20kA; L-G, N-G 10kA (8/20Qs standard wave)		
Nominal Discharge Current	5kA		
Measured Limiting Voltage (VpK)	L-N	L-G	N-G
	1200	1320	1320
Max Case Temperature	85°C		

PULSE RATING (8 X 20 SEC)		
Surge Level	# of Strikes	
	L-N	L-G, N-G
10,000A	*2	1
6,500A	4	2
5,000A	30	15
2,000A	200	100
700A	20000	1000

*1 strike at 20,000A

MECHANICAL DIMENSIONS : IN (MM)



WIRING DIAGRAM

