

# HB3014

## EXTERIOR LINEAR LED LIGHTBAR

Designed for Low Profile Illumination

24vdc – 7w/ft, 480lm/ft



### APPLICATION

An outdoor, low-profile architectural spec-grade luminaire designed for linear illumination of narrow coves, walls and surfaces.

Nichia Bin sorted LEDs produce high quality illumination sought after by architects and lighting designers. Precise optical lenses for grazing, washing and general illumination are designed to produce more light using less power to achieve the desired effect. Fixtures are constructed in an extruded anodized aluminum housing with tooled end caps.

### FEATURES

- UL Listed
- Certified to CSA Standard; C22.2 No. 9
- Installation friendly IP66 top quality connectors
- Integral Thermal Management system
- Durable anodized aluminum housing
- Optics for Grazing, Washing, Cove or General Illumination
- Bin sorted LEDs – 2 Step MacAdam Ellipse
- Optional Extrusions, Mounting Arms, & Louvers

### WARRANTY

Our fixtures are backed by a 5-year limited warranty.

### PHYSICAL

Housing	Extruded Anodized Aluminum
Fixture Lengths	12", 24", 36", 48"
LEDs per foot	14 LEDs per foot
Optics	15°, 30°, 45°, 120°, 30°x 60°
Lens	Flat Polycarbonate Lens
Connection	Quick connect plug and play
Hardware	Stainless steel flat or adjustable brackets
Environment	IP66 Wet, Damp or Dry Locations
Humidity	0-100% non-condensing humidity

### ELECTRICAL

Fixture Wattage	7w/ft
System Wattage	6.5w/ft
Constant Voltage	24vdc
Driver	External remote driver
Cable	PVC 2C 20 AWG.
Control	0-10v dimming
Run Length	96w (14.75ft)

### PERFORMANCE

Color Options	22k, 27k, 30k, 35k, 41k, 50k, 65k, Red, Green, Blue, Amber
Lumen Output	480lm/ft
Operating Temps	-40°F to 122°F, (-40°C to +50°C)
CRI	85 or 95 CRI
Color Accuracy	2 Step MacAdam Ellipse
Lifetime L70	> 90,000 hours



# HB3014

## EXTERIOR LINEAR LED LIGHTBAR

DATE
FIRM
PROJECT
CONTACT

### PART NUMBER

MODEL	LENGTH	COLOR	OPTICS	VOLTAGE/DIMMING
HB3014	12" 12 inch 24" 24 inch 36" 36 inch 48" 48 inch	22k 2200k 27k 2700k 30k 3000k 35k 3500k 41k 4100k 50k 5000k 65k 6500k	MONO RED Red BLU Blue GRN Green AMB Amber 15 15° beam 30 30° beam 45 45° beam 120 120° beam 3060 30°x60° beam	24v 24VDC dimming

### ACCESSORIES

#### WIRE LEAD

AL-HB2P-72"-W/L	72" (6ft) Wire Lead
AL-HB2P-xx"-W/L	xx" (CU) Wire Lead (custom length – consult factory)

1 wire lead and end cap required for each run.

#### JUMPER CABLES

AL-HB2P-12"-J	12" (1ft) Jumper Cable
AL-HB2P-72"-J	72" (6ft) Jumper Cable
AL-HB2P-xx"-J	xx" (CU) Jumper Cable (custom length – consult factory)

\* All connectors to be hand tightened, do not use tools or this will void the warranty.

#### END CAP

AL-HB3P-END CAP	End Cap
-----------------	---------

#### MOUNTING HARDWARE

AL-HB30 ADJ.BRACKET	HB30 Adjustable Bracket
AL-HB30-FLAT BRACKET	HB30 Flat Bracket

#### 0-10V DIMMER SWITCH

LUT-DVSTV-WH	0-10V Dimmer
--------------	--------------

#### SURGE PROTECTION DEVICE

LSP4-UNV	120/277V Surge Protector
----------	--------------------------

A surge protection device must be installed on each supplying circuit to comply with TSLC's 5-year warranty terms.

#### OPTIONAL FINISHES – Anodized aluminum standard

BK	Black
BZ	Bronze
WH	White
CU	Custom

#### GLARE PROTECTION

HB30-12" LOUVER	12" Louver
HB30-24" LOUVER	24" Louver
HB30-36" LOUVER	36" Louver
HB30-48" LOUVER	48" Louver

Standard louvers are in Black. Louvers are also available in Bronze, White, or custom.

### MOUNTING OPTIONS

#### HOUSING AND EXTENDED ARMS

HB30EXT-XXL-XXF-XXA (L=Length, F=Finish, A= Extended arm length)

QTY	HOUSING LENGTH (L)	FINISH (F)	EXTENDED ARM LENGTH (A)
	HB30EXT-12" (12" housing with extended arms)	Black (BK)	6"
	HB30EXT-24" (24" housing with extended arms)	Bronze (BZ)	12"
	HB30EXT-36" (36" housing with extended arms)	White (WH)	18"
	HB30EXT-48" (48" housing with extended arms)	Custom (CU)	24"
			36"
			GPS

Standard fixture housing is anodized aluminum. Powder coating is available from factory in Black, Bronze, White, or custom. There is a minimum quantity for powder coating or a surcharge will be added. 1ft & 2ft extrusions require one ground post stake (HBEXP-GPS). 3ft & 4ft extrusions require two ground post stakes (HBEXP-GPS).

# HB3014

## EXTERIOR LINEAR LED LIGHTBAR

### POWER SUPPLIES

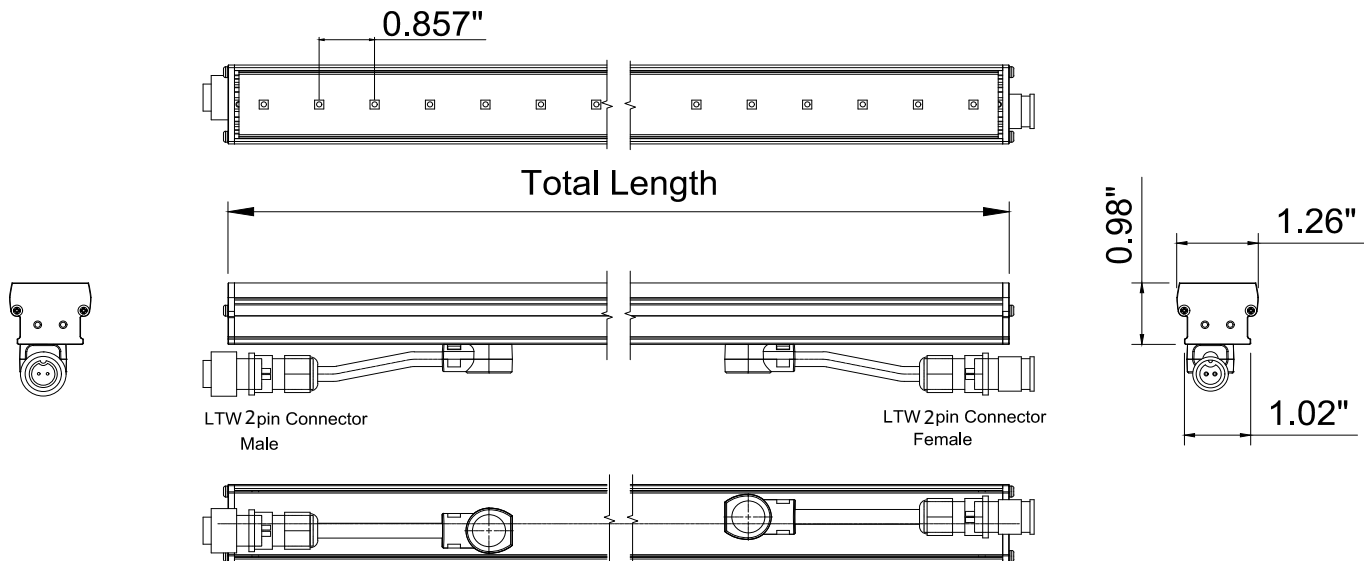
#### POWER SUPPLIES - Constant Voltage

	PS-TSLC-UNV-24v-96WDHV2	24v 96w power supply, 0-10v, ELV, TRIAC dimming, wet location
	PS-TSLC-UNV-24v-60WDHV2	24v 60w power supply, 0-10v, ELV, TRIAC dimming, wet location
	PS-TSLC-UNV-24v-30WDHV2	24v 30w power supply, 0-10v, ELV, TRIAC dimming, wet location
	PS-LV100-24N-UNV1	24v 100w power supply, Non-dimming
	PS-LV80-24N-UNV1	24v 80w power supply, Non-dimming

### DIMENSIONS AND DATA

7w/ft	VOLTAGE	VIEW ANGLE	WATTS/ FIXTURE	LUMENS/ FIXTURE	LEDS/FT	EXTRUSION LENGTH	TOTAL LENGTH
HB3014-12-XXK-XXD-24V	120/270VAC	15°, 30° 45°, 120° 30°x60°	7w	480	14	L=305.9mm	L=306.8mm (12.1")
HB3014-24-XXK-XXD-24V			14w	960	28	L=606.8mm	L=611.8mm (24.1")
HB3014-36-XXK-XXD-24V			21w	1440	42	L=911.4mm	L=916.4mm (36.1")
HB3014-48-XXK-XXD-24V			28w	1920	56	L=1216.2mm	L=1221.2mm (48.1")

### PROFILE

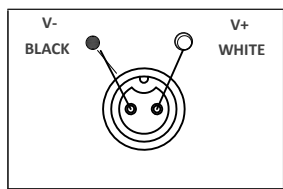
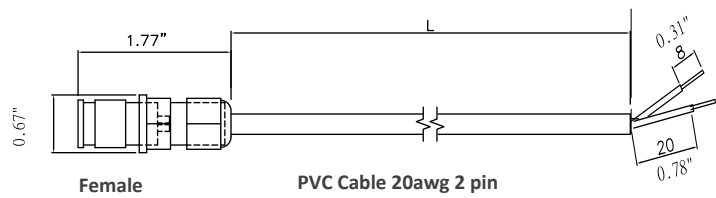


# HB30 Series

## WIRING OPTIONS

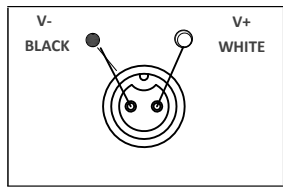
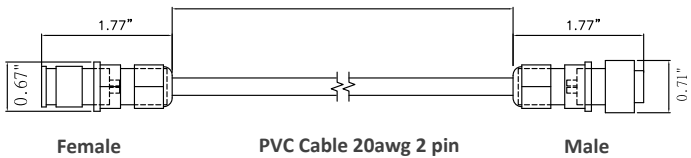
### WIRE LEAD

DESCRIPTION	2 pin wire lead
PART NUMBER	AL-HB2P-xx"-W/L



### JUMPER CABLE

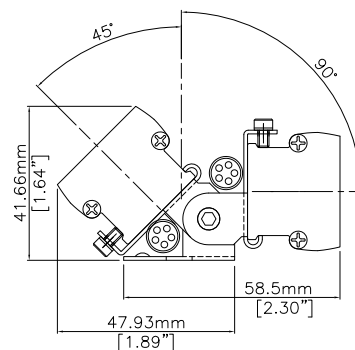
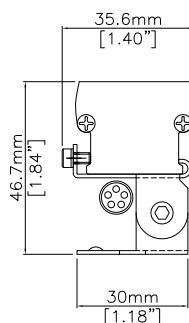
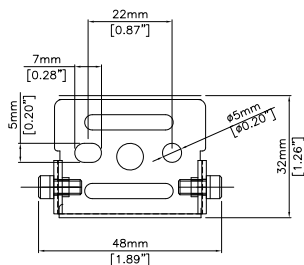
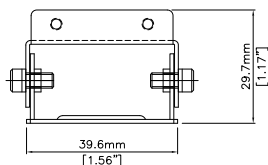
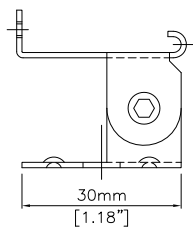
DESCRIPTION	2 pin jumper
PART NUMBER	AL-HB2P-xx"-J



## MOUNTING BRACKETS

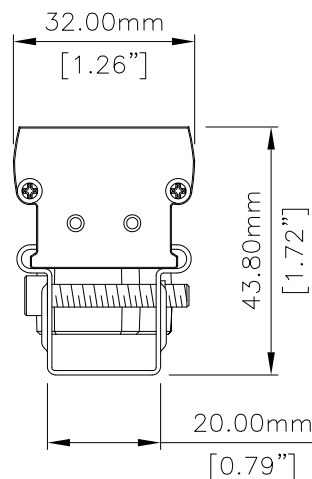
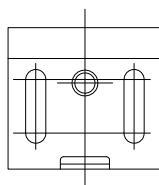
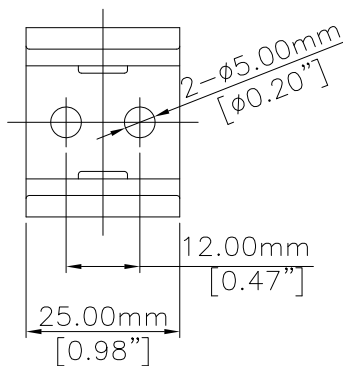
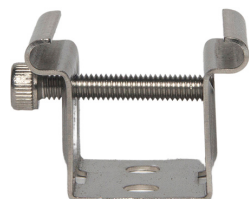
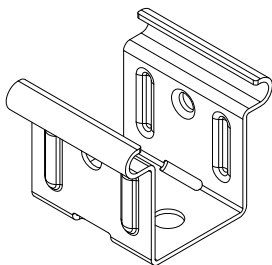
## ADJUSTABLE BRACKETS

<b>DESCRIPTION</b>	HB30 Adjustable Bracket	<b>PART NUMBER</b>	AL-HB30 ADJ.Bracket
--------------------	-------------------------	--------------------	---------------------



## FLAT BRACKETS

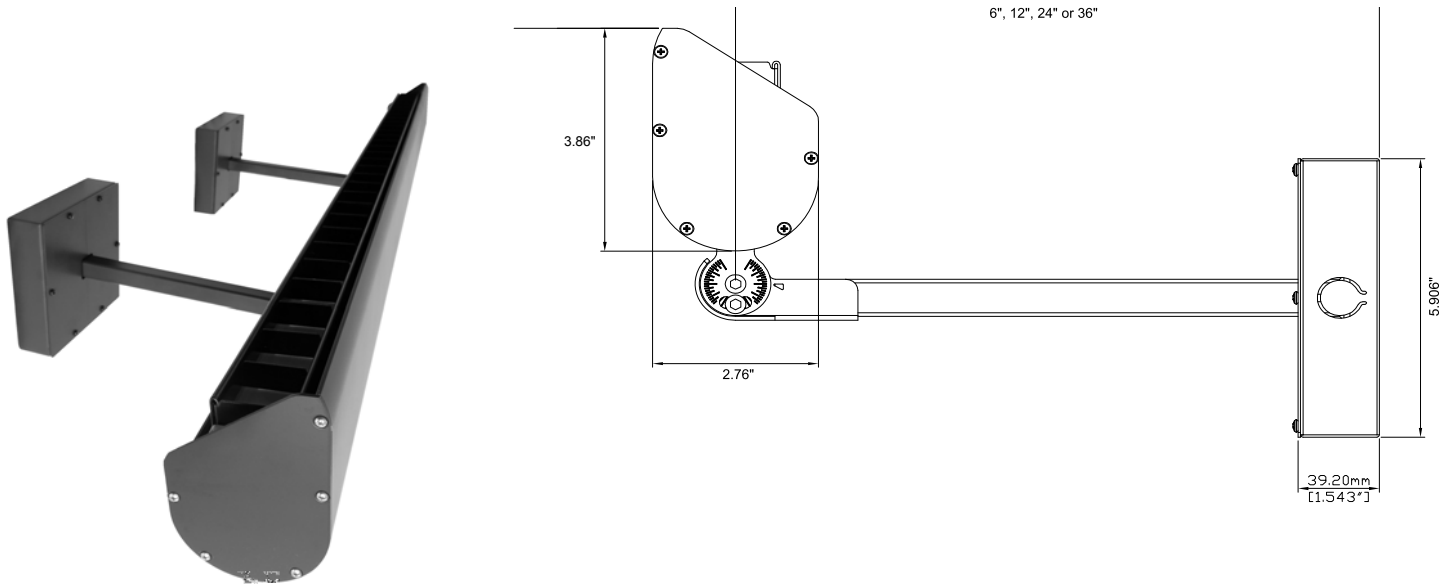
<b>DESCRIPTION</b>	HB30 Flat Bracket	<b>PART NUMBER</b>	AL-HB30-Flat Bracket
--------------------	-------------------	--------------------	----------------------



## MOUNTING ACCESSORIES

## EXTRUSIONS AND EXTENDED ARMS

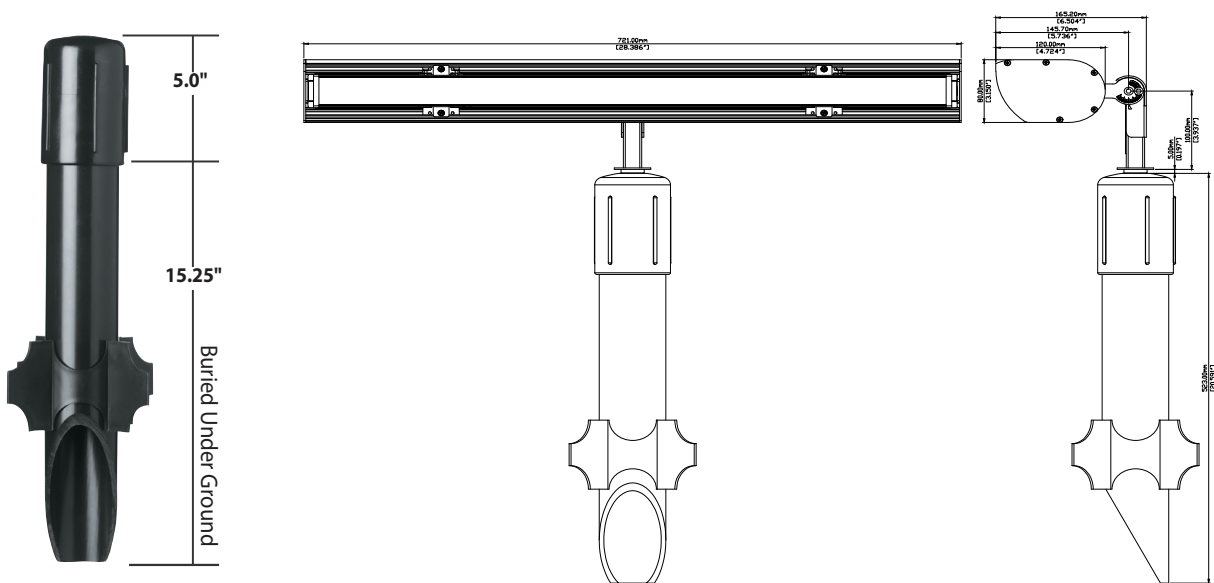
**PART NUMBER** HB30EXT-XXL-XXF-XXA (L=Length, F=Finish, A= Extended Arm Length)



## GROUND POST STAKES

**PART NUMBER** HBEXP-GPS

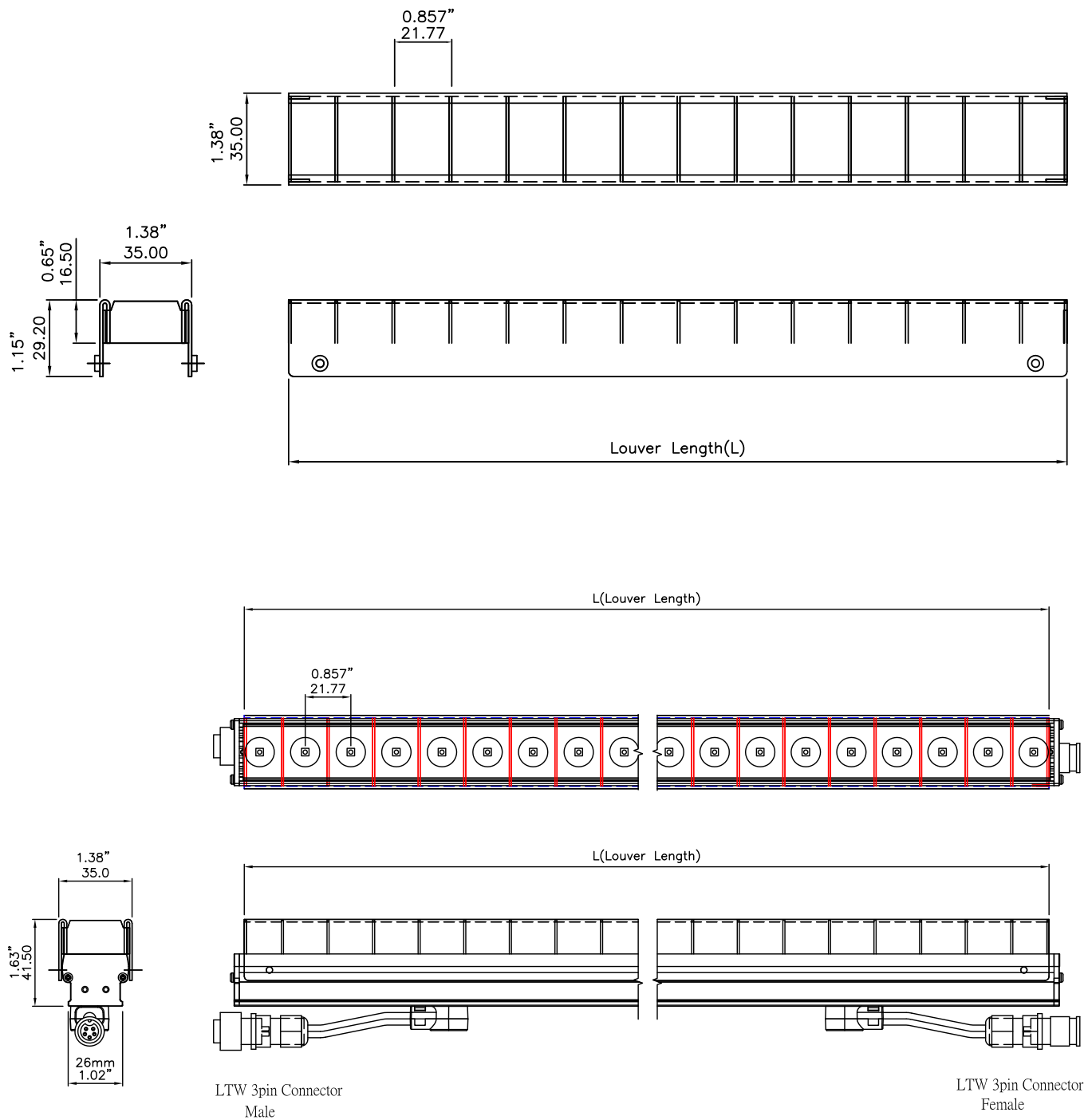
1ft & 2ft extrusions require one HBEXP-GPS. 3ft & 4ft extrusions require two HBEXP-GPS.



# HB30 Series

## GLARE PROTECTION

### LOUVERS



# HB30 Series

## SURGE PROTECTION DEVICE

### SURGE PROTECTION

**DESCRIPTION** Surge Protection Device

**PART NUMBER** AL-LSP-UNV

The use of a surge protector is necessary to maintain your warranty. Specifications are subject to change without notice.

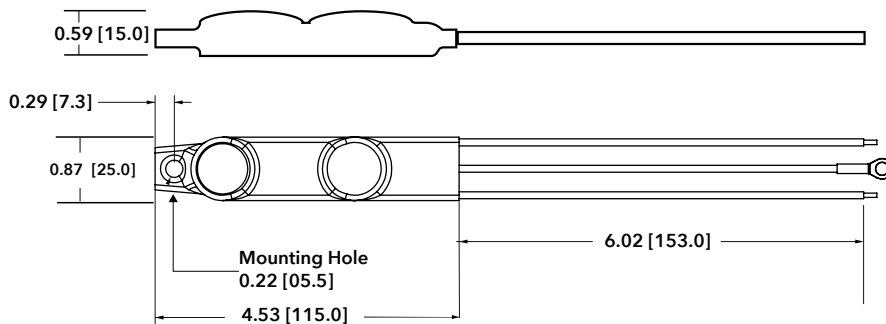
### SPECIFICATIONS

<b>Input Voltage</b>	120-277V (+/- 5%)		
<b>Frequency</b>	50Hz-60Hz		
<b>Maximum Continuous Voltage</b>	320V		
<b>Maximum Discharge Current</b>	L-N 20kA; L-G, N-G 10kA (8/20μs standard wave)		
<b>Nominal Discharge Current</b>	5kA		
<b>Measured Limiting Voltage (VpK)</b>	L-N	L-G	N-G
	1200	1320	1320
<b>Max Case Temperature</b>	85°C		

PULSE RATING (8 X 20 μSEC)		
Surge Level	# of Strikes	
	L-N	L-G, N-G
10,000A	*2	1
6,500A	4	2
5,000A	30	15
2,000A	200	100
700A	2000	1000

\*1 strike at 20,000A

### MECHANICAL DIMENSIONS: IN [MM]



### WIRING DIAGRAM

