



HB50A RGB

HIGH POWER LINEAR LED LIGHTBAR

High Power | High Intensity
20w/ft | 855lm/ft | DMX

Exterior: Graze | Wall Washing | Cove | Façade |
General Lighting



The HB50A RGB is a powerful, high-performance exterior architectural fixture. This color-changing LED linear fixture delivers 20 watts per foot, tailor-made for architectural enhancement, such as wall grazing, washing, cove, façade, and flood illumination. Equipped with Nichia bin-sorted LEDs, and a range of precise optics to fine-tune your lighting effect, it ensures a high-quality, consistent output. Known for its reach and intensity over 60 feet, this fixture is DMX controlled and customizable in terms of length, color temperature, optics, and finishes. The HB50A RGB features a universal 100/277VAC power supply and is self-addressing, offering ease in integration and control. Installation is streamlined with a Plug and Play system, and multiple mounting options, including powder-coated housing with integral glare shields, to accommodate your architectural application.



SPECIFICATIONS

Date: _____

Type: _____

Project: _____

Firm: _____

PERFORMANCE

Output

20w/ft | 855lm/ft

Color Temperatures

RGB

Beam Angles

15°, 20°, 30°, 45°, 60°, 75°, 90°, 120°,
15°x35°, 18°x58° & 30°x60°

LEDs per Foot

18 (6R, 6G, 6B) LEDs/ft.

LED's

Nichia bin-sorted

Color Consistency

2 SCDM

ELECTRICAL

Input Voltage

Universal 100/277VAC

Driver

Integrated Driver

Control

DMX

Resolution

Per 12" or per fixture

Heat dissipation

Full thermal management system

Connection

Quick connect plug and play system
(power and signal in one cable)

Projected Lumen Maintenance

>90,000 hours

PHYSICAL

Fixture Length Options

12", 24", 36", 48"

Max Run Length

110ft@277vac, 48ft@120vac

Housing

Extruded gray aluminum

Lens

Tempered Glass

Fixture Finish (Standard)

Anodized aluminum

Powder Coated Finish (Optional)

Black, Bronze, White, CU

Standard Mounting

Adjustable brackets

Optional Mounting

Powder-coated housing | extended arms or
ground post stakes

Operating Temperature

-40°F to 122°F, (-40°C to +50°C)

ENVIRONMENT AND WARRANTY

IP Rating

IP66

Environment

Dry, Damp or Wet locations
0-100% non-condensing humidity

Certifications

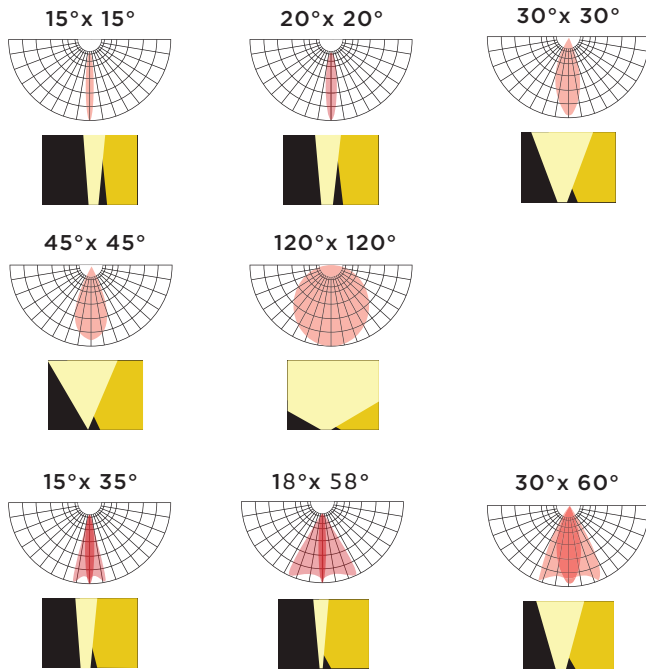
UL, cUL

Warranty

5 year limited warranty

PHYSICAL

OPTICS



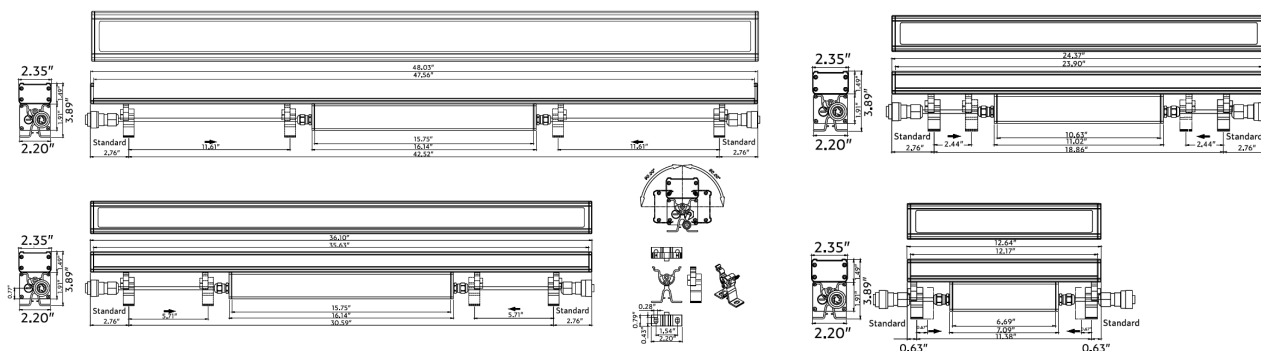
COLOR TEMPERATURES



DIMENSIONS AND DATA

Model Number	Voltage	View Angle	Watts/Fixture	Lumens/Fixture	LEDs Fixture	Extrusion Length	Total Length
HB50A-12"-RGB-XXD-AC-DX	100-277VAC	15°, 20°, 30°, 45°, 60°, 75°, 90°, 120°, 15°x35°, 18°x58°, 30°x60°	20	855lm	6R, 6G, 6B	12.17" (309mm)	12.64" (321mm)
HB50A-24"-RGB-XXD-AC-DX			40	1710lm	12R, 12G, 12B	23.90" (607mm)	24.37" (619mm)
HB50A-36"-RGB-XXD-AC-DX			60	2565lm	18R, 18G, 18B	35.63" (905mm)	36.1" (917mm)
HB50A-48"-RGBXXD-AC-DX			80	3420lm	24R, 24G, 24B	47.56" (1208mm)	48" (1220mm)

PROFILE



HB50A

HIGH POWER LINEAR
LED LIGHTBAR

ORDER FORM

Date: _____

Type: _____

Project: _____

Firm: _____

CREATE YOUR FIXTURE

Ex. HB50A-48-RGB-15-AC-DM

MODEL

HB50A

LENGTH

12" 12 inches
24" 24 inches
36" 36 inches
48" 48 inches

COLOR

RGB RGB

OPTICS

15	15°x15°	1535	15°x35°
20	20°x20°	1858	18°x58°
30	30°x30°	3060	30°x60°
45	45°x45°		
60	60°x60°		
75	75°x75°		
90	90°x90°		
120	120°x120°		

VOLTAGE

AC 100-277vac

CONTROL

DM Addressable/12"
DS Addressable/fixture

SELECT CONNECTION

Wire Lead

QTY POWER/SIGNAL

	HB50-5P-72"-W/L	72" (6ft) Wire Lead
	HB50-5P-xx"- W/L	xx" (CU) Wire Lead (custom length – consult factory)

* 1 wire lead and end cap required for each run.

End Cap

QTY

	HB50-5P-END CAP	End cap
--	-----------------	---------

Jumper Cable

QTY POWER/SIGNAL

	HB50-5P-12"-J	12" (1ft) Jumper Cable
	HB50-5P-72"-J	72" (6ft) Jumper Cable
	HB50-5P-xx"-J	xx" (CU) Jumper Cable (custom length – consult factory)

ADDITIONAL OPTIONS

Optional Powder Coated Finish

QTY Powder coated finishes available for additional cost

	BK	Black
	BZ	Bronze
	WH	White
	CU	Custom

* Fixture housing is anodized aluminum standard

DMX Controller

QTY

	NIC-DMX-STICK-DE3	DMX controller
--	-------------------	----------------

Surge Protection

QTY

	LSP4-UNV	120/277v surge protector
--	----------	--------------------------

Junction Boxes

QTY

	AC8A-DMX-3WB1	Power and CAT5 signal splitter
	AC8A-DMX-3WB2	AC Power amplifier for long run lengths
	AC8A-DMX-3WB3	Power and Wire lead signal splitter

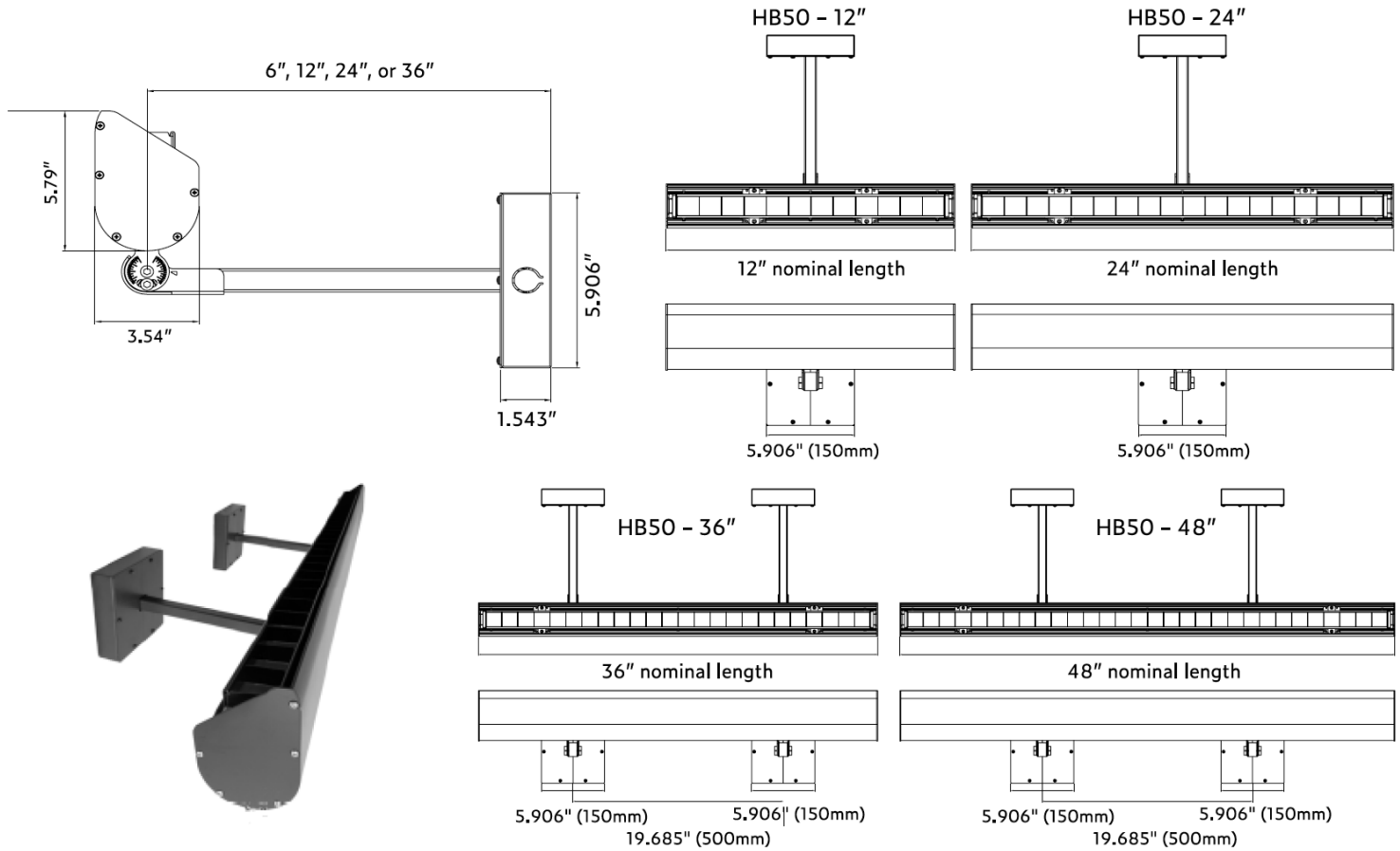
* Used in place of wire leads to separate power and signal

MOUNTING OPTIONS

Housing and Extended Arms

HB50EXT-XXL-XXF-XXA (L=Length, F=Finish, A= Extended arm length)

QTY	Housing	(L) Housing Length	(F) Finish	(A) Extended Arm Length
	HB50EXT-	12"	BK - Black	6"
		24"	BZ- Bronze	12"
		36"	WH - White	18"
		48"	SI - Silver	24"
			CU - Custom	36"
				GPA (Ground Post Arm)



* Standard fixture housing is anodized aluminum. Powder coating is available from factory in Black, Bronze, Silver, White, or custom.

* There is a minimum quantity for powder coating or a surcharge will be added. Custom colors available upon request and will require a cost adder.

* 1ft & 2ft extrusions require one ground post stake (HBEXP-GPS). 3ft & 4ft extrusions require two ground post stakes (HBEXP-GPS).

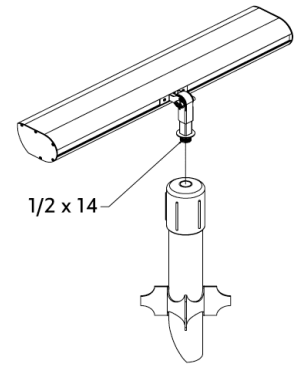
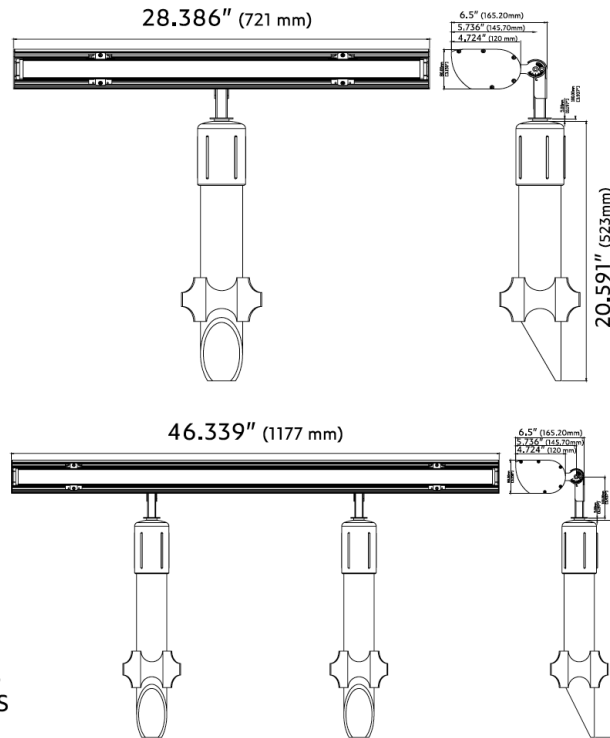
Ground Posts Stakes

QTY **Select when using GPA above (1 per fixture for 12" & 24" housing and 2 for 36" & 48" housing)**
 HBEXT-GPS Ground post mount

1ft & 2ft extrusions require one HBEXT-GPS. 3ft & 4ft extrusions require two HBEXT-GPS.



- * 12" & 24" extrusions require one HBEXT-GPS
- * 36" & 48" extrusions require two HBEXT-GPS

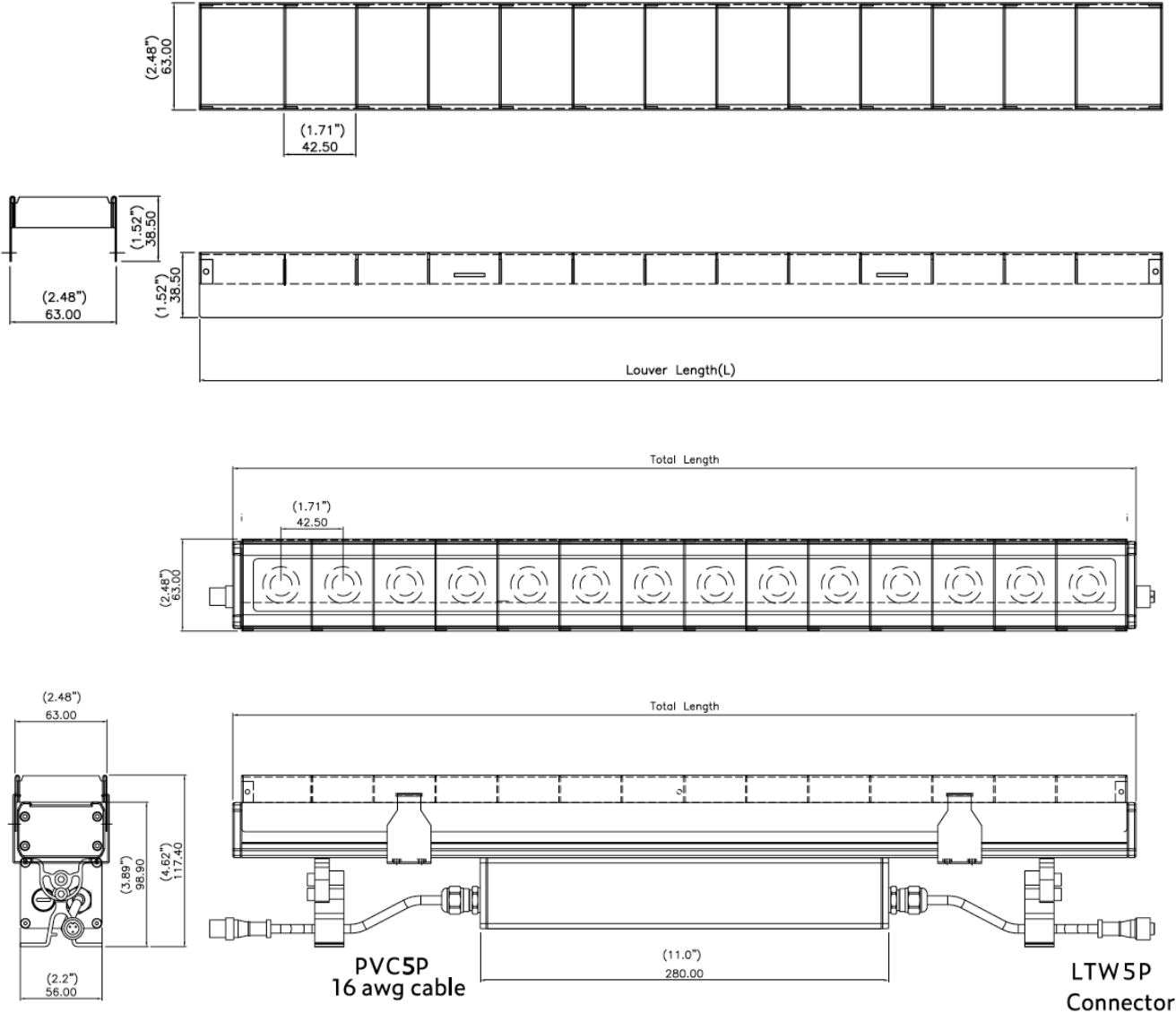


LOUVERS

Glare Protection

Standard louvers are in Black. Louvers are also available in Bronze, White, or custom.

QTY	Housing	Standard Inch	LEDs/unit	LEDs/Pitch	Louver Length	Total Length	(F) Finish
	HB50-12" LOUVER	12"	6	42.5 mm/1.71 in	309 mm/12.2 in	321 mm/12.6 in	BK - Black
	HB50-24" LOUVER	24"	12	42.5 mm/1.71 in	607 mm/23.9 in	619 mm/24.4 in	BZ- Bronze
	HB50-36" LOUVER	36"	18	42.5 mm/1.71 in	905 mm/35.6 in	917 mm/36.1 in	WH - White
	HB50-48" LOUVER	48"	24	42.5 mm/1.71 in	1208 mm/47.6 in	1220 mm/48 in	SI - Silver
							CU - Custom



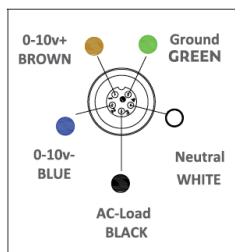
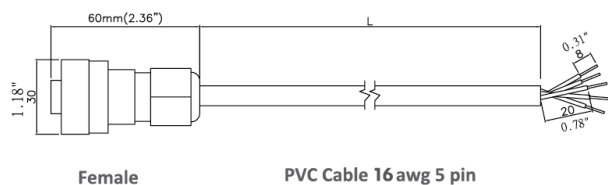
WIRE LEAD

DESCRIPTION

5 pin Power/Signal

PART NUMBER

HB50-5P-xx" 16W/L



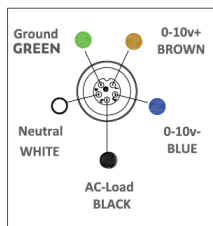
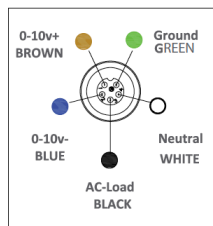
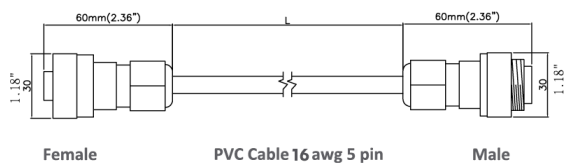
JUMPER CABLE

DESCRIPTION

5 pin Power/Signal

PART NUMBER

HB50-5P-xx" 16J



POWER/SIGNAL

DISTRIBUTION BOXES

Date:

Type:

Project:

Firm:

JUNCTION BOX - POWER AND CAT5 SIGNAL SPLITTER

JUNCTION BOX

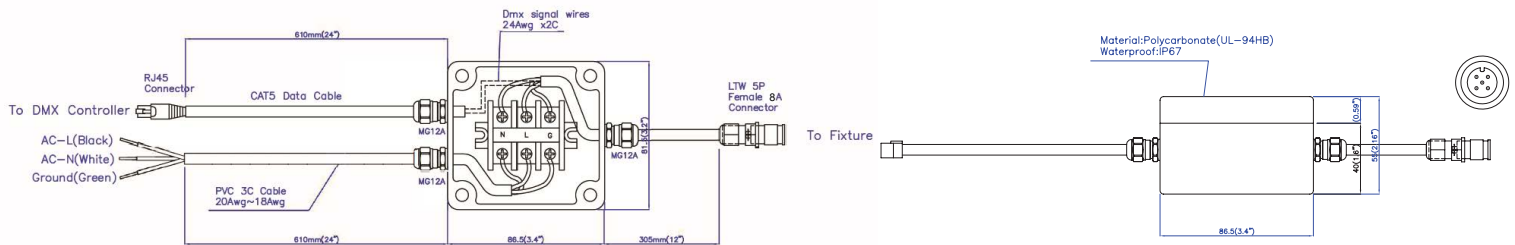
AC8A-DMX-3WB1

INPUT

24" PVC Cat5 Cable for DMX Data
24" PVC Cable (3 leads) for AC Power

OUTPUT

12" Cable w/5P 16g Female 8A Connector



JUNCTION BOX-AC POWER AMPLIFIER FOR LONG RUN LENGTHS

JUNCTION BOX

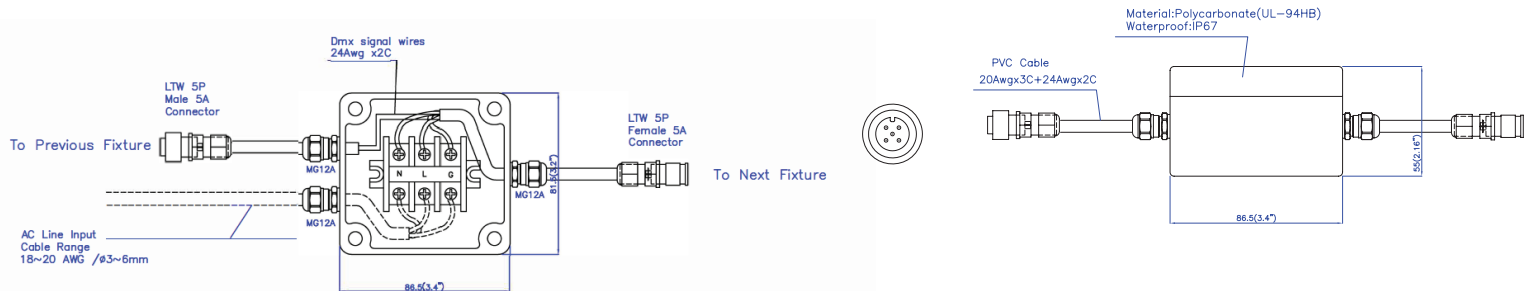
AC8A-DMX-3WB2

INPUT

12" PVC Cable w/5P 16g Male 8A Connector

OUTPUT

12" PVC Cable w/5P 16g Female 8A Connector



JUNCTION BOX - POWER AND WIRE LEAD SIGNAL SPLITTER

JUNCTION BOX

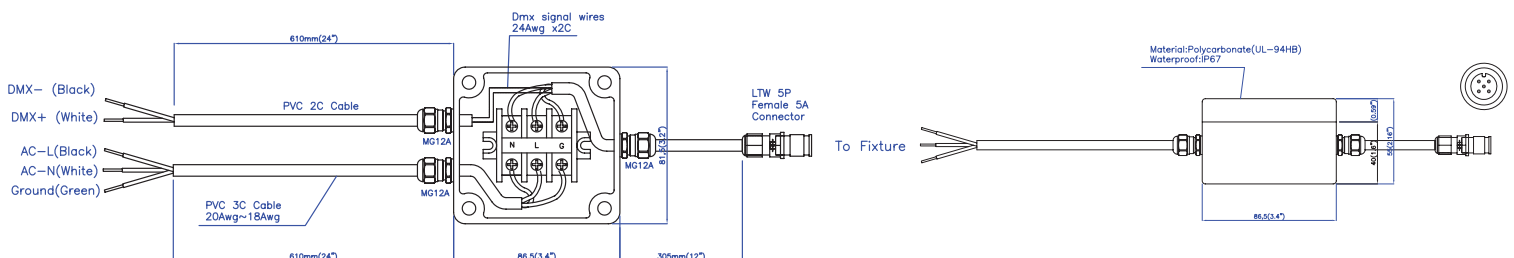
AC8A-DMX-3WB1

INPUT

24" PVC Cable (2 leads) for DMX Data
24" PVC Cable (3 leads) for AC Power

OUTPUT

12" Cable w/5P 16g Female 8A Connector



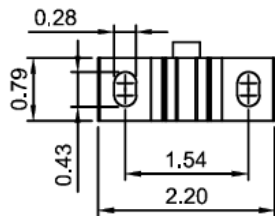
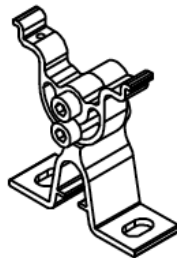
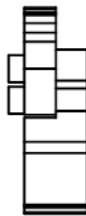
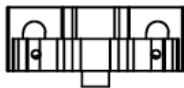
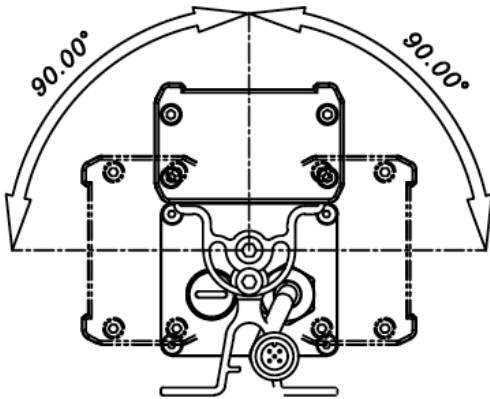
INTEGRATED ADJUSTABLE BRACKETS

DESCRIPTION

HB50 Adjustable Bracket

PART NUMBER

AL-HB50 ADJ.Bracket



SURGE PROTECTION

DESCRIPTION

Surge Protection Device

PART NUMBER

AL-LSP-UNV

The use of a surge protection device is necessary to maintain your warranty. Specifications are subject to change without notice.

SPECIFICATIONS

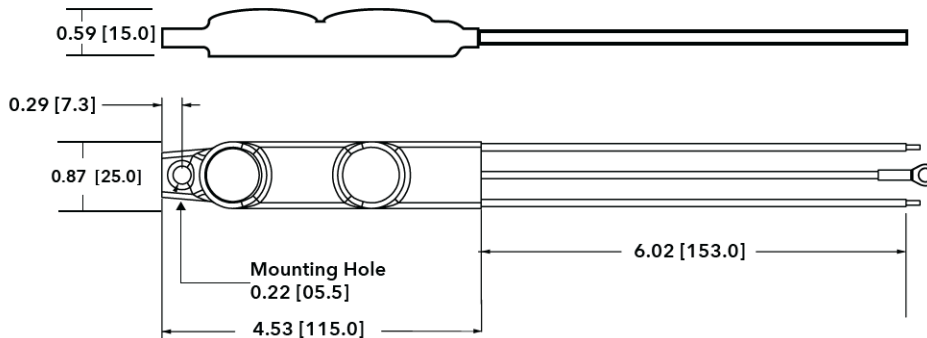
Input Voltage	120-277V (+/- 5%)		
Frequency	50Hz-60Hz		
Maximum Continuous Voltage	320V		
Maximum Discharge Current	L-N 20kA; L-G, N-G 10kA (8/20Qs standard wave)		
Nominal Discharge Current	5kA		
Measured Limiting Voltage (VpK)	L-N	L-G	N-G
	1200	1320	1320
Max Case Temperature	85°C		

PULSE RATING (8 X 20 SEC)

Surge Level	# of Strikes	
	L-N	L-G, N-G
10,000A	*2	1
6,500A	4	2
5,000A	30	15
2,000A	200	100
700A	20000	1000

*1 strike at 20,000A

MECHANICAL DIMENSIONS : IN (MM)



WIRING DIAGRAM

