

LED Flexible Strip

Specification

Part No.	Dimension (L*W*H)	IP Rating	Lumen Flux±10% @CRI80&4000K&23W	Light Eff. @CRI80&4000K&23W	Lumen Flux±10% @CRI90&4000K&27W	Light Eff. @CRI90&4000K&27W
HEDS-FE40-SO	5000*20*1mm [1.97*0.79*0.04in.]	IP20[dry]	3220lm/M [980lm/ft.]	140lm/W	3220lm/M [980lm/ft.]	119lm/W

Part No.	Dimension (L*W*H)	IP Rating	Lumen Flux±10%(IES) @CRI80&4000K&31W	Light Eff.(IES) @CRI80&4000K&31W	Lumen Flux±10%(IES) @CRI90&4000K&36W	Light Eff.(IES) @CRI90&4000K&36W
HEDS-FE40-HO	5000*20*1mm [1.97*0.79*0.04in.]	IP20[dry]	4120lm/M [1260lm/ft.]	133lm/W	4120lm/M [1260lm/ft.]	119lm/W

Notice: (1) The lumen flux value above is base on 1M[3.28ft.] length, it need to be measured and considered separately for other longer lengths.

(2) Energy efficiency class of regulation (EU) 2020/2015 is E[CRI80]/F[CRI90] for 4000K in IP20, it varies depending on CRI, CCT and IP rating.

General Parameters		Photoelectric Parameters	
Standard Length	5M [16.4ft] (power fed on one side)	Power±10%	23W/M [7W/ft.]@CRI80 & 27W/M [8.2W/ft.]@CRI90 31W/M [9.5W/ft.]@CRI80 & 36W/M [11W/ft.]@CRI90
Min. Unit & LED QTY	50mm [1.97in.] & 14 LEDs	Input Voltage	24VDC
LED Type	SMD2835 white	LED Current	25~30mA/LED@CRI80 & 30~35mA/LED@CRI90 30~35mA/LED@CRI80 & 37~42mA/LED@CRI90
LED QTY	280LED/M [85LED/ft.]	LED CCT & Wavelength	2700K&3000K&3500K&4000K&5000K&6500K
PCB Type	2oz white FPC, OSP	SDCM	ErP & ANSI Norm, 3 step
Operating Ambient	Ta(working):-20~45°C[-4~113°F] & Tstg(storage):-20~60°C[-4~140°F]	CRI	Ra≥80 & 90
Warranty	5 years	Beam Angle	120°
Lifespan	L70≥50,000@Tc≤65°C [149°F] (Tc is temperature of LED pin)	Dimming Method	PWM (dimmable driver like RF, Bluetooth, 0/1-10V, Triac, DALI, DMX, WIFI etc.)
Certification	CE, UL, CB, SAA, RoHS, LM80		

Note:

- 1: Luminous flux for CCT 2700K is 10% lower, for CCT 3000K/3500K is 5% lower, for CCT 5000K/6500K is the same, compared with 4000K.
- 2: Transmittance for IP54/IP67/IP68, 2700K/3000K is 95%, 3500K/4000K is 90%, 5000K/6500K is 80%; for IP65/IP54 Plus/IP67 Plus is 95%.
- 3: Dimension, CCT and lumen flux etc. of waterproof type will be different, compared with IP20 type.
- 4: Applying with extra heat sink for cooling is mandatory.
- 5: 3M 300LSE yellow adhesive tape attached on backside, is standard configuration of Plus Series.
- 6: One end of 200mm red/white silicon cable or waterproof connector kit according to specific IP rating, is standard configuration of Plus Series.
- 7: Transparent reel and silvery ESD bag, are standard configuration of Plus Series.
- 8: Installation accessories such as clip, screw, plug etc. are all optional base on specific demand.

LED Flexible Strip

Ordering Information

MODEL	COLOR	LENGTH	IP	VOLTAGE
HEDS-FE40S-SO HEDS-FE40S-HO	27K 2700K 30K 3000K 35K 3500K 40K 4000K 50K 5000K 65K 6500K	16.4 16.4' Reel CU Custom Length	20 IP20	24V 24 Volt DC

Accessories

FS-HEDS-FE40S-WL Wire lead connector for static white strip

FS-HEDS-FE40S-JC Jumper cable connector static white strip

FS-HEDS-FE40S-SSC Strip to strip connector for static white strip



Recommended Power Supplies

Dimmable with 0-10v, ELV, MLV, TRIAC



Item Number	Description	Max/Min Load	Input Voltage	Output Voltage	Dimmable	Dimensions
PS-TSLC-UNV-24V-30WDHV2	30W	30W / 3W	100-277V AC	24V DC	Yes*	6.49"L x 3.6"W x 1.02"H
PS-TSLC-UNV-24V-60WDHV2	60W	60W / 6W	100-277V AC	24V DC	Yes*	7.4"L x 3.6"W x 1.02"H
PS-TSLC-UNV-24V-96WDHV2	96W	96W / 9.6W	100-277V AC	24V DC	Yes*	8.66"L x 3.6"W x 1.61"H
PS-TSLC-UNV-24V-288WDHV2	288W (3 x 96W)	288W / 28.8W	100-277V AC	24V DC	Yes*	11.85"L x 4.25"W x 1.8"H

LED Flexible Strip

Aluminum Channel Compatibility (✓ Complete fit. ✓ Fit except the end caps.)

Mini Surface Mounted Series	MSM-3951	MSM-0335	MSM-3939	MSM-0603	MSM-4735			
	IP20 / IP54 Thin / IP54							
	IP54 Plus							
IP67 Plus Thin								
IP65 / IP67 / IP67 Plus / IP68								
Mini Recessed Mounted Series	MRM-6359	MRM-0547						
	IP20 / IP54 Thin / IP54							
	IP54 Plus							
IP67 Plus Thin								
IP65 / IP67 / IP67 Plus / IP68								
Regular Surface Mounted Series	RSM-6733	RSM-6760	RSM-5928	RSM-6351	RSM-4759	RSM-9354		
	IP20 / IP54 Thin / IP54							
	IP54 Plus							
IP67 Plus Thin								
IP65 / IP67 / IP67 Plus / IP68								
Regular Surface Mounted Series	RSM-6759	RSM-6760	RSM-7678-A	RSM-7679-B				
	IP20 / IP54 Thin / IP54							
	IP54 Plus							
IP67 Plus Thin								
IP65 / IP67 / IP67 Plus / IP68								
Regular Recessed Mounted Series	RRM-9831	RRM-9860	RRM-8367	RRM-9447				
	IP20 / IP54 Thin / IP54							
	IP54 Plus							
IP67 Plus Thin								
IP65 / IP67 / IP67 Plus / IP68								

LED Flexible Strip

Aluminum Channel Compatibility (✓ Complete fit. ✗ Fit except the end caps.)

Corner Mounted Series IP20 / IP54 Thin / IP54 IP54 Plus IP67 Plus Thin IP65 / IP67 / IP67 Plus / IP68	CM-6363 	CM-6363R 	CM-7272 						
Regular Suspension Series IP20 / IP54 Thin / IP54 IP54 Plus IP67 Plus Thin IP65 / IP67 / IP67 Plus / IP68	RS-80106R 	RS-80106-S 	RS-118 						
In Ground Series IP20 / IP54 Thin / IP54 IP54 Plus IP67 Plus Thin IP65 / IP67 / IP67 Plus / IP68	IG-84102 								
Wall Washer Series IP20 / IP54 Thin / IP54 IP54 Plus IP67 Plus Thin IP65 / IP67 / IP67 Plus / IP68	WW-1970 								

LED Flexible Strip

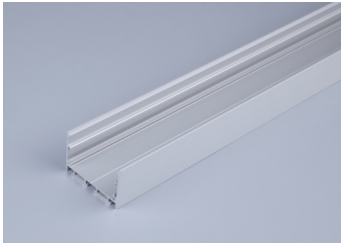
Aluminum Channel Compatibility (√ Complete fit. √ Fit except the end caps.)

Decorative Series	D-181102	D-209091	D-22059	D-24055	D-14045	D-14045S		
	IP20 / IP54 Thin / IP54			√				
	IP54 Plus							
IP67 Plus Thin								
IP65 / IP67 / IP67 Plus / IP68								
Office Suspension Series	OS-138	OS-197	OS-295					
	IP20 / IP54 Thin / IP54	√	√	√				
	IP54 Plus							
IP67 Plus Thin								
IP65 / IP67 / IP67 Plus / IP68								
Office Recessed Mounted Series	ORM-197	ORM-256	ORM-354					
	IP20 / IP54 Thin / IP54	√	√	√				
	IP54 Plus							
IP67 Plus Thin								
IP65 / IP67 / IP67 Plus / IP68								
Mounting Accessory Series for Waterproof Strip	MAWS-5030	MAWS-6030						
	IP20 / IP54 Thin / IP54							
	IP54 Plus							
IP67 Plus Thin								
IP65 / IP67 / IP67 Plus / IP68								

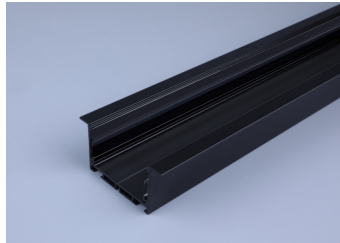
LED Flexible Strip

Aluminum Channel Compatibility

Aluminum Options



Silver

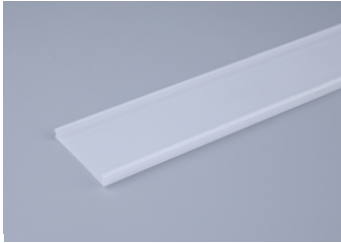


Black

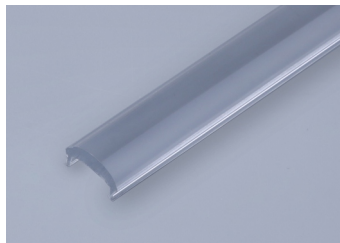


White

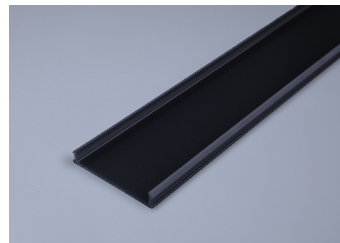
Diffusion PC Cover Options



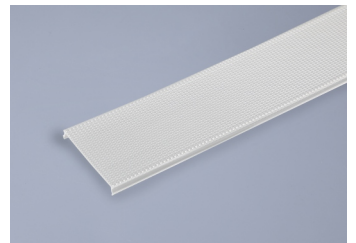
Milky
Transmission: 83%
For Dot-free



Transparent
Transmission: 93%
For High transmittance



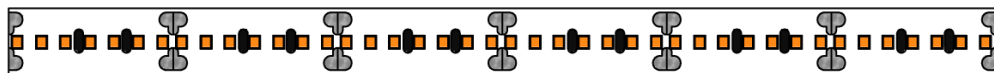
Black
Transmission: 60%
For Decoration



Prismatic
Transmission: 83%
For Anti-glare
UGR < 19 optional

Length Increment Diagram Illustration

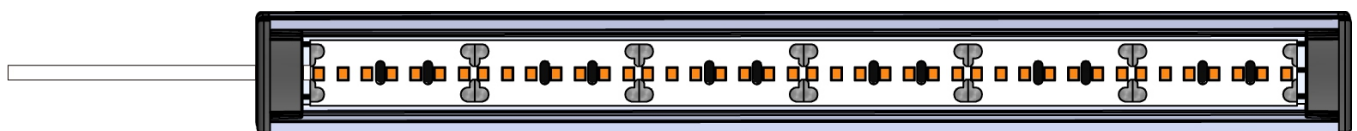
LED Strip



Aluminum Profile+Endcap



LED Strip+Cable+Aluminum Profile+Endcap



End Cap Length Extra Profile Length LED Strip Length Extra Profile Length End Cap Length