

LED Flexible Strip

High-Efficacy Series

160lm/W 1610-1950lm/ft



Features

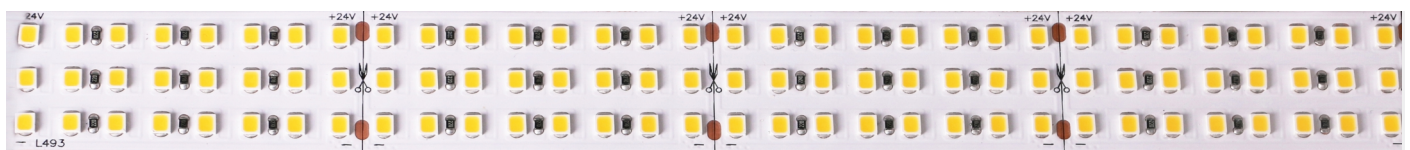
The HETS Series is a flexible, efficient, highly customizable LED strip. Available in 10-14 watts per foot and 160 lumens per watt, the HETS boasts both high efficacy with 24 LEDs per section, creating high output with half of the standard power consumption. The HETS offers maximum customization with multiple channel options and a segment length of 1.97". Standard color temperatures available. UL and CE with a 5 year warranty.

Application

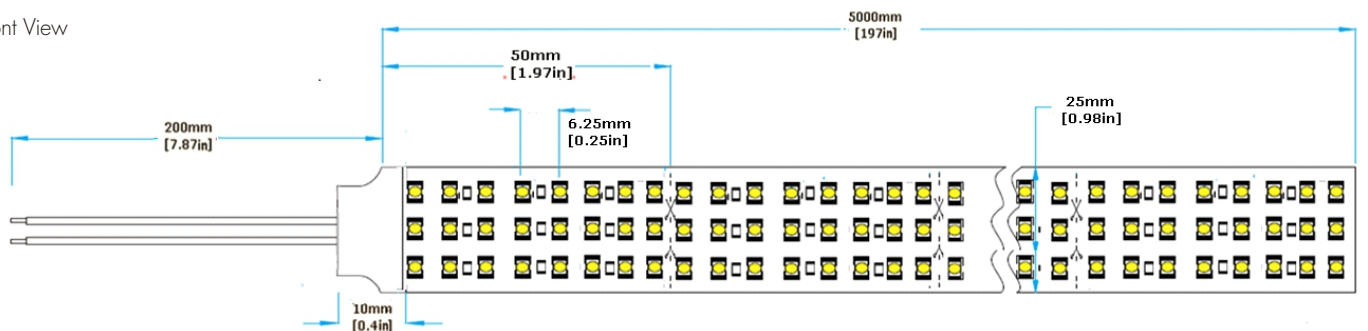
The HETS is engineered for indirect lighting in showcases, shelving, cabinetry, billboards, signage, hotels, gardens, bridges, corridors, ceilings, stairways, coves, theatres, elevators, and suitable for countless other applications.



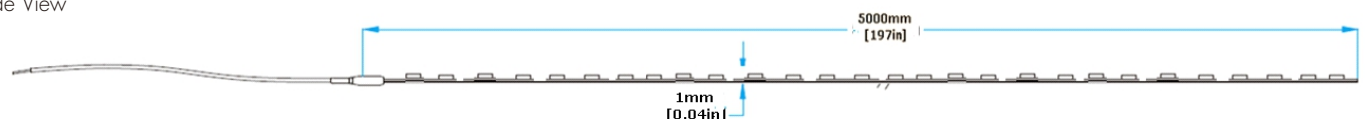
Diagram & Dimension



Front View



Side View



LED Flexible Strip

Specification

Part No.	Dimension (L*W*H)	IP Rating	Lumen Flux±10% @CRI80&4000K&33W	Light Eff. @CRI80&4000K&33W	Lumen Flux±10% @CRI90&4000K&39W	Light Eff. @CRI90&4000K&39W
HETS-L493S-SO	5000*25*1mm [1.97*1*0.04in.]	IP20[dry]	5280lm/M [1610lm/ft.]	160lm/W	5280lm/M [1610lm/ft.]	136lm/W

Part No.	Dimension (L*W*H)	IP Rating	Lumen Flux±10% @CRI80&4000K&40W	Light Eff. @CRI80&4000K&40W	Lumen Flux±10% @CRI90&4000K&47W	Light Eff. @CRI90&4000K&47W
HETS-L493S-HO	5000*25*1mm [1.97*1*0.04in.]	IP20[dry]	6400lm/M [1950lm/ft.]	160lm/W	6400lm/M [1950lm/ft.]	136lm/W

Notice: (1) The lumen flux value above is base on 1M[3.28ft.] length, it need to be measured and considered separately for other longer lengths.
 (2) Energy efficiency class of regulation (EU) 2019/2020 is D[CRI80]/E[CRI90] for 4000K in IP20, it varies depending on CRI, CCT and IP rating.

General Parameters		Photoelectric Parameters	
Standard Length	5M [16.4ft] (power fed on one side)	Power±10%	33W/M [10W/ft.]@CRI80 & 39W/M [11.9W/ft.]@CRI90, 40W/M [12.2W/ft.]@CRI80 & 47W/M [14.3W/ft.]@CRI90
Min. Unit & LED QTY	50mm [1.97in.] & 24 LEDs	Input Voltage	24VDC
LED Type	SMD2835 white	LED Current	21~25mA/LED@CRI80 & 26~30mA/LED@CRI90 26~30mA/LED@CRI80 & 31~36mA/LED@CRI90
LED QTY	480LED/M [146LED/ft.]	LED CCT & Wavelength	2700K, 3000K, 3500K, 4000K, 5000K, 6500K
PCB Type	3oz white FPC, OSP	SDCM	ErP & ANSI Norm, 3 step
Operating Ambient	Ta(working):-20~45°C[-4~113°F] & Tstg(storage):-20~60°C[-4~140°F]	CRI	Ra≥80 & 90
Warranty	5 years	Beam Angle	120°
Lifespan	L70≥50,000@Tc≤65°C [149°F] (Tc is temperature of LED pin)	Dimming Method	PWM (dimmable driver like RF, Bluetooth, 0/1-10V, Triac, DALI, DMX, WIFI etc.)
Certification	CE, UL, CB, SAA, RoHS, LM80		

Note: 1: Luminous flux for CCT 2700K is 10% lower, for CCT 3000K/3500K is 5% lower, for CCT 5000K/6500K is the same, compared with 4000K.
 2: Transmittance for IP54/IP67/IP68, 2700K/3000K is 95%, 3500K/4000K is 90%, 5000K/6500K is 80%; for IP65/IP54 Plus/IP67 Plus is 95%.
 3: Dimension, CCT and lumen flux etc. of waterproof type will be different, compared with IP20 type.
 4: Applying with extra heat sink for cooling is mandatory.
 5: 3M 300LSE yellow adhesive tape attached on backside, is standard configuration of Plus Series.
 6: One end of 200mm red/white silicon cable or waterproof connector kit according to specific IP rating, is standard configuration of Plus Series.
 7: Transparent reel and silvery ESD bag, are standard configuration of Plus Series.
 8: Installation accessories such as clip, screw, plug etc. are all optional base on specific demand.

LED Flexible Strip

Ordering Information

MODEL	COLOR	LENGTH	IP	VOLTAGE
HETS-L493S-SO HETS-L493S-HO	27K 2700K 30K 3000K 35K 3500K 40K 4000K 50K 5000K 65K 6500K	16.4 16.4' Reel CU Custom Length	20 IP20	24V 24 Volt DC

Accessories

FS-HETS-L493S-WL Wire lead connector for static white strip

FS-HETS-L493S-JC Jumper cable connector static white strip

FS-HETS-L493S-SSC Strip to strip connector for static white strip



Recommended Power Supplies

Dimmable with 0-10v, ELV, MLV, TRIAC



Item Number	Description	Max/Min Load	Input Voltage	Output Voltage	Dimmable	Dimensions
PS-TSLC-UNV-24V-30WDHV2	30W	30W / 3W	100-277V AC	24V DC	Yes*	6.49"L x 3.6"W x 1.02"H
PS-TSLC-UNV-24V-60WDHV2	60W	60W / 6W	100-277V AC	24V DC	Yes*	7.4"L x 3.6"W x 1.02"H
PS-TSLC-UNV-24V-96WDHV2	96W	96W / 9.6W	100-277V AC	24V DC	Yes*	8.66"L x 3.6"W x 1.61"H
PS-TSLC-UNV-24V-288WDHV2	288W (3 x 96W)	288W / 28.8W	100-277V AC	24V DC	Yes*	11.85"L x 4.25"W x 1.8"H

LED Flexible Strip

Aluminum Channel Compatibility (✓ Complete fit. ✗ Fit except the end caps.)

Mini Surface Mounted Series	MSM-3951	MSM-0335	MSM-3939	MSM-0603	MSM-4735			
	IP20 / IP54 Thin / IP54							
	IP54 Plus							
IP67 Plus Thin								
IP65 / IP67 / IP67 Plus / IP68								
Mini Recessed Mounted Series	MRM-6359	MRM-0547						
	IP20 / IP54 Thin / IP54							
	IP54 Plus							
IP67 Plus Thin								
IP65 / IP67 / IP67 Plus / IP68								
Regular Surface Mounted Series	RSM-6733	RSM-6760	RSM-5928	RSM-6351	RSM-4759	RSM-9354		
	IP20 / IP54 Thin / IP54							
	IP54 Plus							
IP67 Plus Thin								
IP65 / IP67 / IP67 Plus / IP68								
Regular Surface Mounted Series	RSM-6759	RSM-6760	RSM-7678-A	RSM-7679-B				
	IP20 / IP54 Thin / IP54							
	IP54 Plus							
IP67 Plus Thin								
IP65 / IP67 / IP67 Plus / IP68								
Regular Recessed Mounted Series	RRM-9831	RRM-9860	RRM-8367	RRM-9447				
	IP20 / IP54 Thin / IP54							
	IP54 Plus							
IP67 Plus Thin								
IP65 / IP67 / IP67 Plus / IP68								

LED Flexible Strip

Aluminum Channel Compatibility (✓ Complete fit. ✗ Fit except the end caps.)

Corner Mounted Series	CM-6363	CM-6363R	CM-7272					
	IP20 / IP54 Thin / IP54							
	IP54 Plus							
	IP67 Plus Thin							
IP65 / IP67 / IP67 Plus / IP68								
Regular Suspension Series	RS-80106R	RS-80106-S	RS-118					
	IP20 / IP54 Thin / IP54							
	IP54 Plus							
	IP67 Plus Thin							
IP65 / IP67 / IP67 Plus / IP68								
In Ground Series	IG-84102							
	IP20 / IP54 Thin / IP54							
	IP54 Plus							
	IP67 Plus Thin							
IP65 / IP67 / IP67 Plus / IP68								
Wall Washer Series	WW-1970							
	IP20 / IP54 Thin / IP54							
	IP54 Plus							
	IP67 Plus Thin							
IP65 / IP67 / IP67 Plus / IP68								

LED Flexible Strip

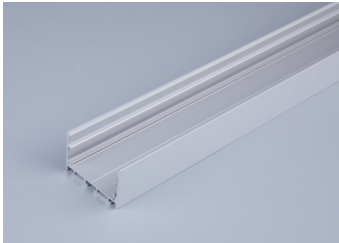
Aluminum Channel Compatibility (√ Complete fit. √ Fit except the end caps.)

Decorative Series	D-181102	D-209091	D-22059	D-24055	D-14045	D-14045S		
	IP20 / IP54 Thin / IP54							
	IP54 Plus							
	IP67 Plus Thin							
IP65 / IP67 / IP67 Plus / IP68								
Office Suspension Series	OS-138	OS-197	OS-295					
	IP20 / IP54 Thin / IP54	√	√	√				
	IP54 Plus							
	IP67 Plus Thin							
IP65 / IP67 / IP67 Plus / IP68								
Office Recessed Mounted Series	ORM-197	ORM-256	ORM-354					
	IP20 / IP54 Thin / IP54	√	√	√				
	IP54 Plus							
	IP67 Plus Thin							
IP65 / IP67 / IP67 Plus / IP68								
Mounting Accessory Series for Waterproof Strip	MAWS-5030	MAWS-6030						
	IP20 / IP54 Thin / IP54							
	IP54 Plus							
	IP67 Plus Thin							
IP65 / IP67 / IP67 Plus / IP68								

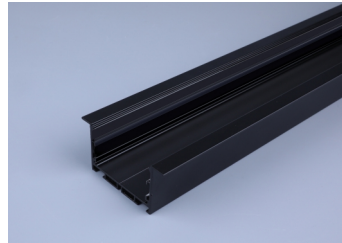
LED Flexible Strip

Aluminum Channel Compatibility

Aluminum Options



Silver

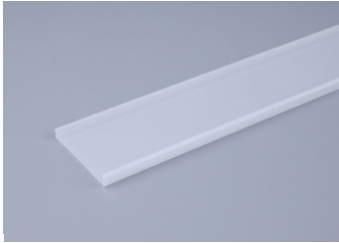


Black

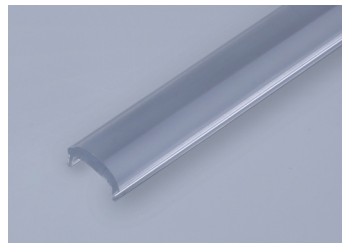


White

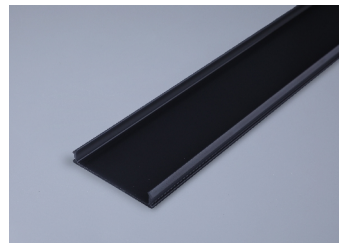
Diffusion PC Cover Options



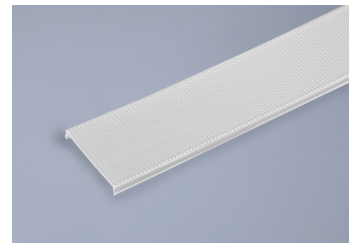
Milky
Transmission: 83%
For Dot-free



Transparent
Transmission: 93%
For High transmittance



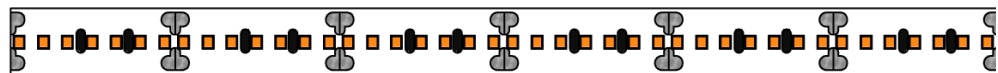
Black
Transmission: 60%
For Decoration



Prismatic
Transmission: 83%
For Anti-glare
UGR < 19 optional

Length Increment Diagram Illustration

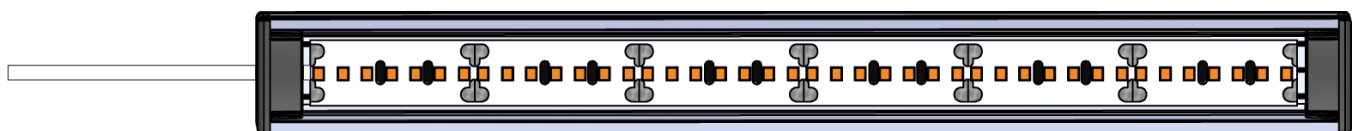
LED Strip



Aluminum Profile+Endcap



LED Strip+Cable+Aluminum Profile+Endcap



End Cap Length Extra Profile Length

LED Strip Length

Extra Profile Length End Cap Length