

Handrail Ordering Guidelines

To provide a proper quote, we need as much information as possible. We cannot give an accurate BOM quote simply based on X number of feet. If all we have is number of feet, we can give a budgetary quote for a Post or Wall Mounted rail. With the rapid fluctuations in commodity and shipping costs, this price could change. All projects not fully approved (including signatures on renderings) within 60 days of deposit are subject to price adjustments.

Quoting Phase - 1 to 2 Business Days

The following can help us provide you accurate and timely LED Handrail Pricing.

Drawings: We must have architectural drawings showing only for each rail section to be quoted. Complete architectural drawings should be provided in PDF format.

Measurements: Provide measurements from the drawings. Top and Side view are preferred but at a minimum, we need the Top view. (SEE DRAWING EXAMPLE BELOW)

Example:

Section HR1

A- 8.48 feet

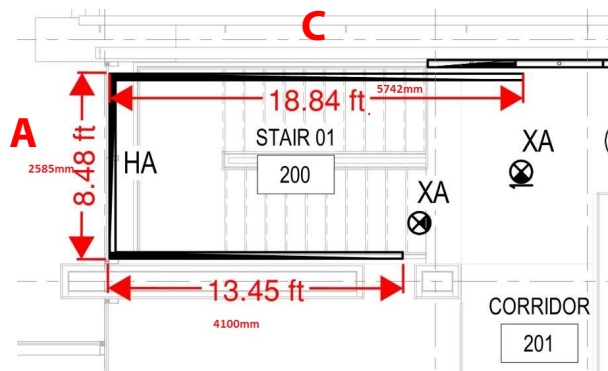
B-13.45 feet

C-18.84 feet

Wall mounted illuminated

Return at the top of the stairway

27k



Additionally, each railing section must be individually noted with the following:

- Each Rail section must be marked with a number and Run lengths on Each Rail Section must be noted on each drawing and listed separately along with the information below.
- Wall or Post Mounted.
- If Post Mounted, Core or Surface Mounted.
- Wall returns noted in locations needed.
- LED CCT.
- Indoor 304 or Outdoor 316 Stainless

**** Please note that the LED Strips come in 98ft lengths (30k or 65k) or 32.8ft (27k or 40k), so if your Handrail project is shorter than the LED Strip reel, you must still purchase the entire strip and factor that cost into your project. Cap rails come in 16'4" lengths and will be cut in the field.**

Drawing Package - 5-10 Business Days

Once you are ready to order, we require a 50% deposit. Once received, this will then trigger the drawing package which are rail drawings for this job showing where all the parts go for each section. This will be an additional charge based on the scope. Once drawings are approved by the customer, the order is picked and shipped. Most items are in stock without a lead time.

