

The JB36 Series Features

- UL Listed
- Certified to CSA Standard C22.2 No.9
- LED Life of 50K+ hours, under normal operating conditions
- Low wattage, low heat, low voltage at 24VDC
- Emits no UV or infrared light and does not contain lead, mercury or glass
- Eco-friendly handling and disposal when required
- Available in 2800K, 3000K, 3500K, 4100K, 5000K, & 6500K
- Available in 120° in configuration lengths
- Available in 5", 7", 12", 24", 36", & 48" lengths
- Simple magnetic connection and user friendly installation
- Nichia LED's
- Top quality connectors and mounting hardware
- Zero warm-up time and no reduction to lamp life in normal operating conditions

LINEAR LIGHT BAR – JB SERIES

Architectural Illumination Systems



JB36 24VDC



For more information visit us at...
thesmartlightingcompany.com

or call **949-346-3456**

1731 Kaiser Ave. Irvine, CA 92614

LED Light Bar

Part Numbers	Description	Dimension	Input Voltage	Output Power	Output Voltage	Output Current
LED120A-0024V-33F	80W ELECTRONIC Power Supply	8.34"x1.76"x1.1"	120	80	24	3.3
LEDINTA0024V41FO	100W ELECTRONIC Power Supply	9.5"x1.5"x1.2"	120/230 /277	100	24	4.1
LV-100-24N-UNV-J	100W ELECTRONIC Power Supply	11"x3"x1.4"	120/277	100	24	4.17
PS-9137-108-30902	0-10V ELECTRONIC Dimmer Module	5.2"x1.35"x1"	-	-	-	-
PS-LED1003R15X3	NEMA Enclosure (Optional)	13.4"x2.75"x2.32"	-	-	-	-



100W Advance Power Supply



Dimmer Module



80W Advance Power Supply



100W Hatch Power Supply



NEMA Enclosure

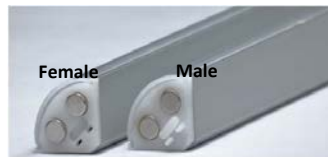
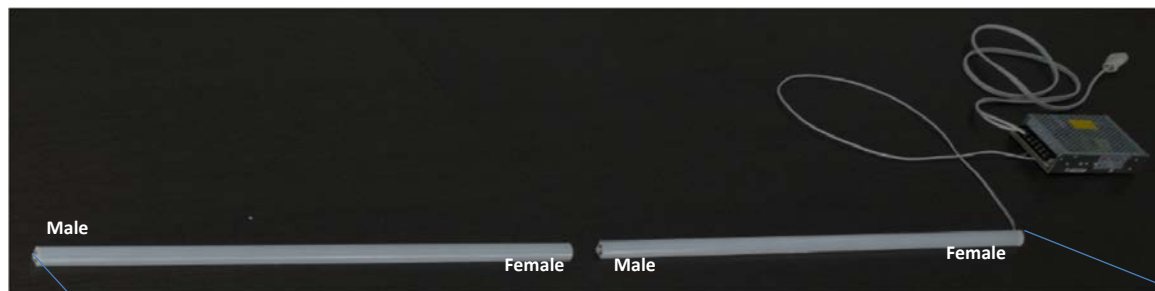
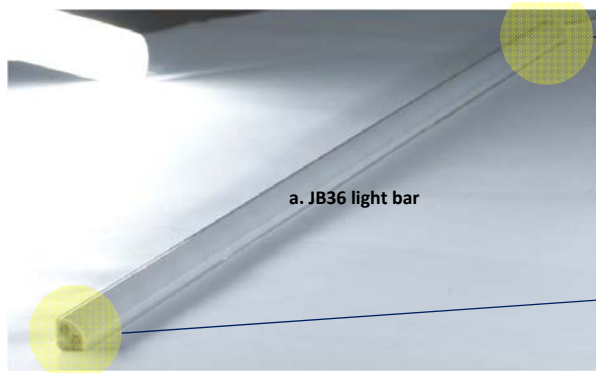
PREPARE ELECTRICAL WIRING**Electrical Requirements**

- This lighting system is supplied with an appropriate power supply driver unit; this appliance unit must be supplied with 120V, 60Hz. and connected to an individual properly grounded branch circuit, protected by a 15 or 20 Amp circuit breaker or time delay fuse. The JB LED Light Bar is a CLASS 2, 24VDC low voltage luminary and must be used with an appropriate power supply driver unit. Failure to connect this lighting system correctly will violate all warranty claims.
- Wiring must be 2 wires with ground and rated for 75°C (176°F).

Grounding Instructions-Cable Direct

This lighting system must be connected to a grounded metal, permanent wiring system, or an equipment grounding conductor must be run with the circuit conductors and be connected to the equipment grounding terminal.

JB36 Series INSTALLATION



Mounting Light Fixture with Mounting Clips

- Mounting clips, whether flat or rotating adjustable type, must be mounted to a flat surface using appropriate screws or other fasteners.
- See the mounting clip diagrams
- Lock out and tag out the circuit breaker for the lighting circuit of the area where the LED light fixtures are being installed.
- Turn the light switch to "off" to ensure no power is active.
- Remove any hazards in order to access the electrical raceway or necessary space.
- Use a Voltmeter and check that there is no voltage.
- Remove any existing fixtures, wiring harnesses, etc.
- Remove any Ballast or other power supplies from the electrical raceway or necessary space.
- Wear gloves to prevent injury when handling the old materials such as reflectors, ballasts, etc.

MOUNTING LIGHT FIXTURE (1)

FOR YOUR SAFETY

Read and observe all CAUTIONS and WARNINGS shown throughout these instructions. While performing installation described, gloves, safety glasses or goggles should be worn.

JB36 Series INSTALLATION



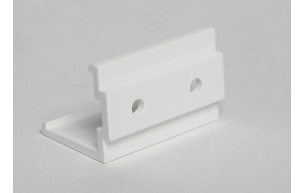
Starter wire with Terminal can be arranged in 3 ways when installation.



3 ways for wire running



Mounting Clips



Jumper Cables



Magnetic Terminal
No connectors or wires required.
Male must connect to Female (polarity sensitive)



Please move two bars horizontally when connecting or disconnecting.



MOUNTING LIGHT FIXTURE (2)

FOR YOUR SAFETY

Read and observe all CAUTIONS and WARNINGS shown throughout these instructions. While performing installation described, gloves, safety glasses or goggles should be worn.

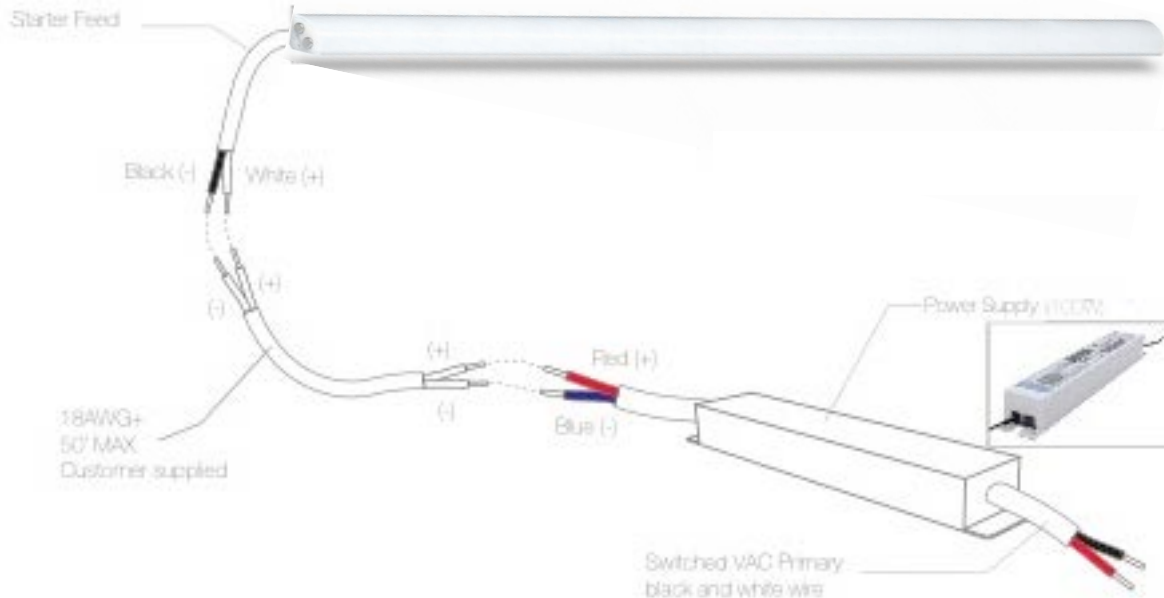
JB36 Series INSTALLATION

Notes Applicable Unless Otherwise Specified BEFORE YOU BEGIN

Read these instructions completely and carefully.

WARNING: TO REDUCE THE RISK OF FIRE, ELECTRICAL SHOCK OR INJURY, OBSERVE THE FOLLOWING:

- A.** Use these fixtures only in the manner intended by the manufacturer. If you have any questions, contact the manufacturer.
- B.** Before servicing or cleaning unit, switch power off at the service panel and follow appropriate lock out/tag out safety procedures.



Connect LED Power Supply

- Mount the LED power supply in the electrical raceway or as near as possible; or where the previous fluorescent ballast was located.
- Power supply has 120V 50/60HZ input (primary) and 24V DC output (secondary).
- Using the appropriate wiring diagram connect the original load and neutral wires to the LED power supply input wires (black and white wire) using approved connection method.
- IF NEEDED Mount one (1) DC dimming control module per one (1) power supply in close proximity to the LED Power Supply. This is not necessary when using Magnetic power supply drivers.
- Prior to installing LED Luminary, please check voltage from the Power Supply to ensure proper voltage
- Install LED Luminary into the mounting clips and tighten the small screws to hold the luminary in place. Fasten each luminary to the mounting clip. If using rotating adjustable clip, adjust the luminary as need and tighten the large screws on either side of the clip.
- Connect the LED Luminary male output connector to the female connector first cable going to the power supply.
- Connect the wires from the female connector first cable going to the power supply, to the wires that are coming out of the 24V DC (secondary) output of the power supply, using approved connectors for the application.

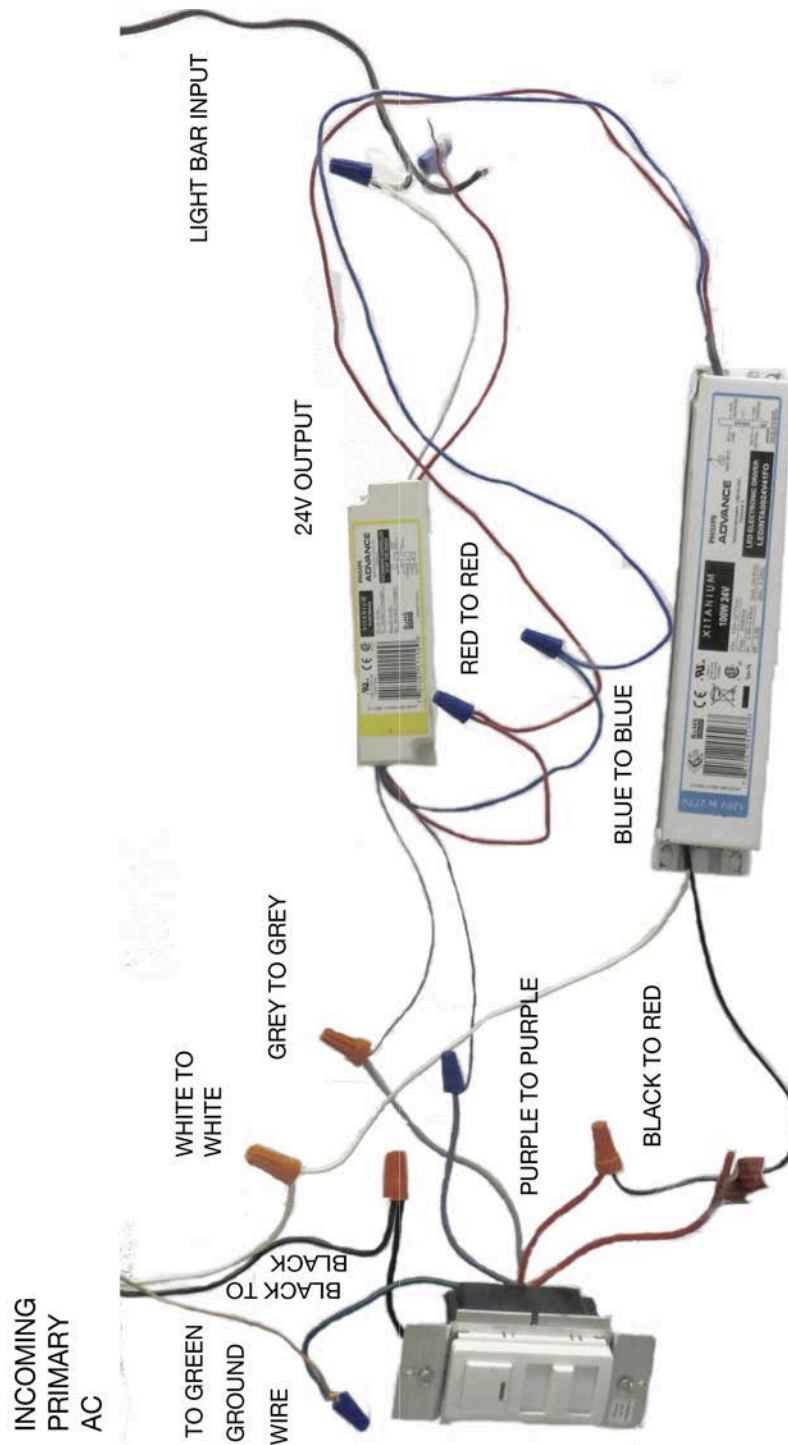
HB SERIES WIRING DIAGRAM

FOR YOUR SAFETY

Read and observe all CAUTIONS and WARNINGS shown throughout these instructions. While performing installation described, gloves, safety glasses or goggles should be worn.

JB36 Series INSTALLATION

0-10V Wiring Diagram



0-10V DIMMING WIRING DIAGRAM 100W

FOR YOUR SAFETY

Read and observe all **CAUTIONS** and **WARNINGS** shown throughout these instructions. While performing installation described, gloves, safety glasses or goggles should be worn.