

## SB12 HORIZONTAL REFRIGERATION LIGHTBAR

*LED ILLUMINATION SYSTEMS  
FOR MULTI-DECK REFRIGERATED CASES*





**106 lm/w - High efficacy**

**Single or joined fixtures for fast installation time.**

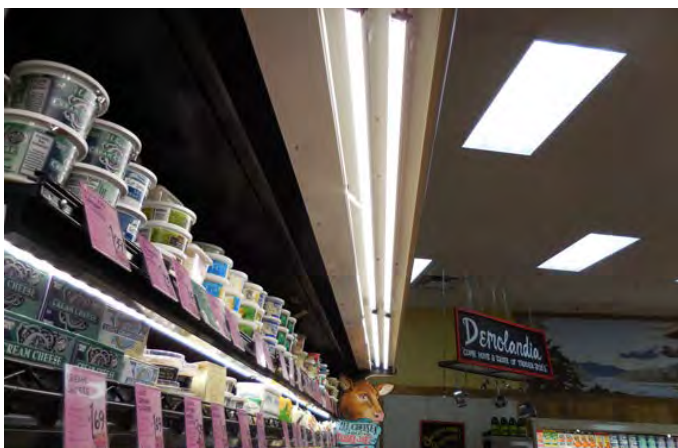
**Low wattage, low voltage, low heat operation**

**Increased energy savings**

**Dimmable with Occupancy sensors**

# SB12

**HORIZONTAL OPEN CASES**  
6w/ft | 563m/ft



## CANOPY | SHELF | CASE LIGHTING

The SB12 is designed to illuminate horizontal canopy, shelf and open cases. Top quality Nichia bin-sorted LEDs with high quality, even illumination. Combined with proper color temperature, quality illumination can increase the customer impulse to purchase.

Fixtures are available in single for 4ft and 6ft cases or joined for 8ft and 12ft cases which can significantly reduce installation time and labor costs.

As an innovator in the LED refrigeration lighting market, we were awarded the DOE Gateway Freezer case study in 2006/2008. We were also one of the first companies to receive DLC Listings on our refrigeration fixtures.



## LIGHT

### Color Temperatures

27k, 30k, 41k, 50k

### Beam Angle

120°

### LED's

Nichia bin-sorted

## PERFORMANCE

### Watt/Lumen

6.0w/ft | 563lm/ft

### Lumens/Watt

106

### CRI

85

## ELECTRICAL

### Input Voltage

24vdc

### Power Supply

External

### Control

Dimming

### Connection

Single or joined system

### LED Life rating

>100,000 hours

## PHYSICAL

### Fixture Length Options

48", 66", 48"x2, 66"x2

### Max Run Length

96w, (85% preferred, 90% max)

### Standard Mounting

Flat or adjustable standard clips

### Optional Mounting

Flat or adjustable magnetic clips

### Operating Temperature

-40°F to 122°F, (-40°C to 50°C)

## ENVIRONMENT AND WARRANTY

### Environment

Damp locations

### Certifications

UL, cUL, DLC

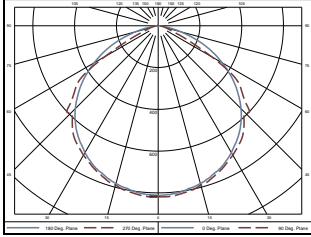
### Warranty

5 year limited warranty



## BEAM ANGLE

120°x 120°



## COLOR TEMPERATURES

2700k

3000k

4100k

5000k

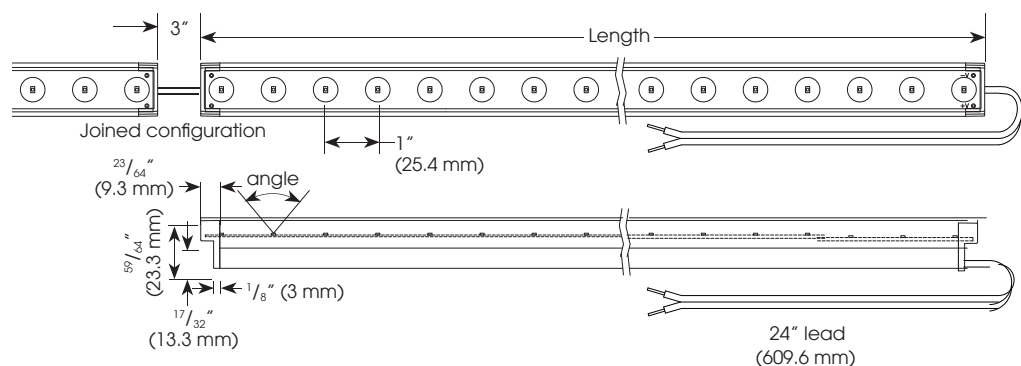
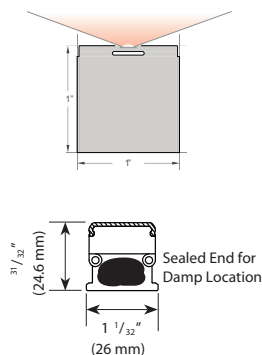
## DIMENSIONS AND DATA

MODEL	Voltage	Length	Watts/ Fixture	Lumens/ Fixture	Lumens/ Watt	Systems Wattage	Systems w/ft
SB12-48-XXK-24V-W/L	24VDC	48" single	24w	2252	106	20.4w	6w
SB12-48-XXK-24V-J		96" joined	48w	4504		40.8w	
SB12-66-XXK-24V-W/L		68" single	31w	3351		26.3w	
SB12-66-XXK-24V-J		132" joined	62w	6702		52.7w	

## CONFIGURATION

	46"	68"
4FT SHELF	X	
6FT SHELF		X
8FT SHELF	2X	
12FT SHELF		2X

## PROFILE



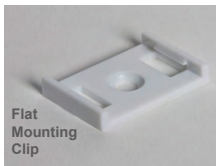
### CREATE YOUR FIXTURE

Ex. SB12-48"-41K-24V-W/L

MODEL	LENGTH	COLOR	VOLTAGE	LAYOUT
SB12	48" 66"	27k 30k 41k 50k	24V	W/L J
	48 inches 66 inches	2700k 3000k 4100k 5000k	24vdc	1 fixture Joined 2 fixtures

### MOUNTING

QTY	MOUNTING BRACKETS - 2 PER FIXTURE
	AL-SB-FLAT CLIP Flat mounting clip
	AL-SB-FLAT MAG CLIP Flat magnetic mounting clip
	AL-SB ROTO CLIP Adjustable mounting clip
	AL-SB ROTO MAG CLIP Adjustable magnetic mounting clip



### POWER SUPPLIES

QTY	POWER MULTIPLE FIXTURES ON ONE POWER SUPPLY
	LV-100-24-N 100w 24v power supply - 120-277v input Constant voltage, Class 2
	LV-80-24-N 80w 24v power supply - 120-277v input Constant voltage, Class 2

- Select an 80w (LV-80W) or 100w (LV-100W) power supply based on the case layout and total wattage of the run.
- Do not exceed maximum run length.

### MOUNTING AND INSTALLATION

- Attach mounting clips to mounting surface and then snap light bar into the mounting clips.
- Connect the wires from the fixture to the power supply according to the case/wattage layout with proper UL wire nuts. \*not included
- Connect the power supply to power by connecting input wires to line voltage according to power supply instructions.