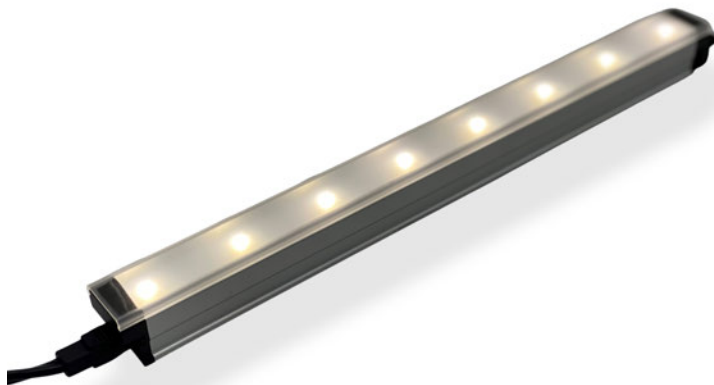


SB12

POWERFUL | LOW PROFILE
7w/ft - 620lm/ft



LINEAR LED LIGHTBAR

Interior:

Under Cabinet | Valances | Cove | Wall Lighting

Delivering powerful performance and architectural flexibility, The Smart Lighting Company SB12 Series spec-grade luminaire revolutionizes high-intensity interior lighting. Ideal for enhancing walls, valances, coves, shelves, and under cabinetry, this fixture boasts a remarkable output of 620 lumens per foot, driven by 24v remote drivers with optional 0-10v and ELV dimming for full lighting control. Seamless push fit connectors allow for fast, simple connections and enable continuous, uninterrupted light runs, perfect for custom layouts. With Nichia bin-sorted LEDs at the heart of each fixture, our lighting solutions offer the superior quality illumination that architects and lighting designers demand. The meticulously engineered optical lenses in our fixtures ensure an efficient light distribution, achieving more with less power. Options are available for fixture length, beam angle, CCT, mounting, and housing. Trust in our lighting to brighten your space with precision, all while maintaining the affordability you've come to expect from our brand.



SPECIFICATIONS

PERFORMANCE

Output

7w/ft - 620lm/ft

Color Temperatures

22k, 27k, 30k, 35k, 41k, 50k, 65k, R, G, B, A

Beam Angles

15°, 20°, 30°, 45°, 120°, 30°x60°

LEDs per Foot

12

LED's

Nichia bin-sorted

Color Consistency

2 SCDM

CRI

84 std, 90+ optional

ELECTRICAL

Input Voltage

24vDc

Power Supply

External

Control

0-10v dimming / ELV

Heat dissipation

Full thermal management system

Connection

Quick connect plug and play system
(power and signal in one cable)

Projected Lumen Maintenance

>90,000 hours

PHYSICAL

Fixture Length Options

12", 24", 36", 48", 60", 66"

Max Run Length

96w, 13ft

Housing

Extruded aluminum, tooled end caps

Lens

Polycarbonate

Fixture Finish (Standard)

Anodized aluminum

Powder Coated Finish (Optional)

Black, Bronze, White, CU

Standard Mounting

Adjustable or flat brackets

Operating Temperature

-40°F to 122°F, (-40°C to 50°C)

ENVIRONMENT AND WARRANTY

IP Rating

IP44

Environment

Dry or Damp locations
0-100% non-condensing humidity

Certifications

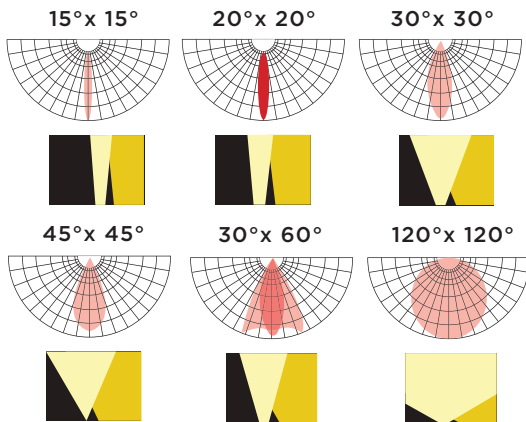
UL, cUL

Warranty

5 year limited warranty

SPECIFICATIONS

OPTICS



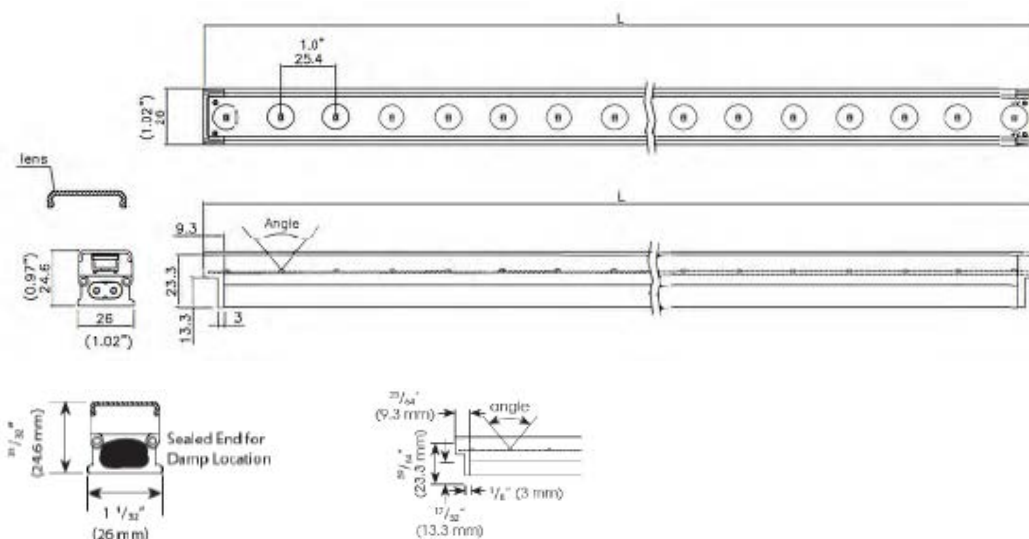
COLOR TEMPERATURES



DIMENSIONS AND DATA

7w/ft	Voltage	View Angle	Watts/ Fixture	Lumens/ Fixture	LEDs/ Fixture	Extrusion Length	Total Length
SB12-12-XXK-XXD-24V	24VDC	15°, 30° 45°,120° 30°x60°	6.6w	620	12	L=299.7mm	L=299.7mm (11.8")
SB12-24-XXK-XXD-24V			13.2w	1240	24	L=604.4mm	L=604.4mm (23.8")
SB12-36-XXK-XXD-24V			19.8w	1860	36	L=909.2mm	L=902.2mm (35.8")
SB12-48-XXK-XXD-24V			26.4w	2480	48	L=1214.0mm	L=1214.0mm (47.8")
SB12-60-XXK-XXD-24V			33.0w	3100	60	L=1518.8mm	L=1518.8mm (59.8")
SB12-66-XXK-XXD-24V			36.3w	3410	66	L=1671.2mm	L=1671.2mm (65.8")

PROFILE



Ex. SB12-48-30K-120-24V

CREATE YOUR FIXTURE

MODEL	LENGTH	COLOR	OPTICS
SB12	12" 12 inches	22k 2200k R Red	15 15°x15°
	24" 24 inches	27k 2700k G Green	30 30°x30°
	36" 36 inches	30k 3000k B Blue	45 45°x45°
	48" 48 inches	35k 3500k A Amber	3060 30°x60°
	60" 60 inches	41k 4100k	120 120°x120°
	66" 66 inches	50k 5000k	
		65k 6500k	

VOLTAGE
24 24vdc

SELECT CONNECTION

Wire Lead

QTY	STRAIGHT		
	AL-SB-EXT-ST-12"-W/L	12" (1ft) Straight wire lead	
	AL-SB-EXT-ST-72"-W/L	72" (6ft) Straight wire lead	
QTY	90 DEGREE		
	AL-SB-EXT-90D-12"-W/L	12" (1ft) 90° wire lead	
	AL-SB-EXT-90D-72"-W/L	72" (6ft) 90° wire lead	

* 1 wire lead required for each run.

End Cap

QTY		
	AL-SB-ENDCAP	End cap for fixture output at end of run

* 1 End cap required at the end of each

Jumper Cable

QTY	STRAIGHT		
	AL-SB-EXT-ST-6"-J	6" Straight jumper	
	AL-SB-EXT-ST-12"-J	12" Straight jumper	
QTY	90 DEGREE		
	AL-SB-EXT-90D-12"-J	6" 90° jumper	
	AL-SB-EXT-90D-72"-J	12" 90° jumper	

* Fixtures are end to end connected with butt connectors. Use jumpers if space is needed between fixtures.

Seamless Connectors

QTY		
	AL-SB-BUTT CONNECTOR	Seamless connector

SELECT MOUNTING

MOUNTING BRACKETS - 2 REQUIRED PER FIXTURE

QTY	AL-SB-FLAT CLIP	Flat mounting clip
	AL-SB-ROTO CLIP	Adjustable mounting clip

ADDITIONAL OPTIONS

Optional Powder Coated Finish

QTY	Powder coated finishes available for additional cost	
	BK	Black
	BZ	Bronze
	WH	White
	CU	Custom

* Fixture housing is anodized aluminum standard

0-10V Dimmer

QTY		
	LUT-DVSTV-WH	0-10V dimmer switch

Surge Protection

QTY		
	LSP4-UNV	120/277v surge protector

SELECT POWER SUPPLIES

CONSTANT VOLTAGE - BASED ON RUN LENGTHS

QTY		
	PS-TSLC-UNV-24V-96WDHV2	24v 96w power supply, 0-10v, ELV, TRIAC dimming, wet location
	PS-TSLC-UNV-24V-60WDHV2	24v 60w power supply, 0-10v, ELV, TRIAC dimming, wet location
	PS-TSLC-UNV-24V-30WDHV2	24v 30w power supply, 0-10v, ELV, TRIAC dimming, wet location
	PS-TSLC-UNV-24V-288WDHV2	24v 288w (96wx3) power supply, 0-10v, ELV, TRIAC dimming, wet location

WIRING OPTIONS

WIRE LEAD

DESCRIPTION

Straight wire lead

PART NUMBER

AL-SB-EXT-ST-xx-W/L



Straight Wire Lead

DESCRIPTION

90 degree wire lead

PART NUMBER

AL-SB-EXT-90d-xx-W/L



90° Wire Lead

JUMPER CABLE

DESCRIPTION

Straight jumper

PART NUMBER

AL-SB-EXT-ST-xx-J



Straight Jumper Cable

DESCRIPTION

90 degree jumper

PART NUMBER

AL-SB-EXT-90d-xx-J



90° Jumper Cable

SEAMLESS CONNECTOR

DESCRIPTION

Fixture connector

PART NUMBER

AL-SB-BUTT CONNECTOR



Easy seamless Installation to form a brilliant continuous light strip.

MOUNTING BRACKETS

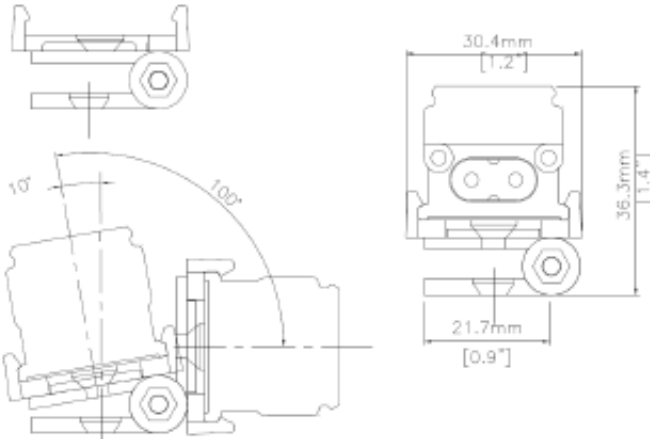
ADJUSTABLE BRACKETS

DESCRIPTION

SB12 Adjustable Bracket

PART NUMBER

AL-SB-ROTO CLIP



Adjustable Mounting Clip

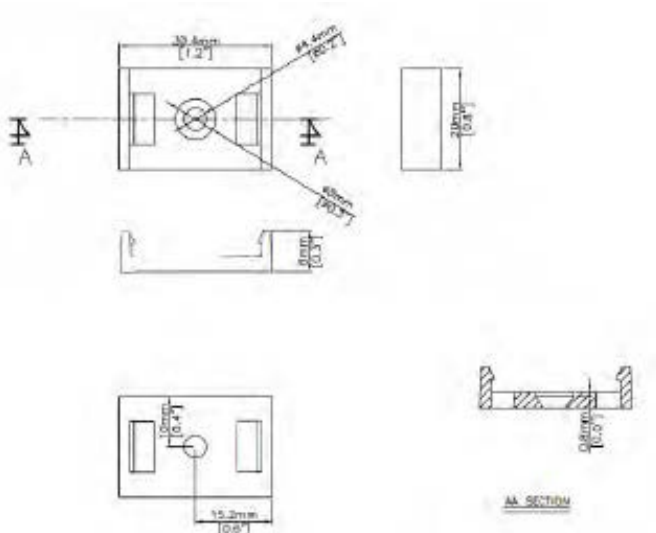
FLAT BRACKETS

DESCRIPTION

SB12 Flat Bracket

PART NUMBER

AL-SB-FLAT CLIP



Flat Mounting Clip

SURGE PROTECTION DEVICE

SURGE PROTECTION

DESCRIPTION

Surge Protection Device

PART NUMBER

AL-LSP-UNV

The use of a surge protection device is necessary to maintain your warranty. Specifications are subject to change without notice.

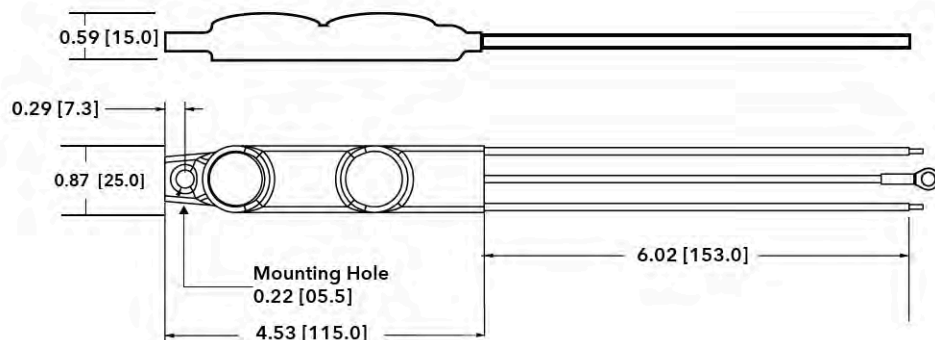
SPECIFICATIONS

Input Voltage	120-277V (+/- 5%)		
Frequency	50Hz-60Hz		
Maximum Continuous Voltage	320V		
Maximum Discharge Current	L-N 20kA; L-G, N-G 10kA (8/20Qs standard wave)		
Nominal Discharge Current	5kA		
Measured Limiting Voltage (VpK)	L-N	L-G	N-G
	1200	1320	1320
Max Case Temperature	85°C		

PULSE RATING (8 X 20 SEC)		
Surge Level	# of Strikes	
	L-N	L-G, N-G
10,000A	*2	1
6,500A	4	2
5,000A	30	15
2,000A	200	100
700A	20000	1000

*1 strike at 20,000A

MECHANICAL DIMENSIONS : IN (MM)



WIRING DIAGRAM

