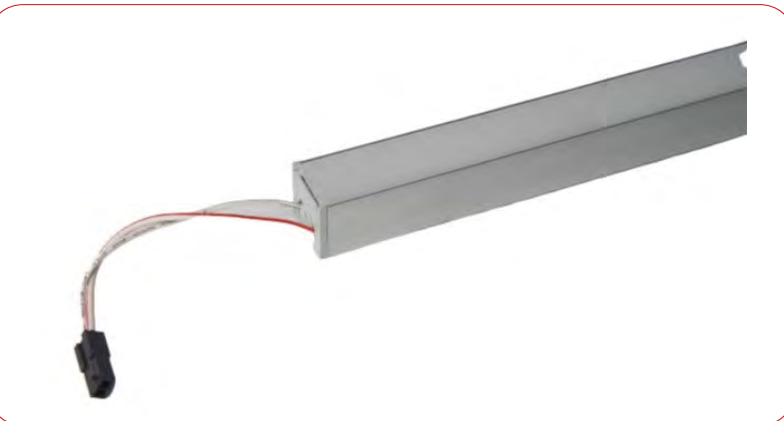




DIRECT VIEW | LOW PROFILE
5w/ft | 420lm/ft



Interior:

Shelving | Display | Under Cabinet | Cove Lighting

Introducing our architectural-grade ultra-slim luminaire, The Smart Lighting Company SB18 Series is tailored for spaces where the need for compact lighting is paramount. Using Nichia bin-sorted LEDs to deliver a bright 420 lumens per foot, this compact fixture measures just 3/4" x 3/4" and excels in delivering a consistent, fluid glow without pixelation, perfect for under-cabinet lighting, interior coves, shelving, and highlighting retail displays. Fixtures are 0-10v and ELV dimming. An external 24v universal power supply and easy connections allow for simplified and quick installation. Installation options include a choice of flat or adjustable mounting brackets, alongside the convenience of integrated magnetic mounting. This luminaire provides high-intensity, even illumination in a discreet form factor, at an affordable price.



PERFORMANCE

Output

5w/ft | 420lm/ft

Color Temperatures

27k, 30k, 35k, 41k, 50k, 65k

Beam Angles

120°

LEDs per Foot

36

LED's

Nichia bin-sorted

Color Consistency

2 SCDM

CRI

85 standard, 95 optional

PHYSICAL

Fixture Length Options

5", 7", 12", 17", 19", 24", 36", 48"

Max Run Length

96w, 21ft. (85% preferred, 90% max)

Housing

Aluminum

Lens

Polycarbonate diffused

Standard Mounting

Flat clips

Operating Temperature

-40°F to 122°F, (-40°C to 50°C)

ELECTRICAL

Input Voltage

24vdc

Power Supply

External remote

Control

Standard and 0-10v dimming
(Based on power supply)

Connection

Quick connect system

Projected Lumen Maintenance

>90,000 hours

ENVIRONMENT AND WARRANTY

IP Rating

IP20

Environment

Dry locations

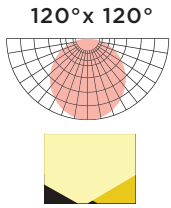
Certifications

UL, cUL

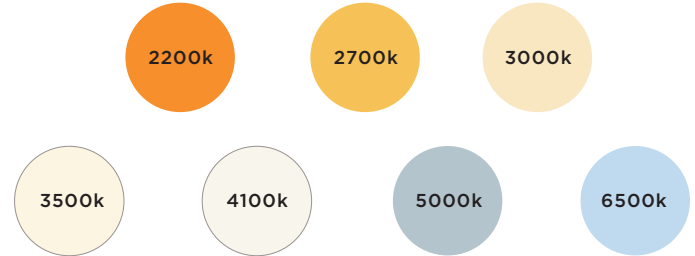
Warranty

5 year limited warranty

OPTICS



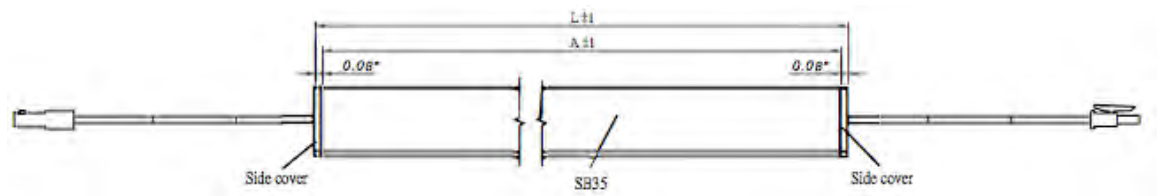
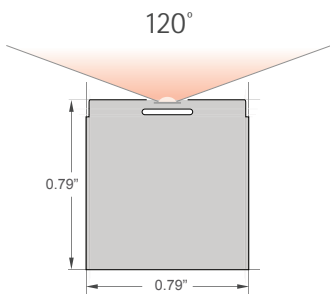
COLOR TEMPERATURES



DIMENSIONS AND DATA

	Voltage	View Angle	Watts/Fixture	Lumens/Fixture	LEDs/Foot	Lumens/Watt	Watts/foot
SB18-5"-XXK-120D-24V	24VDC	120°	2.08w	175	36	76lm/w	5w/ft
SB18-7"-XXK-120D-24V			2.91w	245			
SB18-12"-XXK-120D-24V			5w	420			
SB18-17"-XXK-120D-24V			7.08w	595			
SB18-19"-XXK-120D-24V			7.91w	665			
SB18-24"-XXK-120D-24V			10w	840			
SB18-36"-XXK-120D-24V			20w	1260			
SB18-48"-XXK-120D-24V			30w	1680			

PROFILE



CREATE YOUR FIXTURE

Ex. SB18-48-35-120-24V

MODEL	LENGTH	COLOR	OPTICS	VOLTAGE
SB18	5" 7" 12" 17" 19" 24" 36" 48"	5 inches 7 inches 12 inches 17 inches 19 inches 24 inches 36 inches 48 inches	22k 25k 27k 30k 35k 41k 50k 65k	2200k 2500k 2700k 3000k 3500k 4100k 5000k 6500k
			120	120°x120°
				24v 24vdc

SELECT CONNECTION

Wire Lead

QTY

SB18-72"-W/L	72" (6ft) Wire lead
SB18-xx"-W/L	xx" (CU) Wire lead

* 1 wire lead required for each run.

Jumper Cable

QTY

SB18-6"-J	6" jumper
SB18-12"-J	12" jumper
SB18-xx"-J	xx"J (CU) jumper

* Fixtures are end to end connected.
 Use jumpers if space is needed between fixtures.

ADDITIONAL OPTIONS

0-10V Dimmer

QTY

LUT-DVSTV-WH	0-10v AC Wall switch
--------------	----------------------

Surge Protection

QTY

LSP4-UNV	120/277v surge protector
----------	--------------------------

SELECT MOUNTING

QTY **MIN. 2 PER FIXTURE**

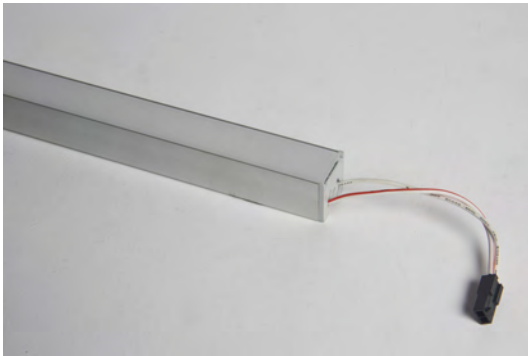
SB18-FLAT CLIP	Flat Mounting clip
SB18-ADJ CLIP	Adjustable Mounting clip

SELECT POWER SUPPLIES

QTY **CONSTANT VOLTAGE - BASED ON RUN LENGTHS**

PS-TSLC-UNV-24V-96WDHV2	24v 96w power supply, 0-10v, ELV, TRIAC dimming, wet location
PS-TSLC-UNV-24V-60WDHV2	24v 60w power supply, 0-10v, ELV, TRIAC dimming, wet location
PS-TSLC-UNV-24V-30WDHV2	24v 30w power supply, 0-10v, ELV, TRIAC dimming, wet location
PS-TSLC-UNV-24V-288WDHV2	24v 288w (96wx3)power supply, 0-10v, ELV, TRIAC dimming, wet location

LAYOUT



Wire lead



Seamless Connection



Easy seamless Installation to form a brilliant continuous light strip.

ORDERING CRITERIA

- POWER SUPPLY - 1 run per Wattage Specification of Light Bar
1 run - 72" Standard Wire Lead

* Jumper Cable required when light bars are installed with space required between lightbars

CALCULATING BOM FOR R.F.Q.

TYPE OF APPLICATION: _____

TOTAL LENGTH (FEET, INCHES): _____

TOTAL OF RUNS #: _____

LENGTHS ON EACH RUN

#1: _____ #2: _____ (List all runs individually)

#3: _____ #4: _____

#5: _____ #6: _____

(Add up all the lengths on all Runs to ensure the total matches TOTAL Length)

A) For Each Run, use # length to determine # of Bars needed (Example: 6' 5" length = 77" total; Number of Bars = Qty 2 @ 36" and Qty 1 @ 5")

Length: _____ = Qty _____ @ _____" Bars (or Multiple combinations of)

B) Then determine quantity of bars per Power Supply using the data from Electrical Specification

(Example: Qty 2 @ 36" = (2 x 15W) = 30W and Qty 1 @ 5" = 2.08W; therefore 30W + 2.08W = 32.08W)

Qty _____ x _____ W/ Bars + Qty _____ x _____ W/Bars (or Multiple combinations of) = Total of _____ Watt

(Determine number of Power Supplies needed per Total Wattage calculated. *Note: Wattage to not exceed 85% load of Power Supply selected*)

C) Once # of Power Supplies is determined, use the Accessories Ordering Criteria above on this page to determine accessories part needed.
If dimming is not required, eliminate Slide Dimmer.

Qty _____ Power Supply = Qty of P/S (selected by wattage needed)

Qty _____ 72" Standard Wire Lead

D) Determine number of mounting brackets required by using the Mounting Specification on top of this page:

Qty _____ Bar = Qty _____ Brackets (Example: Qty 2 @ 36" = 2 x 3 brackets = 6 brackets)