

SB33 HORIZONTAL REFRIGERATION LIGHTBAR

*LED ILLUMINATION SYSTEMS
FOR MULTI-DECK REFRIGERATED CASES*

VTSLC
THE SMART LIGHTING COMPANY



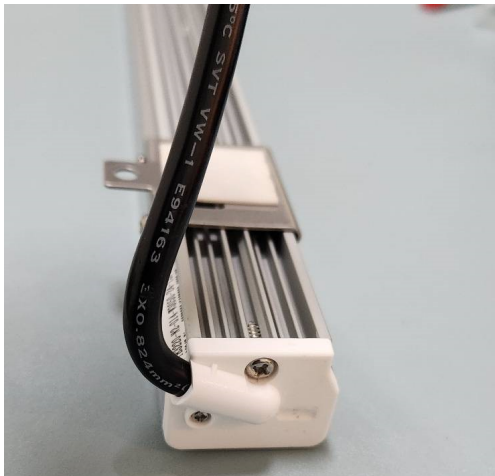


- 100-113lm/w - High efficacy
- Single or joined fixtures for fast installation time.
- Low wattage, low voltage, low heat operation
- Increased energy savings

SB33

CANOPY | SHELF | CASE LIGHTING

HORIZONTAL OPEN CASES
 6w/ft - 650lm/ft | 7w/ft - 764lm/ft



The SB33 is designed to illuminate horizontal canopy, shelf and open cases. Top quality Nichia bin-sorted LEDs produce high quality, even illumination. Combined with choice of optical beam angles and proper color temperature, quality illumination can increase the customer impulse to purchase.

Fixtures are available in 46" lengths and can be joined for 8ft and 12ft cases which can significantly reduce installation time and labor costs.

As an innovator in the LED refrigeration lighting market, we were awarded the DOE Gateway Freezer case study in 2006/2008. We were also one of the first companies to receive DLC Listings on our refrigeration fixtures.



SPECIFICATIONS

LIGHT

Color Temperatures

27k, 30k, 35k, 41k

Beam Angle

18°x26°, 13°x17°, 120°

LED's

Nichia bin-sorted

PERFORMANCE

Watt/Lumen

6w/ft | 650lm/ft

7w/ft | 764lm/ft

Lumens/Watt

100-113lm/w

CRI

85 or 95

ELECTRICAL

Input Voltage

24vdc

Power Supply

External

Connection

Single or joined system

LED Life rating

>100,000 hours

PHYSICAL

Fixture Length Options

46" (4ft case),

46" x 2 (8ft case) , 46"x3" (12ft case)

Max Run Length

96w, (85% preferred, 90% max)

Mounting Options

Stationary Flat or adjustable clips secured with screws or magnets

Operating Temperature

-40°F to 122°F, (-40°C to 50°C)

ENVIRONMENT AND WARRANTY

Environment

IP66, Wet locations

Certifications

UL, cUL,

Warranty

5 year limited warranty



COLOR TEMPERATURES



DIMENSIONS AND DATA

6w/ft

18°x26° optical lens

MODEL	Voltage	Length	Watts/ Fixture	Lumens/ Fixture	Lumens/ Watt	Systems Wattage	Systems w/ft
SB33-6-46-XXK-24V-W/L	24VDC	46" single	23w	2284	88	23w	6w
SB33-6-46-XXK-24V-J2		92" joined	46w	4568		46w	
SB33-6-46-XXK-24V-J3		138" joined	69w	6852		69w	

120° no optics

MODEL	Voltage	Length	Watts/ Fixture	Lumens/ Fixture	Lumens/ Watt	Systems Wattage	Systems w/ft
SB33-6-46-XXK-24V-W/L	24VDC	46" single	23w	2491	88	23w	6w
SB33-6-46-XXK-24V-J2		92" joined	46w	4982		46w	
SB33-6-46-XXK-24V-J3		138" joined	69w	7473		69w	

7w/ft

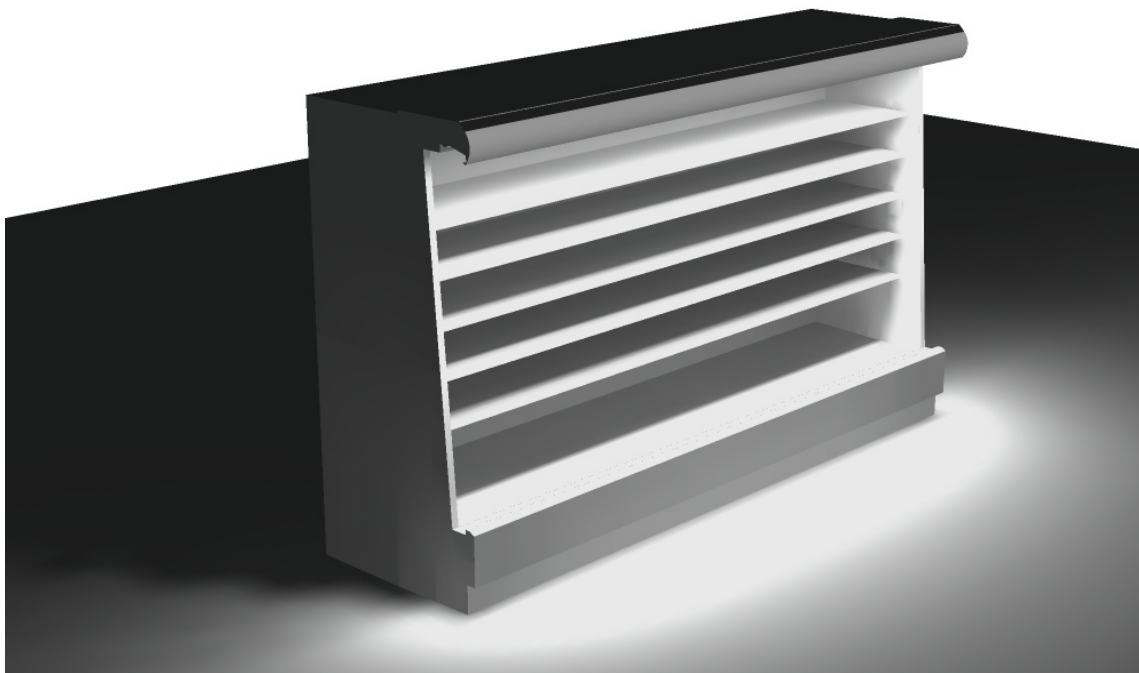
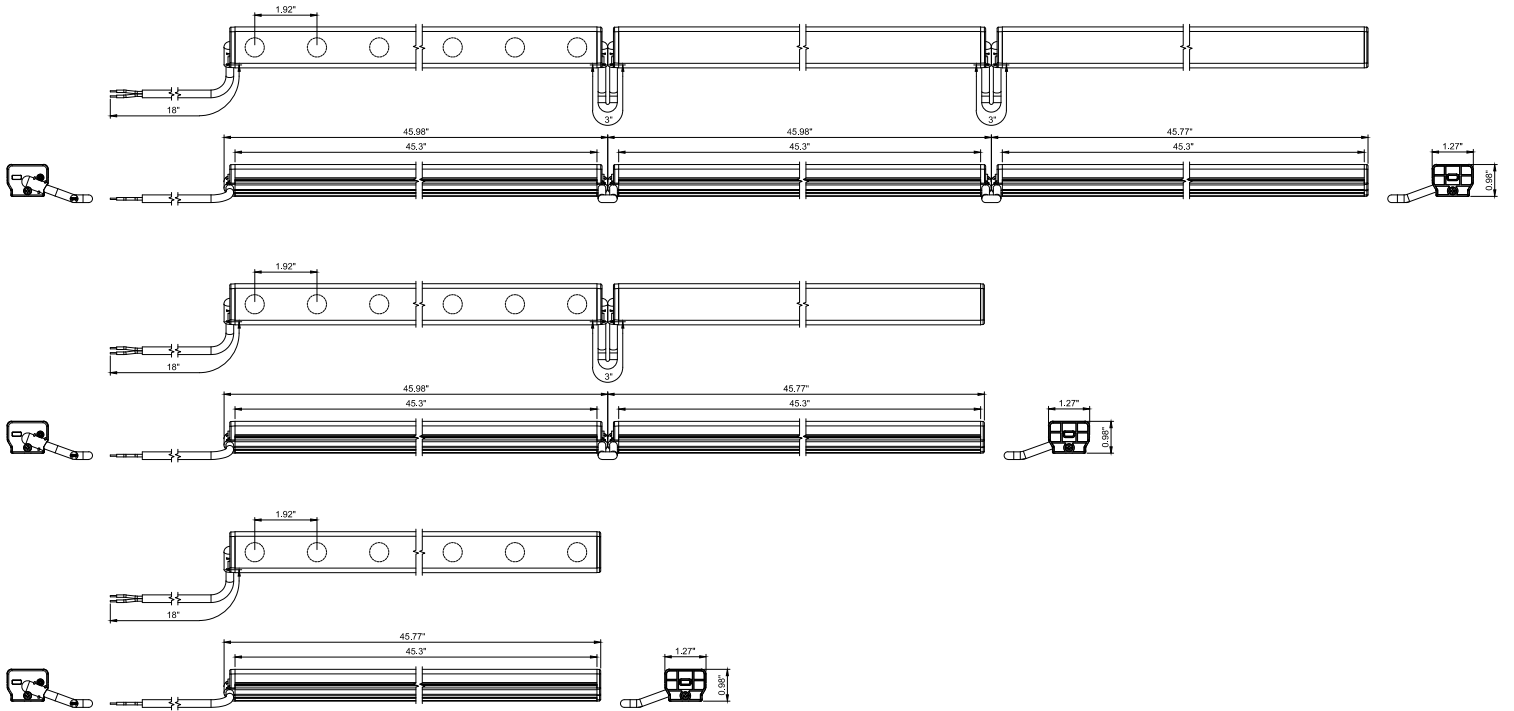
18°x26° optical lens

MODEL	Voltage	Length	Watts/ Fixture	Lumens/ Fixture	Lumens/ Watt	Systems Wattage	Systems w/ft
SB33-7-46-XXK-24V-W/L	24VDC	46" single	27w	2680	88	27w	7w
SB33-7-46-XXK-24V-J2		92" joined	54w	5360		54w	
SB33-7-46-XXK-24V-J3		138" joined	81w	8040		81w	

120° no optics

MODEL	Voltage	Length	Watts/ Fixture	Lumens/ Fixture	Lumens/ Watt	Systems Wattage	Systems w/ft
SB33-7-46-XXK-24V-W/L	24VDC	46" single	27w	2930	88	27w	7w
SB33-7-46-XXK-24V-J2		92" joined	54w	5860		54w	
SB33-7-46-XXK-24V-J3		138" joined	81w	8790		81w	

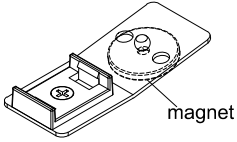
PROFILE



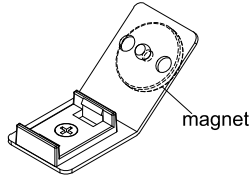
SPECIFICATIONS

MOUNTING OPTIONS - MAGNETIC

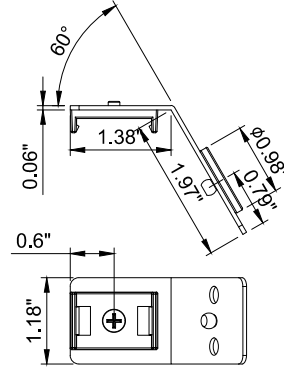
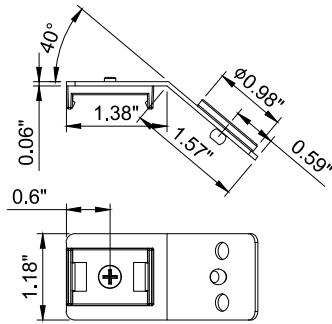
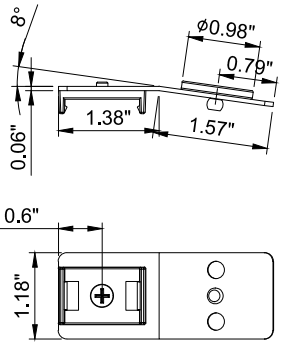
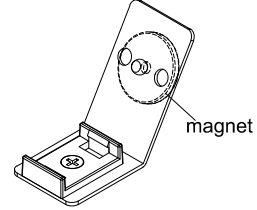
Clip A



Clip B

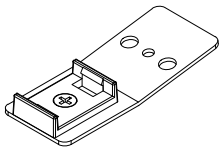


Clip C

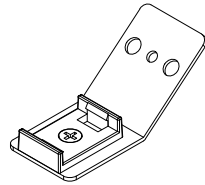


MOUNTING OPTIONS - SCREWS

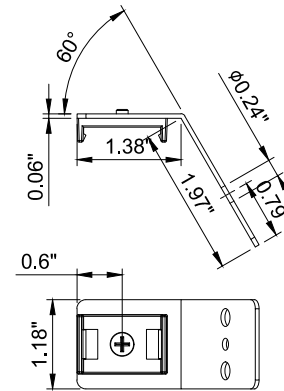
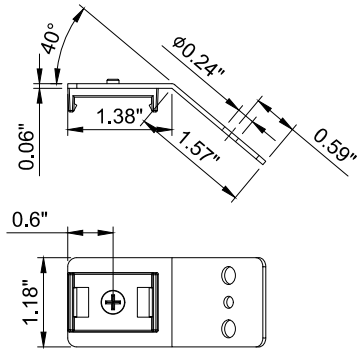
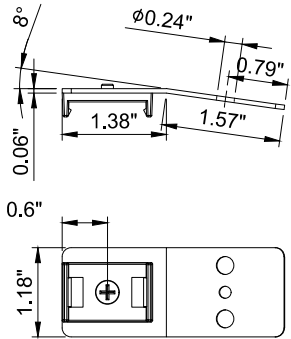
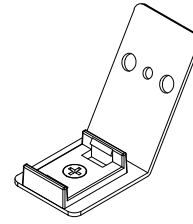
Clip D



Clip E



Clip F



ORDER FORM

CREATE YOUR FIXTURE

Ex. SB33-6-46"J2-35K-24V

MODEL		LENGTH		COLOR		OPTICS		VOLTAGE	
SB33-6	6w/ft	46"S	46 inches	27k	2700k	1858	18X58	24	24 dc
SB33-7	7w/ft	46"J2	8ft case	30k	3000k	1317	13X17		
		46"J3	12ft case	35k	3500k	120	120		
				41k	4100k				

MOUNTING

QTY	MOUNTING BRACKETS - 2 PER FIXTURE	
	AL-SB-FLAT CLIP	Flat mounting clip
	AL-SB-FLAT MAG CLIP	Flat magnetic mounting clip
	AL-SB ROTO CLIP	Adjustable mounting clip
	AL-SB ROTO MAG CLIP	Adjustable magnetic mounting clip



POWER SUPPLIES

QTY	POWER MULTIPLE FIXTURES ON ONE POWER SUPPLY	
	LV-100-24-N	100w 24v power supply - 120-277v input Constant voltage, Class 2
	LV-80-24-N	80w 24v power supply - 120-277v input Constant voltage, Class 2

Select an 80w (LV-80W) or 100w (LV-100W) power supply based on the case layout and total wattage of the run.
Do not exceed maximum run length.

MOUNTING AND INSTALLATION

Attach mounting clips to mounting surface and then snap light bar into the mounting clips.
Connect the wires from the fixture to the power supply according to the case/wattage layout with proper UL wire nuts. *not included
Connect the power supply to power by connecting input wires to line voltage according to power supply instructions.