

Rectangle Aluminum Illuminated Handrail

Application

Smartlights by Smart Railing is a Modular System for use in interior or exterior commercial and residential applications. The LED illuminated handrail or cap rail produces a continuous stream of light adding safety and atmosphere. The system is pre-wired with no visible cables. Simple to install, the OSRAM LED strips simply click into place. The 24v system uses IP67 LED's for outdoor and IP20 LED's for indoor applications. Dimmable power supplies make this ideal for darker interior applications such as theaters and concert halls. The system is UL listed.

Railing

The Rectangle aluminum illuminated cap rail is a glass mounted rail system and allows the LED strips to be positioned in front of or behind the glass. Choose from 50° or 22.5° spread during installation. LED strips are covered by transparent or frosted lenses.

LEDS

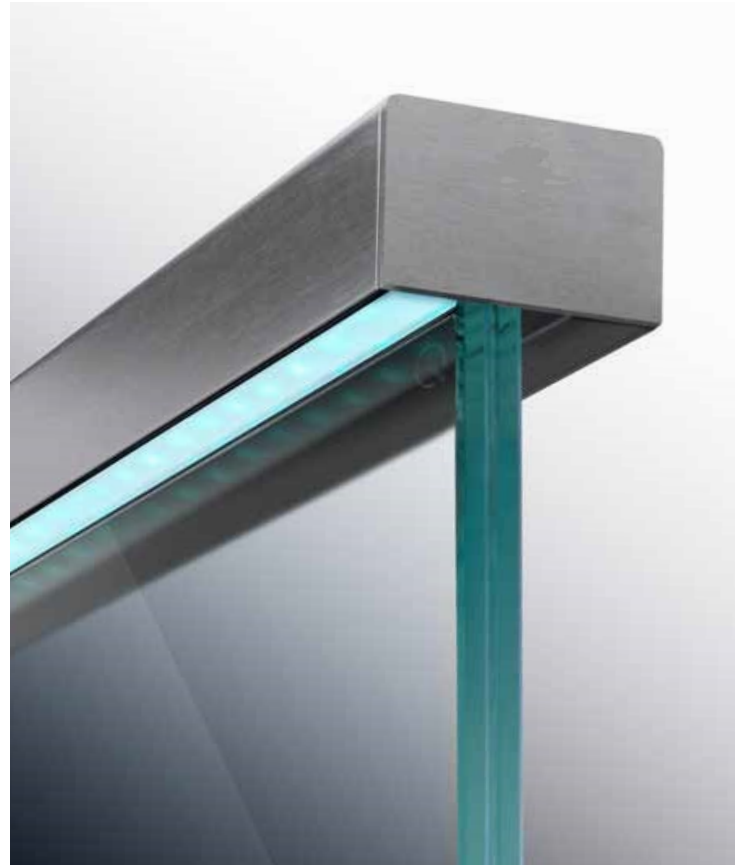
LED Strips are recessed into the underside of the handrail. The OSRAM LED Strips are rated up to 60,000 hours and produce up to 366 lumens at 2.71 watts per foot. Standard color temperatures in stock are 27k and 40k. Other color temperatures and lumen outputs may be ordered and require additional lead time.++

Installation

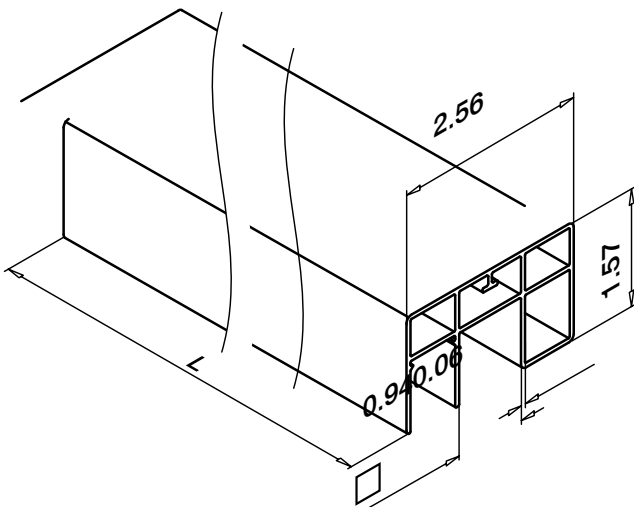
The Smartlights system is modular and designed for simple assembly and installation.

Certifications

UL, cULus, ANSI, ADA



Profiles

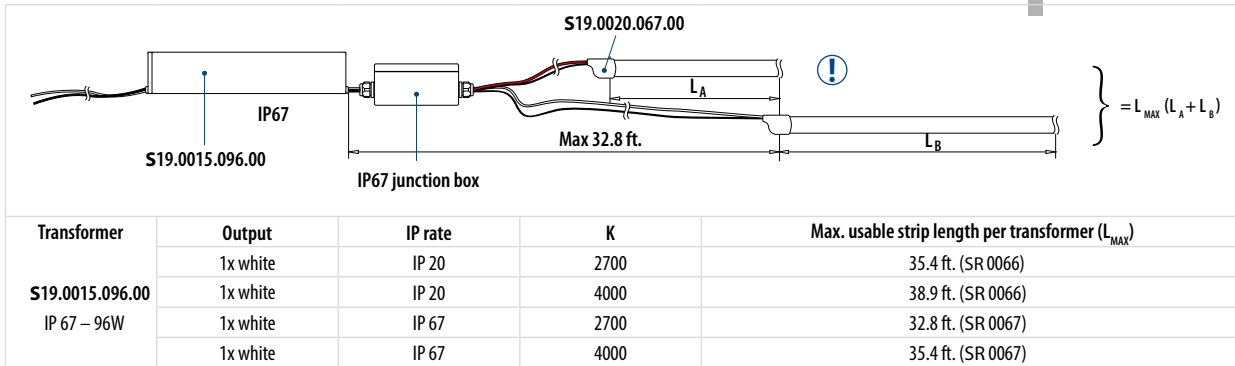
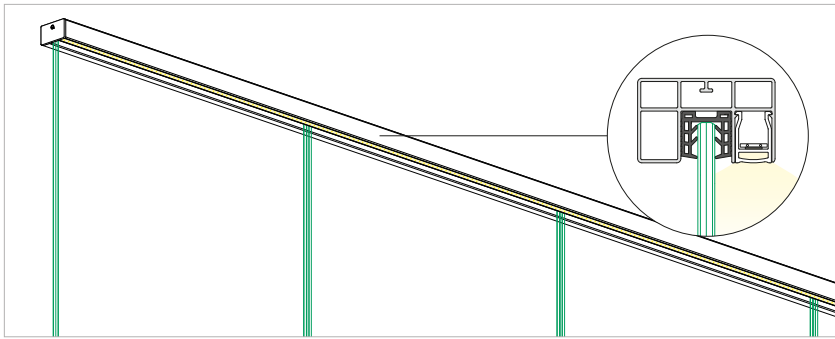
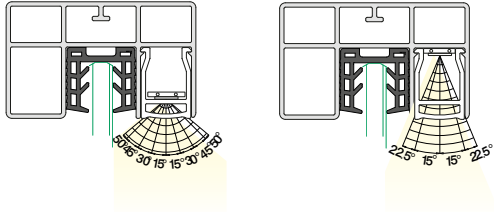


Modular Railing Systems



FEATURES

- Glass mounted Aluminum cap rail
- Continuous LED stream
- Handrail strips can be set in front of or behind the glass
- Transparent or frosted plastic lenses
- Modular system
- Easy installation
- Vandal resistant

Rectangular Light output options



Specifications overview Q-lights Linear Light LED strips

LED strips	IP	V	W	W/ft.	K	Color	lm	lm/ft.		LED/ft.	L (ft.)	L _{min} (inch)		
S41.0066.027.00	20	24	89	2.71	2700	warm white	8000	244	120	36.5	32.8	1.97	✓	60,000 h
S41.0066.040.00	20	24	81	2.47	4000	cool white	8500	259	120	36.5	32.8	1.97	✓	60,000 h
S41.0067.027.00	67	24	95.4	3.23	2700	warm white	10350	350	120	21.5	29.52	3.94	✓	50,000 h
S41.0067.040.00	67	24	80.1	2.71	4000	cool white	10800	366	120	21.5	29.52	3.94	✓	50,000 h

 IP...	Ingress Protection	 W/ft.	Nominal wattage per foot	 lm	Luminous flux	 LED/ft.	Number of LEDs per foot
 V	Nominal voltage	 K	Color temperature	 lm/ft.	Luminous flux per foot		Dimmable
 W	Nominal wattage	 Color	Light color		Beam angle		Life time



Modular Railing Systems

USE THE DROPDOWN MENU TO CREATE YOUR PART NUMBER HERE

Model	Finish	Application	Rail Type	Infill	Color Temp.	Voltage	Lens
IR Illuminated Rail	SSE Stainless steel effect	INT 304 Interior EXT 316 Exterior	CRL 2.56" x 1.57" Rectangle Cap Rail	GL Glass (provided by others)	27k 2700k 40k 4000k CU Requires longer leadtime++	D 120/277vac input 0-10vdimming	F Frosted Lens C Clear Lens

++ Other color temperatures and lumen outputs available

TYPE RAIL LENGTHS INTO SECTIONS BELOW

Rail Length1	Rail Length2	Rail Length3	Rail Length4	Rail Length5	Rail Length6	Rail Length7	Rail Length8	Rail Length9

Provide overall length of each handrail section.

The Smart Lighting Company
 1731 Kaiser Avenue
 Irvine, CA 92614
 949-346-3456

