

## Rectangle Aluminum Illuminated Handrail

### Application

Smartlights by Smart Railing is a Modular System for use in interior or exterior commercial and residential applications. The LED illuminated handrail or cap rail produces a continuous stream of light adding safety and atmosphere. The system is pre-wired with no visible cables. Simple to install, the OSRAM LED strips simply click into place. The 24v system uses IP67 LED's for outdoor applications. Dimmable power supplies make this ideal for darker interior applications such as theaters and concert halls. The system is UL listed.

### Railing

The Rectangle aluminum illuminated cap rail is a glass mounted rail system and allows the LED strips to be positioned in front of or behind the glass. Choose from 50° or 22.5° spread during installation. LED strips are covered by transparent or frosted lenses.

### LEDS

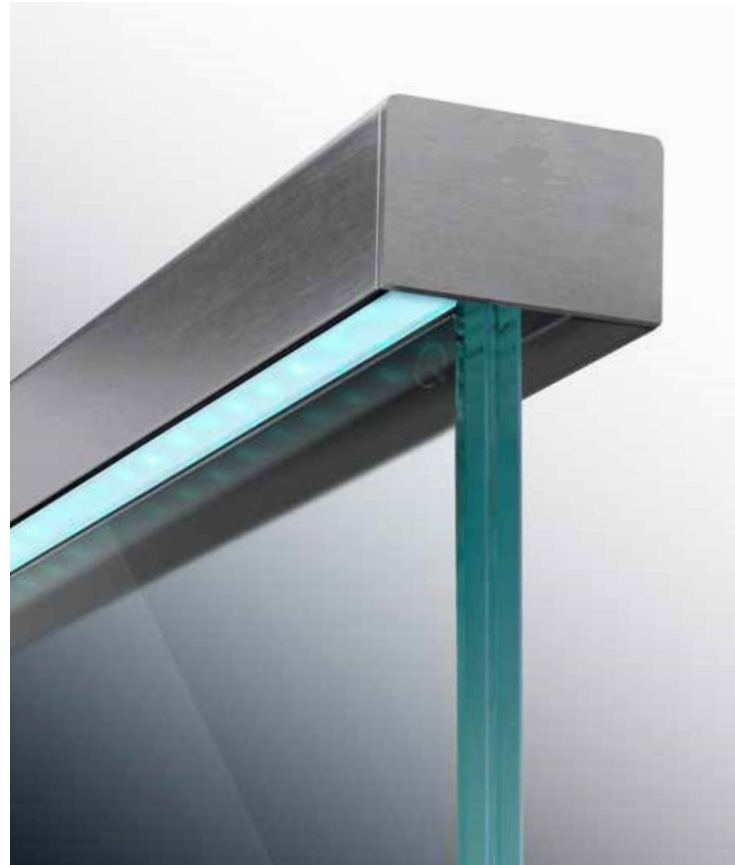
LED Strips are recessed into the underside of the handrail. The OSRAM LED Strips are rated up to 60,000 hours and produce up to 366 lumens at 2.71 watts per foot. Standard color temperatures in stock are 27k and 40k. Other color temperatures and lumen outputs may be ordered and require additional lead time.++

### Installation

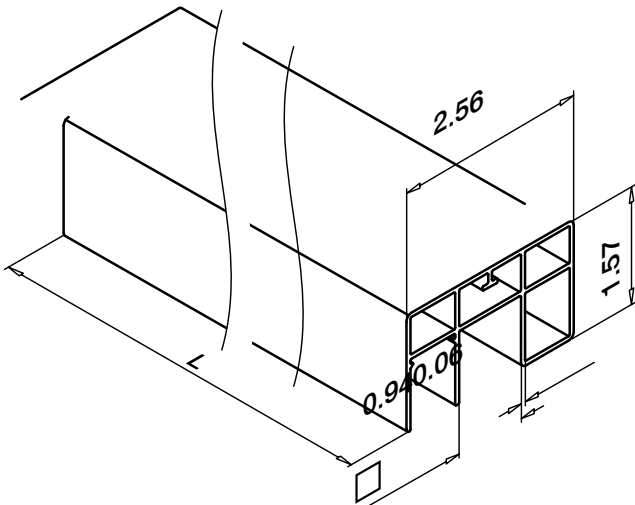
The Smartlights system is modular and designed for simple assembly and installation.

### Certifications

UL, cULus, ANSI, ADA



### Profiles



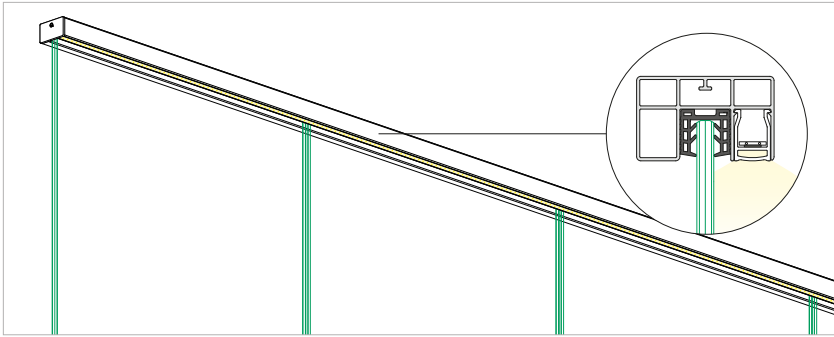
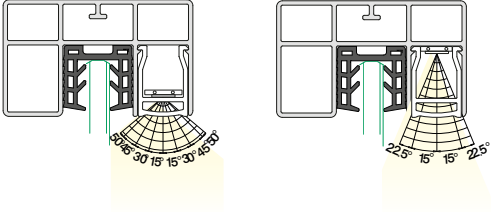


## Modular Railing Systems

### FEATURES

- Glass mounted Aluminum cap rail
- Continuous LED stream
- Handrail strips can be set in front of or behind the glass
- Transparent or frosted plastic lenses
- Modular system
- Easy installation
- Vandal resistant

Rectangular Light output options





Modular Railing Systems

CREATE YOUR PART NUMBER HERE

Model	Finish	Rail Type	Infill	Color Temp.	Voltage	Lens
IR Illuminated Rail	SSE Aluminum - Stainless steel effect	CRL 2.56" x 1.57" Rectangle Cap Rail	GL Glass (provided by others)	27k 2700k 30k 3000k 35k 3500k 40k 4000k CU Requires longer leadtime++	D 120/277vac input 0-10vdimming	F Frosted Lens C Clear Lens

++ Other color temperatures and lumen outputs available including RGBW, please contact factory.

RAIL LENGTHS SECTIONS BELOW

Rail Length <sup>1</sup>	Rail Length <sup>2</sup>	Rail Length <sup>3</sup>	Rail Length <sup>4</sup>	Rail Length <sup>5</sup>	Rail Length <sup>6</sup>	Rail Length <sup>7</sup>	Rail Length <sup>8</sup>	Rail Length <sup>9</sup>

Provide overall length of each handrail section.

The Smart Lighting Company  
 1731 Kaiser Avenue  
 Irvine, CA 92614  
 949-346-3456

