

Modular Railing Systems

Square Stainless Illuminated Handrail

Application

Smartlights by Smart Railing is a Modular System for use in interior or exterior commercial and residential applications. Perfect for a new or retrofit application. The LED illuminated handrail produces a continuous stream of light adding safety and atmosphere. All wiring is concealed. The LEDs are simple to install and click into place. The 24v or 48v system uses IP67 LED's for outdoor and IP20 LED's for indoor applications. Dimmable power supplies make this ideal for darker interior applications such as theaters and concert halls. The system is UL listed.

Railing

Smartlights Square is available in 304 or 316 stainless steel in 1.9" and 1.66" diameter. Depending on railing system, this can be wall mounted, post mounted or glass mounted. Choose from frosted or clear lens. Infill choices include cables, glass or bars. The railing provides a seamless look and is vandal resistant. Railing solutions require no welding and can be used on stairs, ramps balconies and more. We have both indoor and outdoor solutions.

The Round illuminated cap rail is wall or post mounted. Cable duct is integrated for the LED strips. Choose from a variety of handrail brackets and post tube adapters as well as transparent or frosted lenses. The circular handrail meets the ADAAG (Americans with Disability Act Accessibility Guidelines).

LEDs

LED Strips are recessed into the underside of the handrail. The OSRAM LED Strips are part of the 24v system, rated up to 60,000 hours and produce up to 366 lumens at 2.71 watts per foot. Standard color temperatures in stock are 27k and 40k.

We also offer a 48v system. Standard color temperatures in stock are 30k and 65k. Other color temperatures and lumen outputs may be ordered and require additional lead time.

++

24v Driver

Input voltage: 120/277vac

Output voltage: 24vdc

Wattage: 96w

Control: 0-10V dimming

Damp and Dry location rated

UL Class 2 output for safe operation

Input frequency: 50/60Hz

Installation

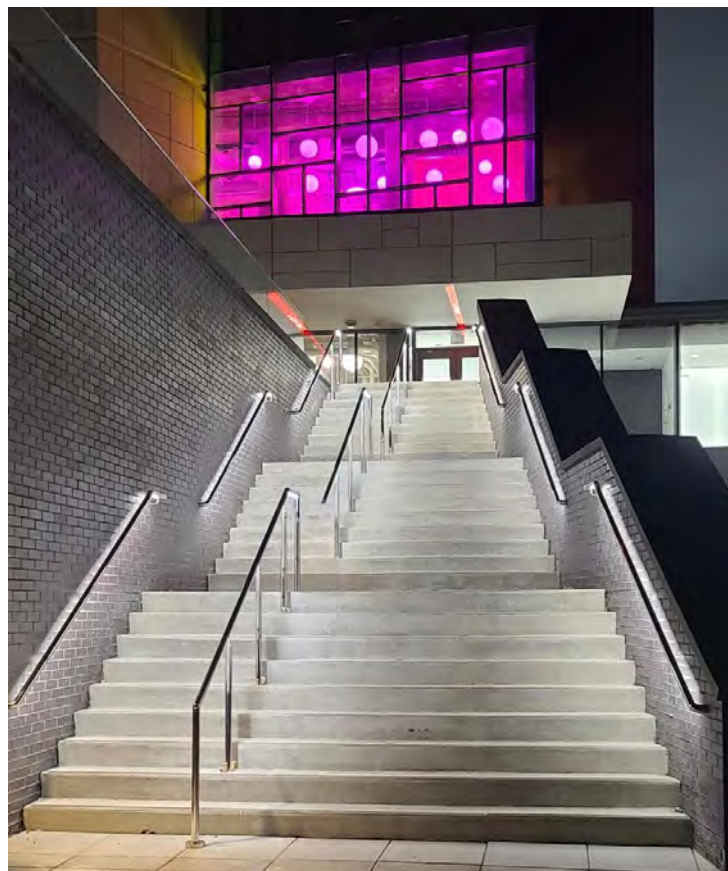
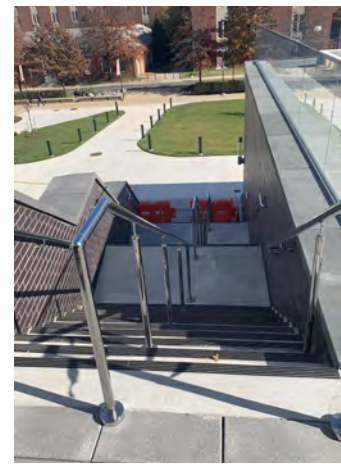
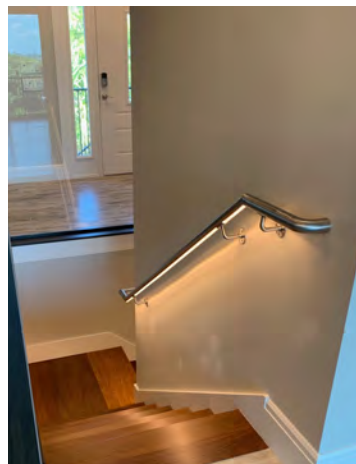
The Smartlights system is modular and designed for simple assembly and installation.

Certifications

UL, cULus, ANSI, ADA

How to Specify

The Smart railing systems are modular and each system is custom designed for your specific project requirements. Cap rails come in 16'-4" lengths and are cut in the field to ensure proper fit. We require drawings with dimensions and complete description of railing requirements to create the proper BOM for your project.



SQUARE ILLUMINATED HANDRAIL

Date:

Type:

Project:

Firm:

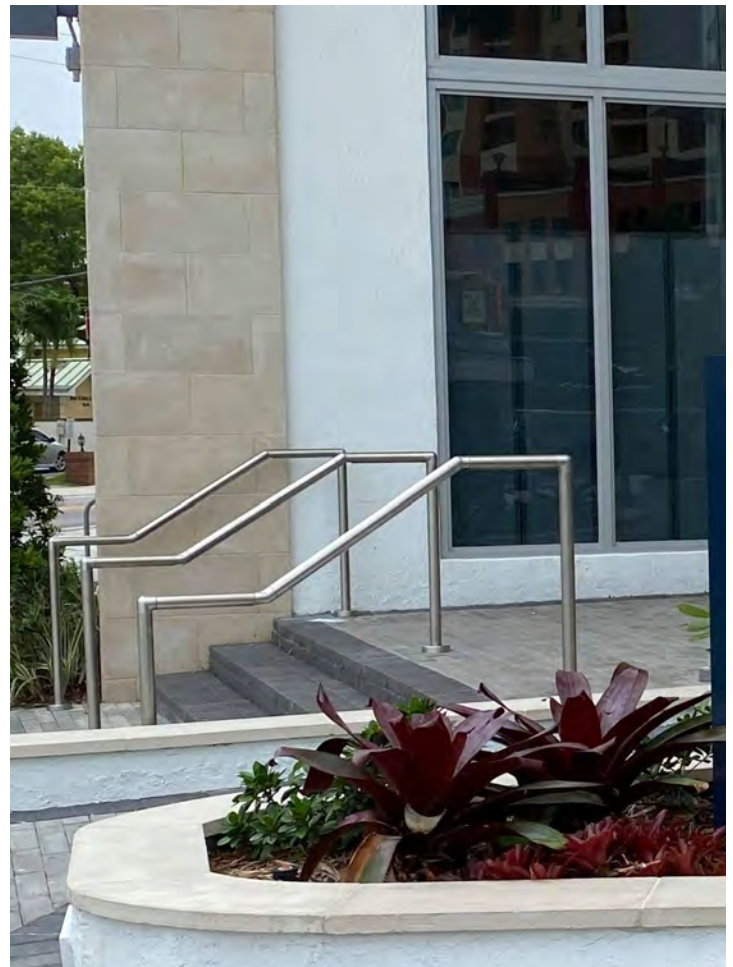
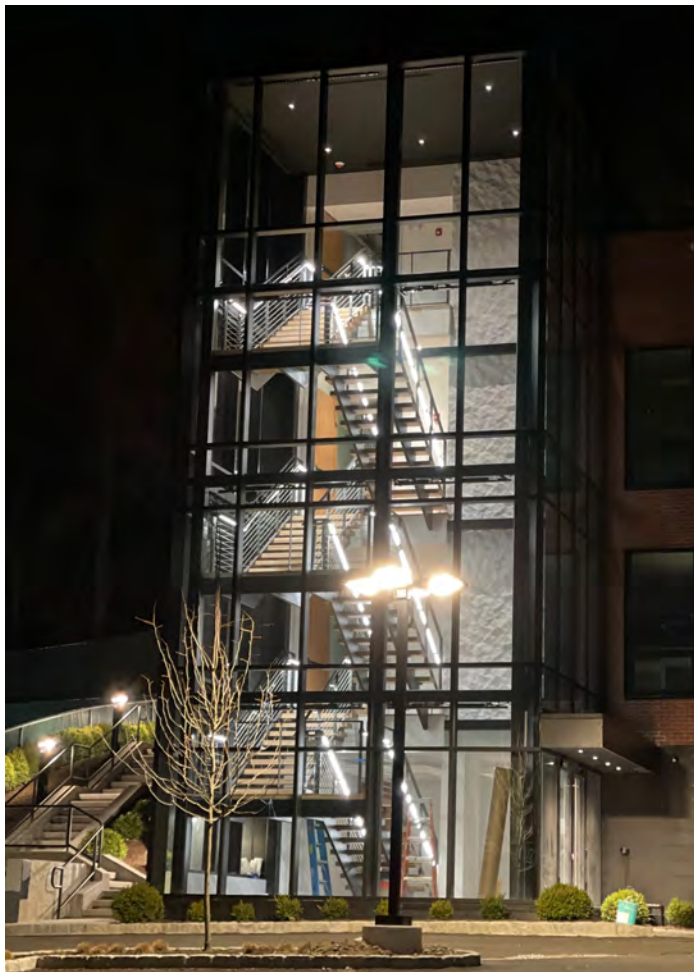
SPECIFYING FORM

CREATE YOUR RAILING

Ex. IS316-1.57-PM-40-S-F-24-N

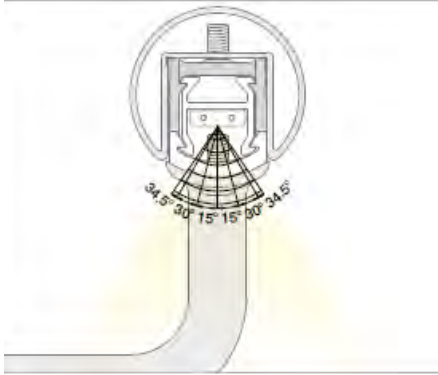
TYPE		DIAMETER		MOUNTING		CCT	
IIS316	Square 316 Stainless	1.57"	1.57"x1.57" diameter	PM	Post mounted	24v system	
IS304	Square 304 Stainless			PMC	Concrete embedded post	27	27
				WM	Wall mounted	40	40
				GM	Glass mounted	48v system	
						30	30
						65	65
BEAM		LENS		VOLTAGE		INFILL	
S	Symmetric 120°	F	Frosted	24	24v	N	None
		C	Clear	48	48v	C	Cable
						B	Bars
						G	Glass

* glass by others

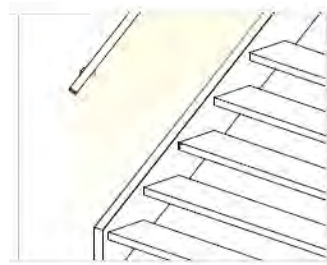
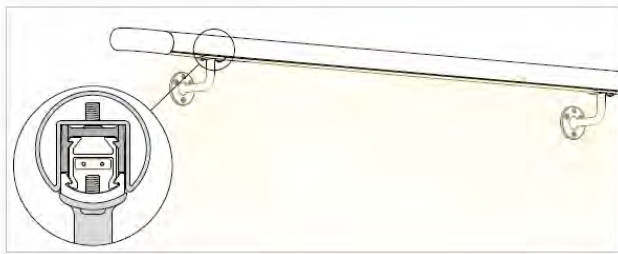
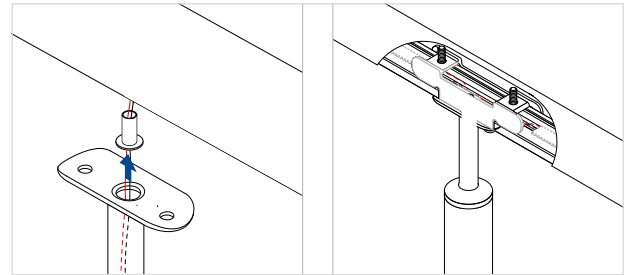
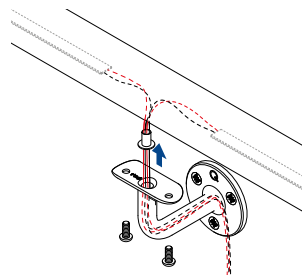


Modular Railing Systems

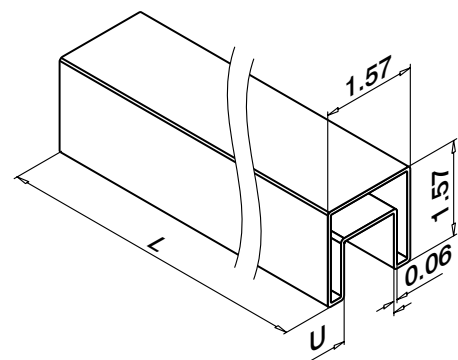
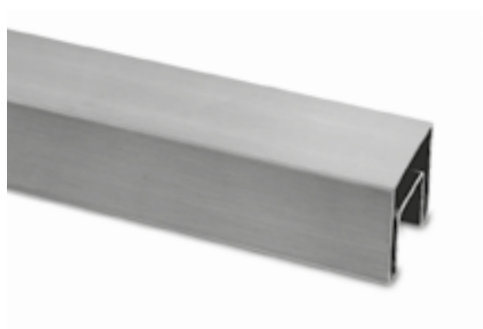
Symmetric Light output



Concealed Wires



Profiles



Handrail Mounting and Bracket options



Adjustable Post Mount

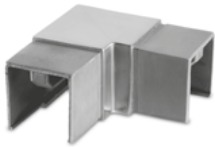


Fixed Post Mount



Post mount bracket

Corner and Stairway options



90° Connectors



Adjustable Connectors for Stairs



Tube to Cap Rail Connectors

End and Return options



End Fitting



End Cap

Infill options



Bar Infill



Cable Infill



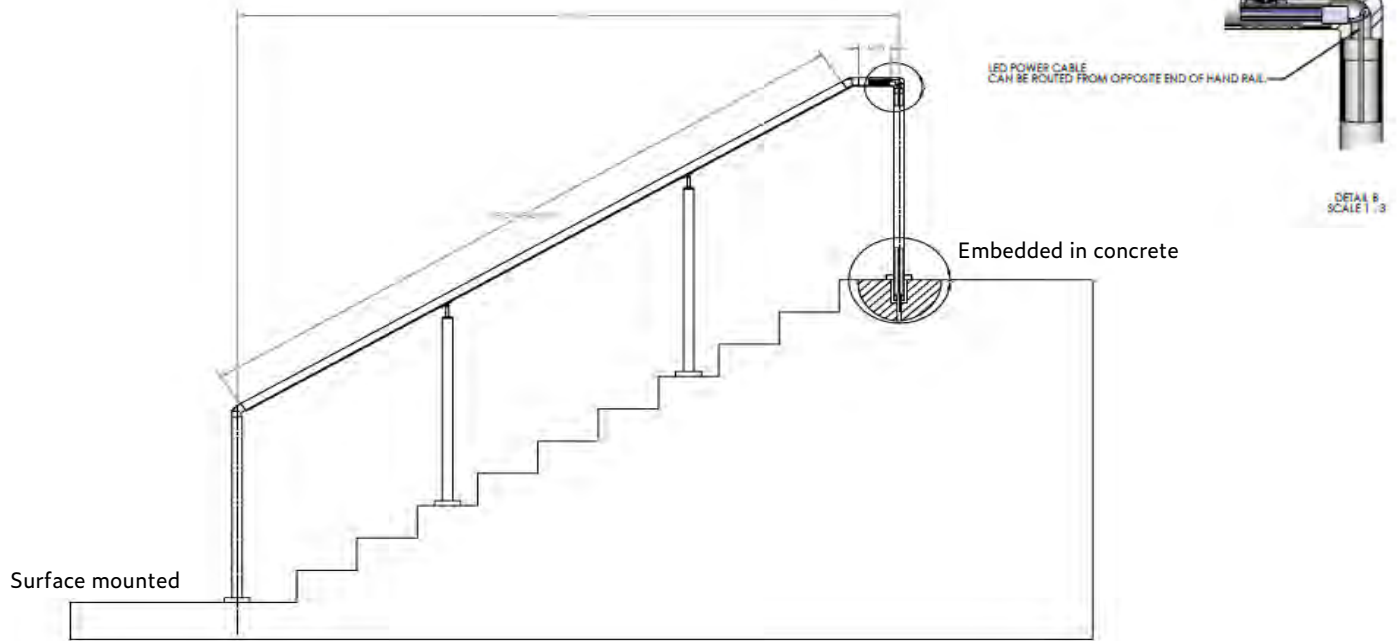
Glass Infill Clamp



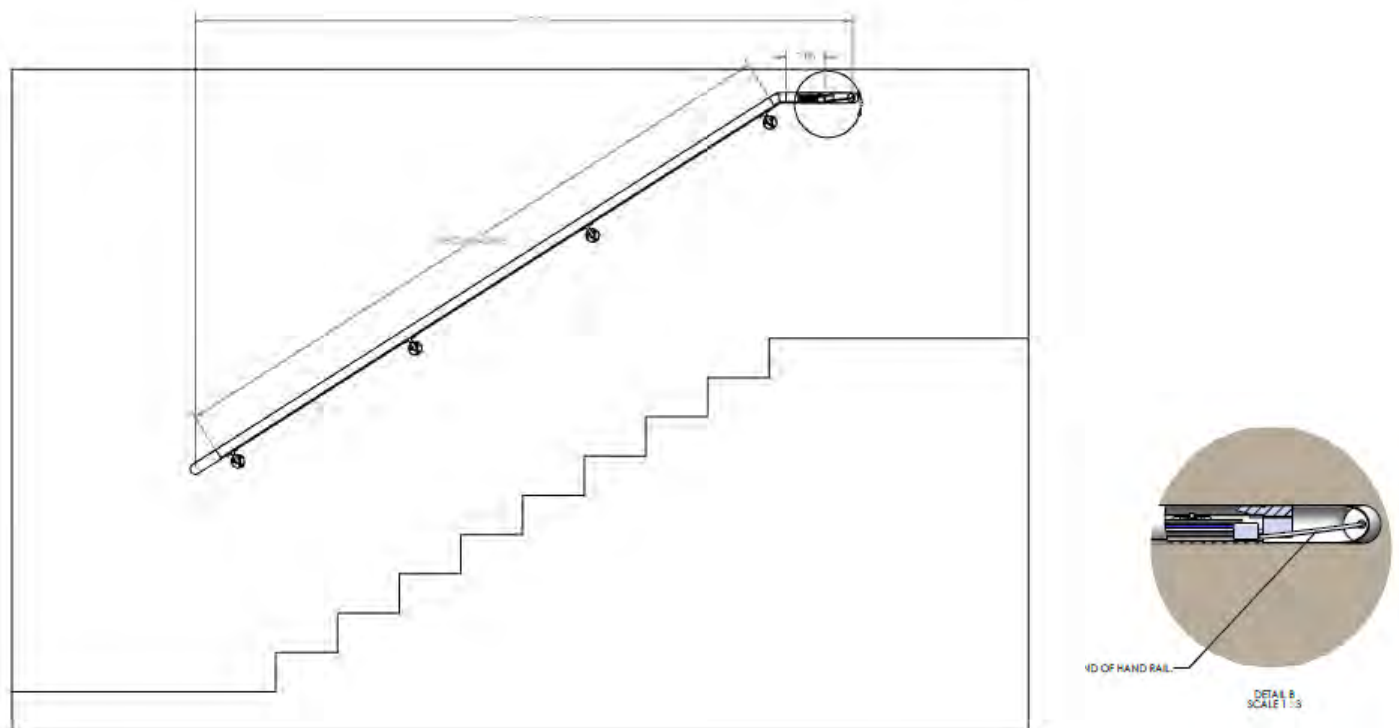
Glass Infill Clamp

Modular Railing Systems

POST MOUNTED STAIRWAY EXAMPLE



WALL MOUNTED STAIRWAY EXAMPLE



ILLUMINATED HANDRAIL

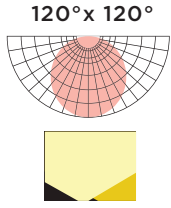
Date:

Type:

Project:

Firm:

SPECIFICATIONS



24 VOLT

2700k

4100k

48 VOLT

3000k

6500k

LED DATA

24 VOLT

Location	Color Temp	IP	Voltage	Watts/foot	Lumens/foot	Beam Angle	LEDs/ft	L(ft)	Lifetime
Indoor	2700	20	24	2.71	244	120	36.5	32.8	60,000 h
Indoor	4000	20	24	2.47	259	120	36.5	32.8	60,000 h
Outdoor	2700	67	24	3.23	350	120	21.5	29.52	50,000 h
Outdoor	4000	67	24	2.71	355	120	21.5	29.52	50,000 h

48 VOLT

Location	Color Temp	IP	Voltage	Watts/foot	Lumens/foot	Beam Angle	LEDs/ft	L(ft)	Lifetime
Indoor	3000	20	48	1.19	129	120	25.6	98.4	50,000 h
Indoor	6500	20	48	1.19	133	120	25.6	98.4	50,000 h
Outdoor	3000	67	48	1.19	119	120	25.6	98.4	50,000 h
Outdoor	6500	67	48	1.19	123	120	25.6	98.4	50,000 h