

Affordable architectural lighting

that regularly exceeds the performance & lifetimes of more expensive brands.

The Smart Lighting Company offers affordable, high-quality RGBW and white architectural lighting. Built with industry-leading Nichia LEDs, custom optics, superior thermal systems, and seamless integration with DMX controllers, our fixtures rival pricier brands without compromising quality. Professionals choose us for unmatched value, exceptional service, and reliable illumination.



The unparalleled quality of our fixtures is a result of 30+ years of pioneering LED innovation, multiple patents, and 23+ years of manufacturing excellence from our exclusive Taiwanese partner.

HB18 Series

Compact form factor
Removable end caps for
continuous lensing
Static, RGBW
4w/ft., 180lm/ft.



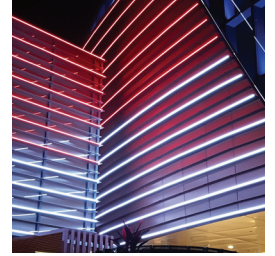
HB30 Series

Compact form, integral
driver enables longer
runs, illuminates over 15'
Static, RGB, RGBW
4.5-7w/ft. 217-700lm/ft.



HB30PD Series

Direct view, with an even
vivid glow. One-piece
polycarbonate housing
Addressable to 4"
Static, RGB, RGBW
6w/ft



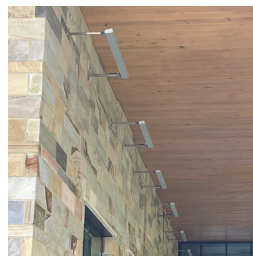
HB40HP Series

Compact form factor,
illuminates over 45'
Integral driver enables
longer runs
Static, RGB, RGBW
4.5-7w/ft. 750-975lm/ft



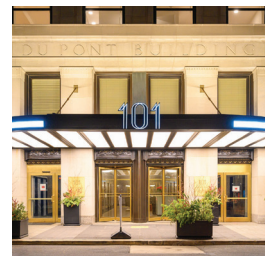
HB40SP Series

Exterior with adjustable
optical beam angle,
illuminates over 45'
Static, RGB, RGBW
750-975lm/ft - 100-277v



HB50 Series

Optics for graze, wall
wash & general
illumination over 80'
Static, RGB, RGBW
780-1400lm/ft.



HB30i Series

Compact form factor
Integral 100/277vac driver
enables longer runs
Static, RGB, RGBW
4.5-7w/ft. 217-700lm/ft.



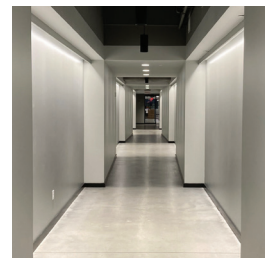
JB36 Series

Magnetically connected
Fluid glow, uniform with
& high intensity
Accent, cove, under
cabinet
420lm/ft. - 24vdc



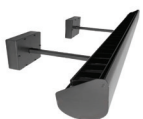
SB Series

Seamless interior
cove, accent, graze &
wall-wash illumination
up to 12'
380-620lm/ft. - 24vdc



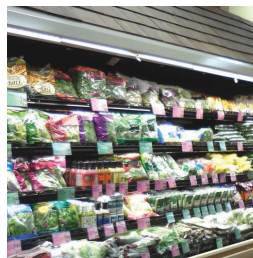
Sign & Facade

Extrusions for all fixtures—
direct, indirect, ground, &
post mounting
Extended arms up to 36"



COOLER Series

High CRI & R9 values
for high quality, even
illumination
DOE Gateway Freezer
case study 2006/2008
DLC Listed



HANDRAIL Series

Modular system
304/316 stainless steel
round, square &
rectangle
Wall, post, glass mount
Frosted or clear lens
No welding, easy install

