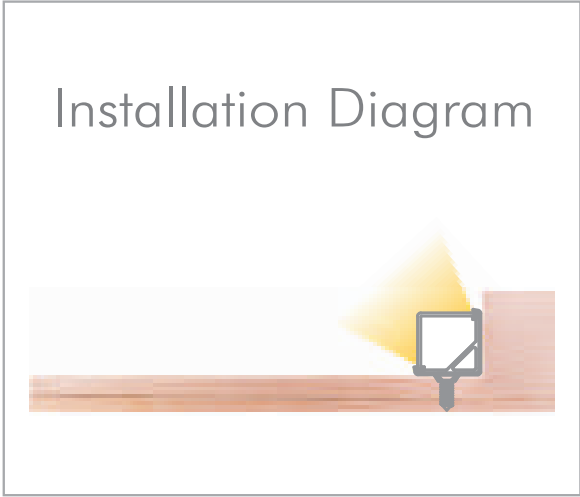


Corner Mounting Channel

Aluminum Channel for Flexible LED Strip

**CM-
6363-S**



Specifications

- Material: Anodized Aluminum 6063
- Color: Silver / Black / White
- Cover: Regular PC diffuser (milky / transparent / black)
- Width*Height: 16*16mm [0.63*0.63in.]
- Max. Length: Profile 3M [9.84ft.], cover 3M [9.84ft.]
- End cap: 2pcs/unit (1pc with hole, 1pc without hole)
- Clip/Screw: 2pcs/M [2pcs/39.4in.]
- Match Strip Width: 8/10mm [0.31/0.39in.]
- Linear LED Density@milky cover: ≥ 120LED/M/Row [36LED/ft.]
- Light Output Rate of Finished Product: 50-60%
- Length of Finished Product: Strip Length+13mm [0.51in.]



Part Number

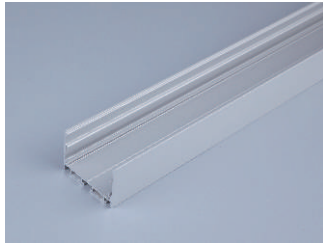
MODEL	CHANNEL FINISH	LENS	QUANTITY
CM 6363-S Corner Mount Channel	WH White SI Silver BK Black	C Clear Lens F Frosted Lens M Milky Lens	39 Available in 1 meter (39") increments

Corner Mounting Channel

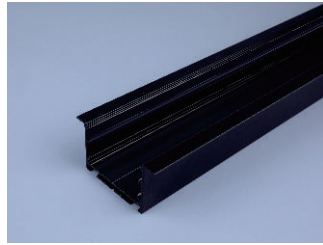
Aluminum Channel for Flexible LED Strip

CM-
6363-S

Aluminum Options



Silver

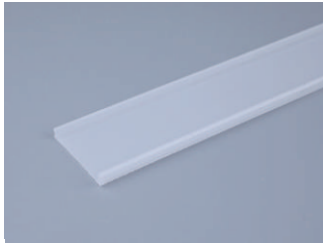


Black

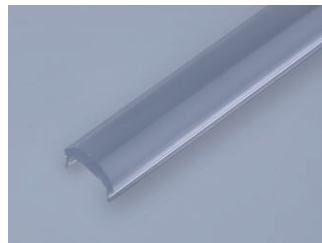


White

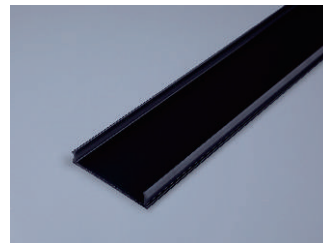
Diffusion PC Cover Options



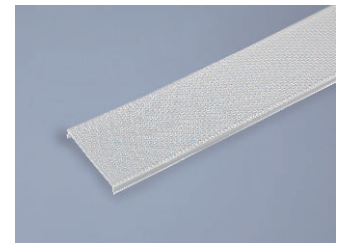
Milky Transmission:
83%For Dot-free



Transparent Transmission:
93%For High transmittance



Black Transmission:
60%For Decoration



Prismatic Transmission: 83%
For Anti-glare (UGR < 19 optional)

Corner Mounting Channel

Compatible LED Strips

CM-
6363-S

STATIC	RGBW	TW	LED STRIP #	PRODUCT WIDTH	IP rating
✓			ULHE-9519S	0.32" (8mm)	IP20
✓			ULHE-9522S	0.32" (8mm)	IP20
✓			HEFC-9687S	0.32" (8mm)	IP20
✓			OSMV-FE62S	0.32" (8mm)	IP20
✓			TDFP-414S	0.32" (8mm)	IP54
✓			ULPS-9033S	0.39" (10mm)	IP20
✓			HEFC-9677S	0.39" (10mm)	IP20
✓			ULHE-9561S	0.39" (10mm)	IP20
✓			HEP-L624S	0.39" (10mm)	IP20
	✓		CMLP-9688S	0.39" (10mm)	IP20
		✓	TUNE-LN28S	0.39" (10mm)	IP20
		✓	HEFC-9678S	0.39" (10mm)	IP20