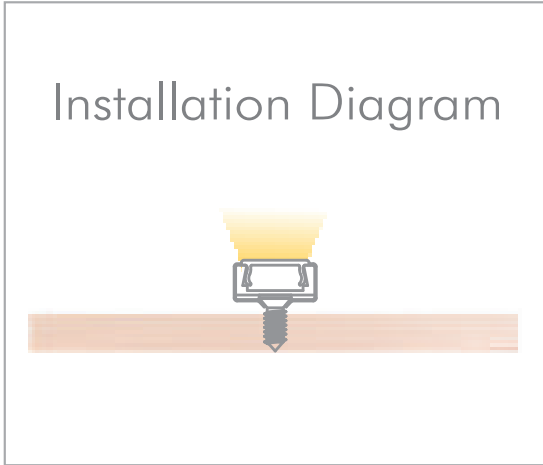


Regular Surface Mounting Channel

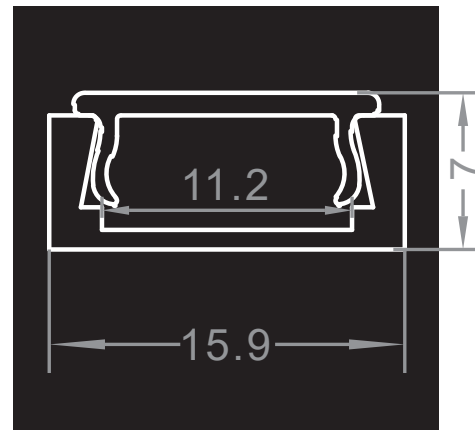
Aluminum Channel for Flexible LED Strip

RSM-5928



Specifications

- Material: Anodized Aluminum 6063
- Color: Silver / Black / White
- Cover: Regular PC diffuser (milky / transparent / black)
- Width*Height: 15.9*7mm [0.59*0.28in.]
- Max. Length: Profile 3M [9.84ft.], cover 20M[65.6ft.]
- End cap: 2pcs/unit (1 pc with hole, 1 pc without hole)
- Clip/Screw: 2pcs/M [2pcs/39.4in.]
- Match Strip Width: 8/10mm [0.31/0.39in.]
- Linear LED Density@milky cover: $\geq 240\text{LED/M/Row}$ [73LED/ft.]
- Light Output Rate of Finished Product: 50-60%
- Length of Finished Product: Strip Length+13mm [0.51in.]



Part Number

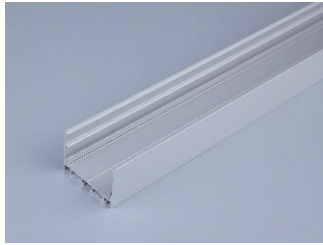
MODEL	CHANNEL FINISH	LENS	QUANTITY
RSM-5928 Regular Surface Mount Channel	WH White SI Silver BK Black	C Clear Lens F Frosted Lens M Milky Lens	39 Available in 1 meter (39") increments

Regular Surface Mounting Channel

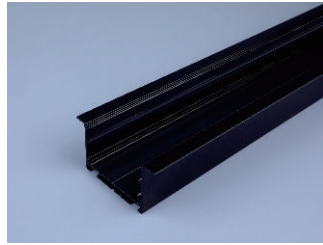
Aluminum Channel for Flexible LED Strip

RSM-
5928

Aluminum Options



Silver

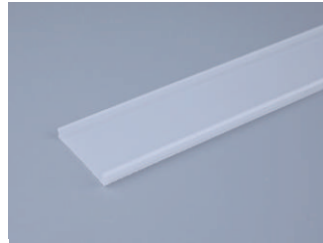


Black

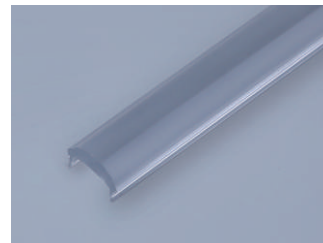


White

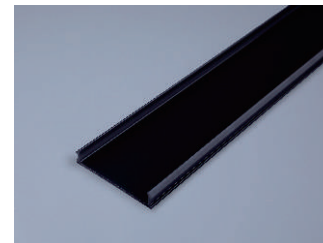
Diffusion PC Cover Options



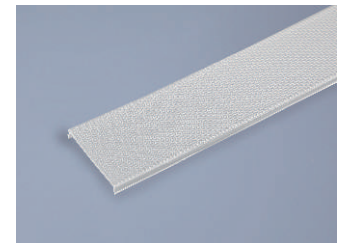
Milky Transmission:
83%For Dot-free



Transparent Transmission:
93%For High transmittance



Black Transmission:
60%For Decoration



Prismatic Transmission: 83%
For Anti-glare (UGR < 19 optional)

Regular Surface Mounting Channel

Compatible LED Strips

RSM-
5928

STATIC	RGBW	TW	LED STRIP #	PRODUCT WIDTH	IP rating
✓			ULHE-9519S	0.32" (8mm)	IP20
✓			ULHE-9522S	0.32" (8mm)	IP20
✓			HEFC-9687S	0.32" (8mm)	IP20
✓			OSMV-FE62S	0.32" (8mm)	IP20
✓			TDFP-414S	0.32" (8mm)	IP54
✓			ULPS-9033S	0.39" (10mm)	IP20
✓			HEFC-9677S	0.39" (10mm)	IP20
✓			ULHE-9561S	0.39" (10mm)	IP20
✓			HEP-L624S	0.39" (10mm)	IP20
	✓		CMLP-9688S	0.39" (10mm)	IP20
		✓	TUNE-LN28S	0.39" (10mm)	IP20
		✓	HEFC-9678S	0.39" (10mm)	IP20
	✓		PCS-FE70S	0.39" (10mm)	IP67
✓			OSMV-FE62S	0.39" (10mm)	IP65
			SRLT-FK76S	0.39" (10mm)	IP67 +
✓			HEHD-4LD97S	0.39" (10mm)	IP67 +
✓			HEHD-8LD97S	0.39" (10mm)	IP67 +
✓			HEHD-15LD97S	0.39" (10mm)	IP67 +
✓			TDFP-468S	0.39" (10mm)	IP67 +
✓			TDFP-172S	0.39" (10mm)	IP67 +
✓			ULHE-9519S	0.39" (10mm)	IP65/ IP67plus/ IP68
✓			ULHE-9522S	0.39" (10mm)	IP65/ IP67plus/ IP68
✓			HEFC-9687S	0.39" (10mm)	IP65/ IP67plus/ IP68