

The SB Series Refrigeration Bar Advantage

- UL Listed
- Certified to CSA Standard C22.2 No.9
- LED Life of 50k or 100k hours, under normal operating conditions
- Low wattage, low heat, low voltage (24VDC Operation)
- Provide consistent and uniform illumination
- Emits no UV or infrared light and does not contain lead, mercury or glass.
- Eco-friendly handling and disposal when required
- Available in a wide variety of warm or cool color temperatures
- Available in 120° beam angles.
- Suitable for damp locations
- Simple user friendly installation
- Top quality mounting hardware
- Zero warm-up time and no reduction to lamp life in normal operating conditions

NOTE: WATERPROOF CONNECTORS AND WIRENUTS WITH SILICONE REQUIRED WHEN USING IN WASHDOWN LOCATIONS

LINEAR LED SERIES

Horizontal Refrigeration Illumination Systems



For more information, please visit www.thesmartlightingcompany.com or call 949.346.3456
Copyright 2016 The Smart Lighting Company All rights reserved

LED LIGHT BAR

MODEL NUMBER	VOLTAGE	VIEW ANGLE	LENGTH	WATTS/FIXTURE	LEDS	SYSTEM WATTAGE	LED COLOR
SB8-12"-XXK-120-24V-X	24VDC	120°	12"	4.35	8	3.96w	28k, 35k, 41k, 50k
SB8-24"-XXK-120-24V-X			24"	8.7	16	7.92w	28k, 35k, 41k, 50k
SB8-36"-XXK-120-24V-X			36"	13.05	24	11.87w	28k, 35k, 41k, 50k
SB8-46"-XXK-120-24V-X			46"	16.68	30	15.17w	28k, 35k, 41k, 50k
SB8-66"-XXK-120-24V-X			60"	23.93	44	21.77w	28k, 35k, 41k, 50k

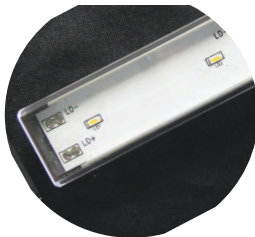
X=W/L (wire lead) or J (jumper)

XXK=CCT

MODEL NUMBER	VOLTAGE	VIEW ANGLE	LENGTH	WATTS/FIXTURE	LEDS	SYSTEM WATTAGE	LED COLOR
SB12w-12"-XXK-24V-X	24VDC	120°	12"	7	12	6.33w	28k, 35k, 41k, 50k
SB12w-24"-XXK-24V-X			24"	14	24	12.66w	28k, 35k, 41k, 50k
SB12w-36"-XXK-24V-X			36"	21	36	18.99w	28k, 35k, 41k, 50k
SB12w-46"-XXK-24V-X			46"	28	46	24.26w	28k, 35k, 41k, 50k
SB12w-66"-XXK-24V-X			60"	38.5	66	34.82w	28k, 35k, 41k, 50k

X=W/L (wire lead) or J (jumper)

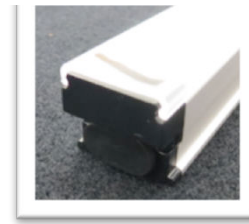
XXK=CCT



SB LED



Prewired joint connector



Preinstalled End Cap



SB 8 1/2W LED Bar



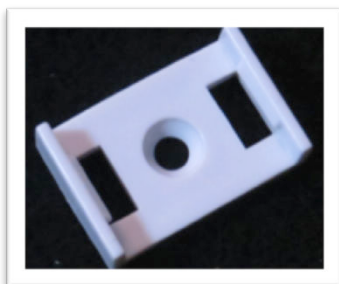
SB 12 LED Bar

Accessories

Part Numbers	Description
SB Flat Clip	Flat Clip
SB Roto Clip STD	Roto Clip
SB End Cap	End Cap
SB Magnetic Clip	Flat Magnetic Clip



End Cap
*Pre-installed onto product



Flat Clip



Roto Clip



Flat Magnetic Clip



LED Power Supply

Part Numbers	Description	Dimension	Input Voltage	Input Power	Output Voltage	Output Current
LV100-24N-UNV-1	100W ELECTRONIC Power Supply	8.85"x1.7"x1.18"	120/277	110w	24	4.17a
LV80-24N-UNV-1	80W ELECTRONIC Power Supply	8.85"x1.7"x1.18"	120/277	93w	24	3.30a



100W Power Supply



80W Power Supply

PREPARE ELECTRICAL WIRING**Electrical Requirements**

- This lighting system is supplied with an appropriate power supply driver unit; this appliance unit must be supplied with 120V, 60Hz. and connected to an individual properly grounded branch circuit, protected by a 15 or 20 Amp circuit breaker or time delay fuse. The SB LED Light Bar is a CLASS 2, 24VDC low voltage luminary and must be used with an appropriate power supply driver unit. Failure to connect this lighting system correctly will violate all warranty claims.
- Wiring must be 2 wires with ground and rated for 75°C (176°F).

NOTE: Consult local building codes and guidelines on selecting wires. Wires must be UL Listed.

Grounding Instructions-Cable Direct

This lighting system must be connected to a grounded metal, permanent wiring system, or an equipment grounding conductor must be run with the circuit conductors and be connected to the equipment grounding terminal.

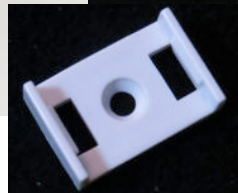


SB Horizontal INSTALLATION



Flat Clip

Flat Magnetic
Clip



Roto Clip



CAUTION:

The LED-Power Horizontal Refrigeration SB BAR LED Luminary **MUST** be installed with the LED POWER SUPPLY specified by TSLC for this luminary.

REMOVE Existing Fluorescent Lighting – Prepare for Mounting Light Fixture Mounting Clips

- Remove product from the the case, if obstructing install, and store appropriately.
- Lock out and tag out the circuit breaker for the lighting circuit of the case where the LED light fixtures are being installed.
- Turn the light switch to “off”.
- Remove appropriate front panels in order to access the electrical raceway and remove raceway cover.
- Use a Voltmeter and check that there is no voltage at the ballasts.
- Remove lenses covering the fluorescent tubes.
- Remove the fluorescent tubes.
- Remove the tombstones and any mounting clips and brackets. When removing the tombstones, do so by cutting the wires as close to the tombstones as possible.
- Remove all wires from the ballast but leave only one side of the existing fluorescent ballast wires for connection to the LED lighting fixtures.
- Use an appropriate size drill bit to remove screws or an appropriate tool to remove the fluorescent clips.
- If necessary, use an appropriate size drill bit or appropriate tool to remove the rivets or screws holding the tombstone mounting clip in place.
- Remove Ballast from the electrical raceway.
- Mount LED Power SB Bar light fixture using either flat clip or roto clip specifically designed for the light fixture to mount onto the existing casing or “Eye Brow”.

MOUNTING LIGHT FIXTURE

FOR YOUR SAFETY

Read and observe all CAUTIONS and WARNINGS shown throughout these instructions. While performing installation described, gloves, safety glasses or goggles should be worn.



SB Horizontal INSTALLATION

Mounting Power Supply in the Electric Raceway



Screw in Flat Metal Clip or
Roto Clip onto "Eye Brow"



Mounting SB Light Bar onto Canopy casing
using Flat or Roto Clip to secure in place



NOTE: WATERPROOF CONNECTORS AND WIRENUTS WITH SILICONE REQUIRED WHEN USING IN WASHDOWN LOCATIONS

MOUNTING LIGHT FIXTURE & POWER SUPPLY

FOR YOUR SAFETY

Read and observe all CAUTIONS and WARNINGS shown throughout these instructions. While performing installation described, gloves, safety glasses or goggles should be worn.



For more information, please visit www.thesmartlightingcompany.com or call 949.346.3456
Copyright 2016 The Smart Lighting Company All rights reserved

**Notes Applicable Unless Otherwise Specified
BEFORE YOU BEGIN**

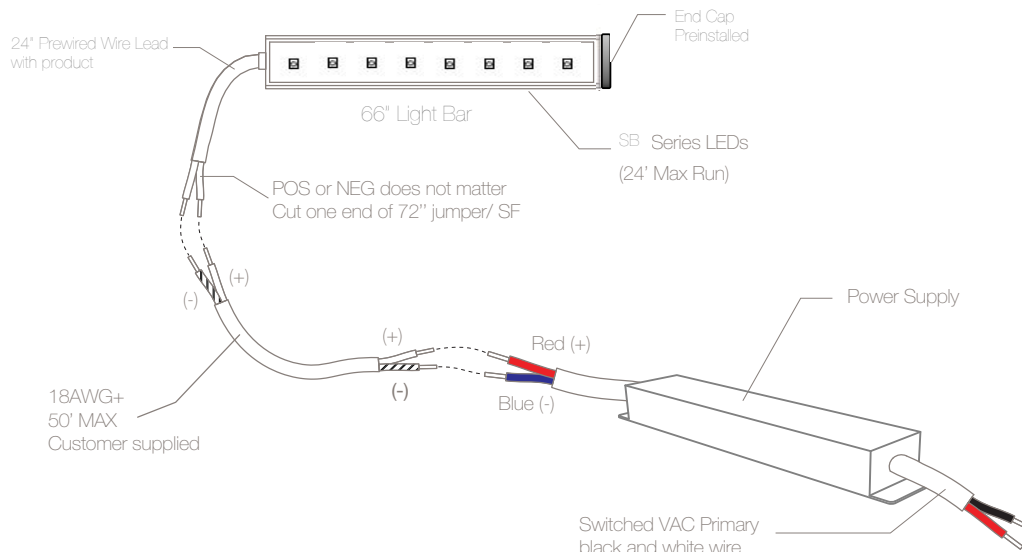
Read these instructions completely and carefully.

**WARNING: TO REDUCE THE RISK OF FIRE, ELECTRICAL SHOCK OR INJURY,
OBSERVE THE FOLLOWING:**

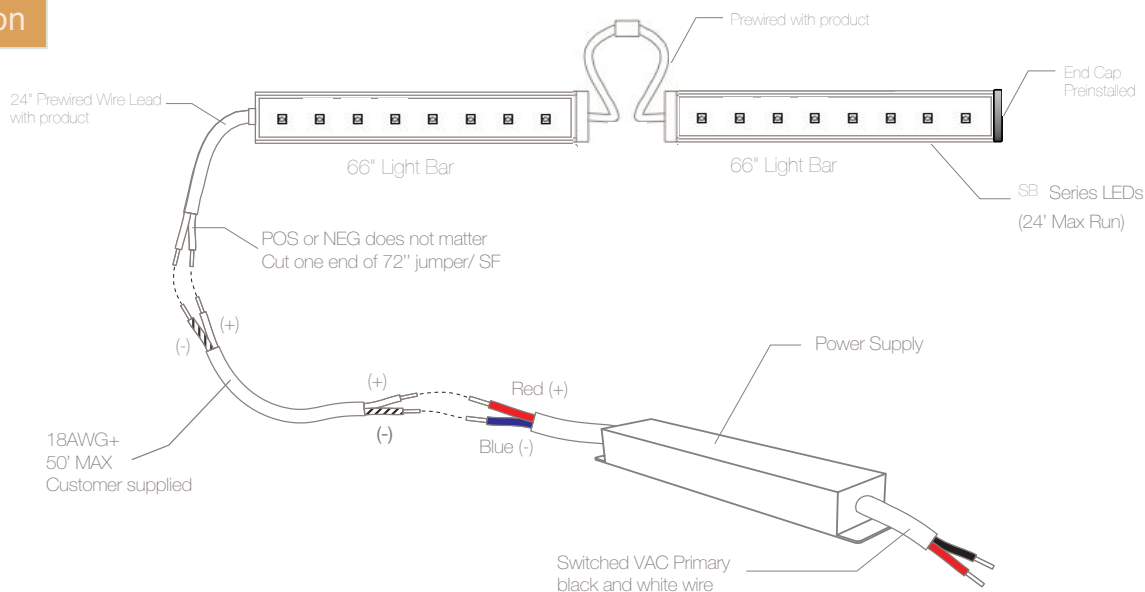
- A.** Use these fixtures only in the manner intended by the manufacturer. If you have any questions, contact the manufacturer.
- B.** Before servicing or cleaning unit, switch power off at the service panel and follow appropriate lock out/tag out safety procedures.

SB Horizontal INSTALLATION

6 Feet Installation



12 Feet Installation



SB SERIES WIRING DIAGRAM



FOR YOUR SAFETY

Read and observe all CAUTIONS and WARNINGS shown throughout these instructions. While performing installation described, gloves, safety glasses or goggles should be worn.



For more information, please visit www.thesmartlightingcompany.com or call 949.346.3456

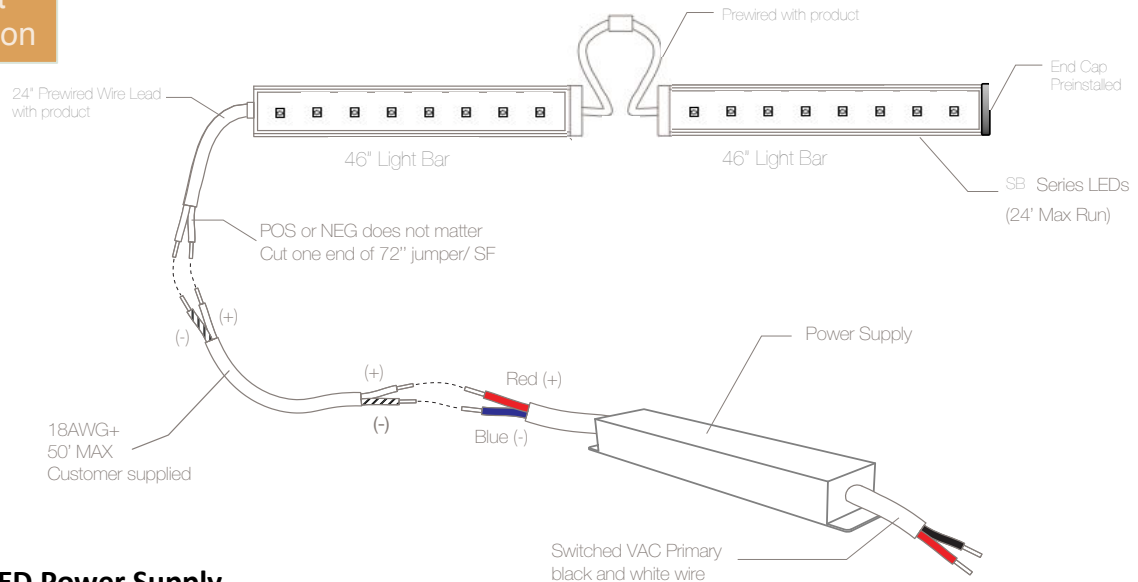
Copyright 2016 The Smart Lighting Company All rights reserved

CAUTION

The SB BAR LED luminary MUST be installed with the LED POWER SUPPLY specified by TSLC for this luminary.

SB Horizontal INSTALLATION

8 Feet Installation



Connect LED Power Supply

- Mount the LED power supply in the electrical raceway near where the previous fluorescent ballast was located.
- Power supply has 120V 50/60HZ input and 24V DC output.
- Using the appropriate wiring diagram connect the original load and neutral wires to the LED power supply input wires (black and white wire) using approved connection method.
- Install mounting clips for the LED Luminary into place where previous fluorescent tube was, with wires exiting the side of the luminary. Fasten and snap each luminary to the mounting clip.
- Connect the LED Luminary output wires to the wires that previously went to the fluorescent fixture, using approved connectors for low temperature usage.

Note: Our LED light fixtures are polarity sensitive.

- Additional conductors may be needed to connect the power supply to the existing wiring in the raceway or other section. Use conductors of proper size and rating as per local and national codes.
- The LED power supply enclosure case includes a terminal for grounding the incoming 120V 50/60HZ ground wire. Attach LED power supply to ground point in the refrigerated case either directly with a screw, or by using a green wire to attach to a remote ground point.
- Connect remaining wires by following the wiring diagram provided from the LED Luminary.
- Double check your wiring methods and be sure that all wires are properly connected and connected with suitable connectors.
- Remove the lock out tag from the circuit breaker for the lighting circuit and turn the breakers back on.
- Turn the lights back on to the case and inspect all lights to ensure that they are functioning properly.
- Reinstall all access panels and return the case to its original appearance prior to starting this process.

SB SERIES WIRING DIAGRAM (cont.)



FOR YOUR SAFETY

Read and observe all CAUTIONS and WARNINGS shown throughout these instructions. While performing installation described, gloves, safety glasses or goggles should be worn.

